

VALICON



REPUBLIC OF SLOVENIA  
MINISTRY OF AGRICULTURE,  
FORESTRY AND FOOD

EFSA FOCAL POINT



# Public Opinion Survey on food safety and on visibility of European Food Safety Authority in Slovenia

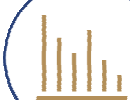
## Survey Report

**Commissioned by:** MAFF, Administration for Food Safety, Veterinary Sector and Plant Protection

**Prepared by:** Valicon d.o.o.

**Project funded by European Union**

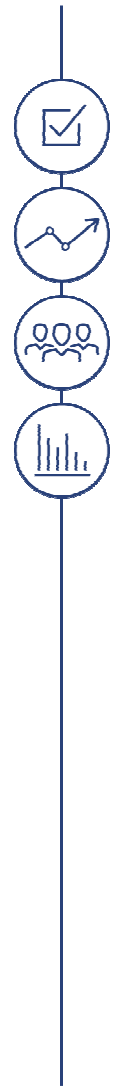
**December 2020**



# Contents

1. Survey definition	2
2. Summary and findings	4
3. Sample description	6
4. SURVEY RESULTS	9
4.1. Food safety perception	10
4.2. Food safety concerns	16
4.3. Perception of genetically modified food	19
4.4. Perception of food containing nanoingredients	22
4.5. Perception of food obtained from cloned animals	25
4.6. Perception of food obtained from insects	28
4.7. Visibility of European Food Safety Authority	30
4.8. Food Safety Information	32
4.9. Perception of contribution of institutions to food safety	37
5. ANNEXES	41
5.1. Baseline statistics	42
5.2. Questionnaire	75

# 1. Survey Definition



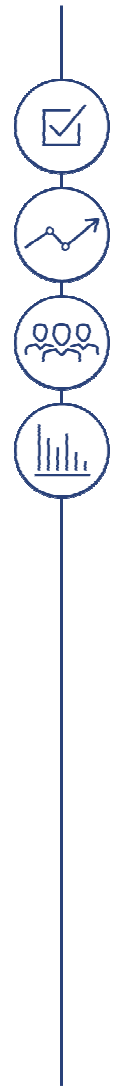
# Survey Definition

<b>Survey Method</b>	<p>Computer Assisted Web Interviewing (CAWI) of the JazVem Web Panel members</p> <p>A Web Panel is a group of pre-selected respondents, who are ready to cooperate in web surveys. The JazVem Web Panel comprises approximately 20,000 respondents, who are dispersed per socio-demographic characteristics in such a way that sample representativeness of the general population is guaranteed.</p>
<b>Data collection period</b>	26 through 30 November 2020
<b>Sample size</b>	n=721
<b>Sample and target group</b>	<p>General public aged 18 and over</p> <p>Sample is representative for Slovenia by combination of gender and age, and by education and region</p>
<b>Questionnaire</b>	<p>Questionnaire was submitted by the commissioner, and harmonised. Questionnaire was set up so as to facilitate the comparison of results with the preceding survey results</p> <p>Time required for completion of questionnaire: t=10 minutes</p>
<b>Citation</b>	<p>At publication of results of this Report the following information shall be cited:</p> <p>Implemented by: Valicon, d.o.o.</p> <p>Population included: citizens of Slovenia, aged 18 and over</p> <p>Sample size: entire Slovenia: n=721</p> <p>Implementation date: 26.11. – 30.11.2020</p> <p>Method: CAWI, Computer Assisted Web Interviewing</p>

## DECLARATION ON INTERVIEWEE PERSONAL DATA PROTECTION

In line with the ESOMAR and AAPOR Codes, the Valicon company is committed to interviewee personal data protection. Thus, Valicon shall in all every respect avoid any possibility of interviewee identity recognition. All the variables or rubrics, which could directly show interviewee identity, have been removed from databases and reports. Likewise, interviewee responses are physically segregated from interviewee data. Any trial of intentional interviewee identification or interviewee identity disclosure from the side of the commissioner, or the Valicon company, shall constitute a violation of the aforementioned Codes.

## 2. Summary and Findings



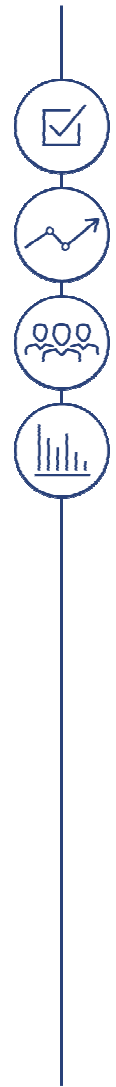
## Summary and Findings

- According to one third (30 %) of respondents, animal products constitute the highest health risk. Most frequent reasons for certain foods to constitute a health risk include the diseases (20 %), content of artificial substances (15 %) and content of additives and/or preservatives (12 %).
- Confidence in food safety constantly increases with age, but only **5 % of respondents have full confidence in that the food they buy is safe**.
- More than a half (56 %) of respondents agree that food produced in the EU is safer than that from third countries; however, as compared to 2017, this proportion has characteristically decreased. Likewise decreased has the proportion of those attributing more advantages than risks to the use of new technologies in nutrition. As compared to the 2017 results, a somewhat increased level of scepticism among the respondents is observed.
- The highest level of concern (77 %) have the respondents expressed as to contaminants and residues of veterinary medicinal products in foods. In general, more than a half of respondents expressed concern as to the majority of elements enumerated. Exceptions are only the allergic reaction and food quality and freshness. Concerns were expressed by 39 % respondents as to the first, and by 24 % respondents as to the latter.
- As to perception of genetically modified food and food obtained from cloned animals, this year's survey shows a characteristically lower share of respondents, who see a public health risk in such food types. Nevertheless, the readiness to consume any such food type is relatively low; 18 % of respondents would consume genetically modified food, and 11 % would consume food obtained from cloned animals.

## Summary and Findings

- Visibility of European Food Safety Authority does not characteristically change in time; however, as compared to the 2017 survey, characteristically increased (+15 percentage points) has the share of respondents, who have heard of the Agency, but do not know it.
- The main sources of information as to food safety are the internet and product labelling (designations). As to confidence in the sources of information, the respondents have most confidence in scientists, European Food Safety Authority, and consumer organisations. Full confidence in scientists show 9 % of respondents, and 6 % of respondents in European Food Safety Authority. As compared to 2017, the level of confidence has increased with all the three sources of information.
- The least confidence is placed in the media; 17 % of respondents do not at all have confidence in the media in this sector, and in general, the level of confidence in the media has been decreasing through the years.
- In the highest degree, the EU laws contribute to food safety, and the activities of the European Food Safety Authority, and the share of respondents attributing to them such contribution has been increasing through the years. As compared to 2017, their share has characteristically increased.

### 3. Sample Description

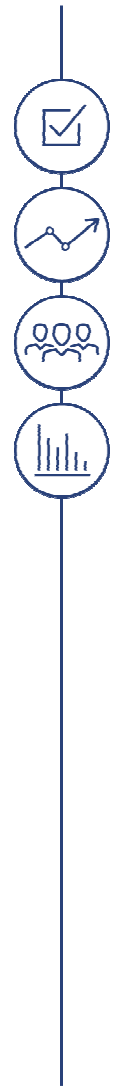




# Sample Structure

		n	%
Gender	Male	367	51%
	Female	354	49%
Age	18 to 34	199	28%
	35 to 54	266	37%
	55 and over	256	35%
Education	Elementary + Vocational	147	20%
	Secondary	379	53%
	Higher, university or more	192	27%
Region	Pomurje	41	6%
	Podravje	115	16%
	Koroška	25	3%
	Savinja	90	12%
	Zasavje	20	3%
	Posavje	26	4%
	South-eastern Slovenia (Dolenjska)	49	7%
	Central Slovenian	187	26%
	Gorenjska	70	10%
	Primorje-Notranjska	18	2%
	Goriško	40	6%
	Littoral-Karst	41	6%

## 4. Survey Results



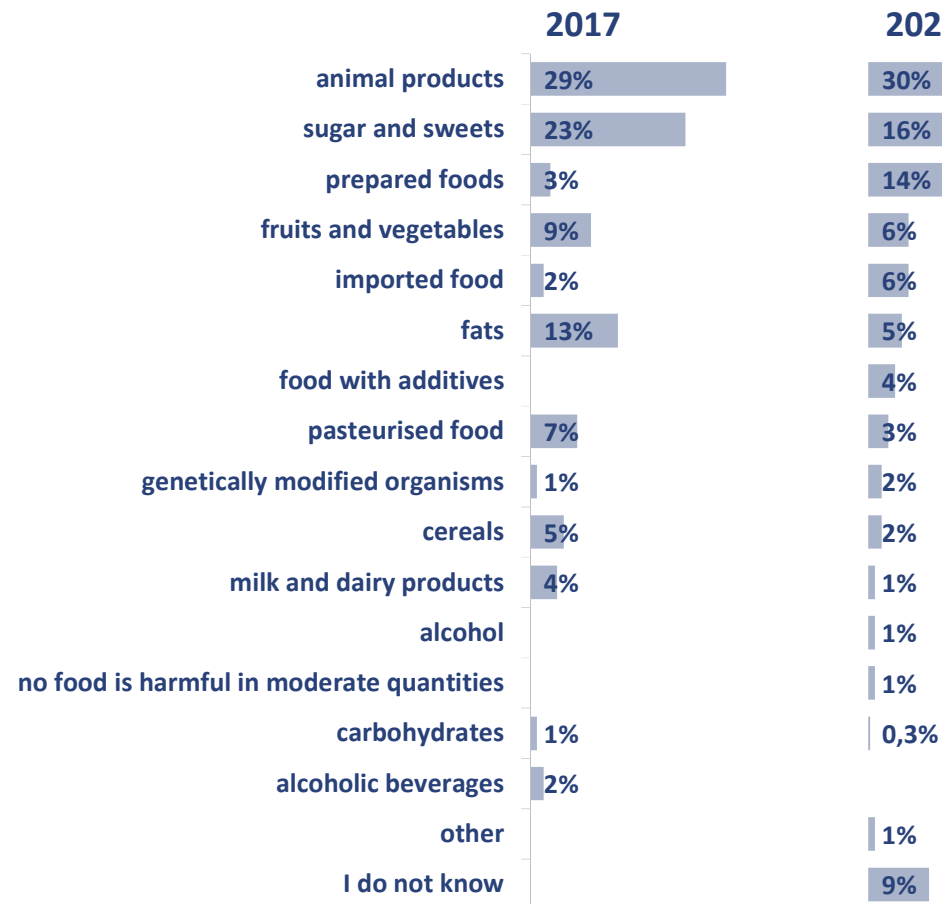
## 4.1. Food Safety Perception

SURVEY RESULTS



- 30 % of respondents find that **animal products** constitute the highest health risk. This food was almost in an identical percentage selected as the food constituting the highest health risk also in the 2017 survey.
- 16 % of respondents stated the **sugar and sweets**, and 14 % of respondents indicated **prepared food**. The latter was indicated by characteristically more respondents, than in the 2017 survey.

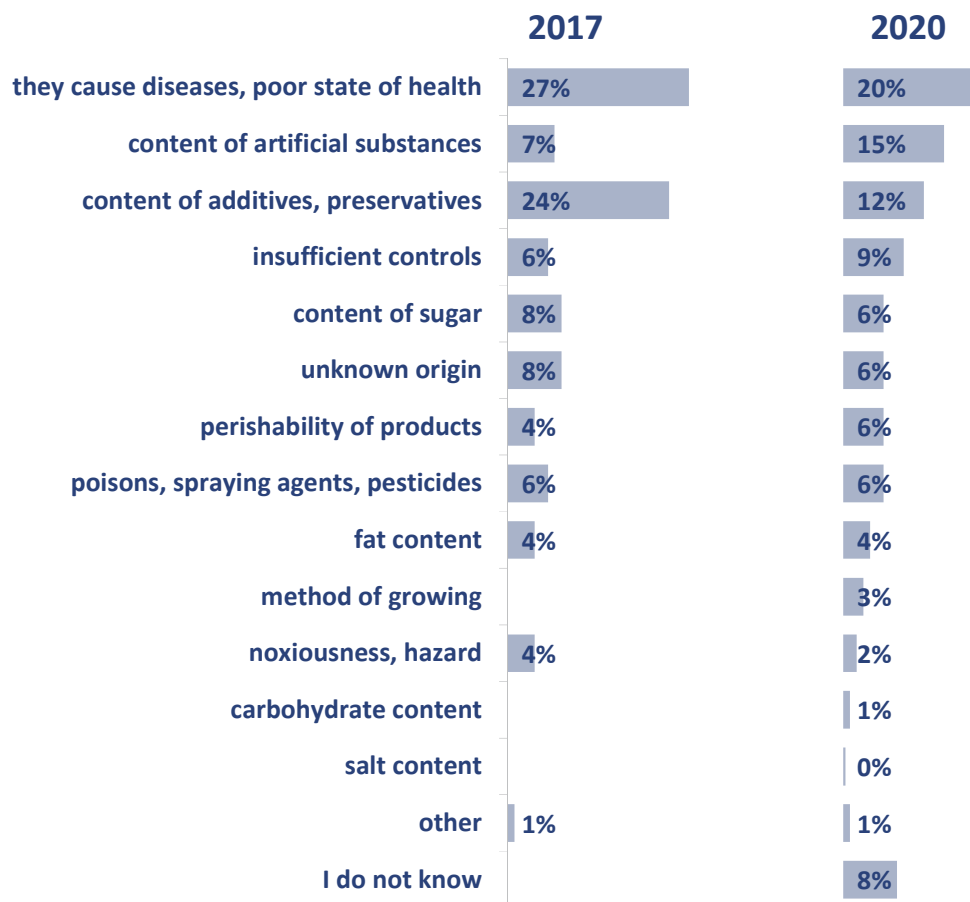
## Foods constituting the highest health risk



Which foods that you consume constitute the highest health risk, in your opinion?

- The most frequently indicated reason (20 %) is that they cause disease or poor state of health. Second (15 %) is the **content of artificial substances**, and next is the **content of additives, preservatives**.

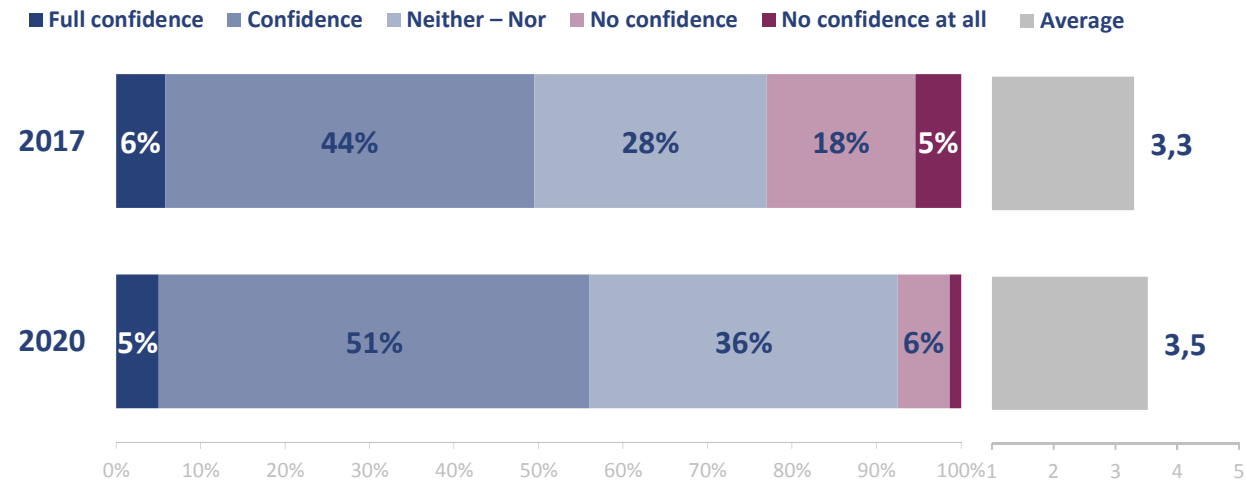
### Foods constituting the highest health risk - reasons



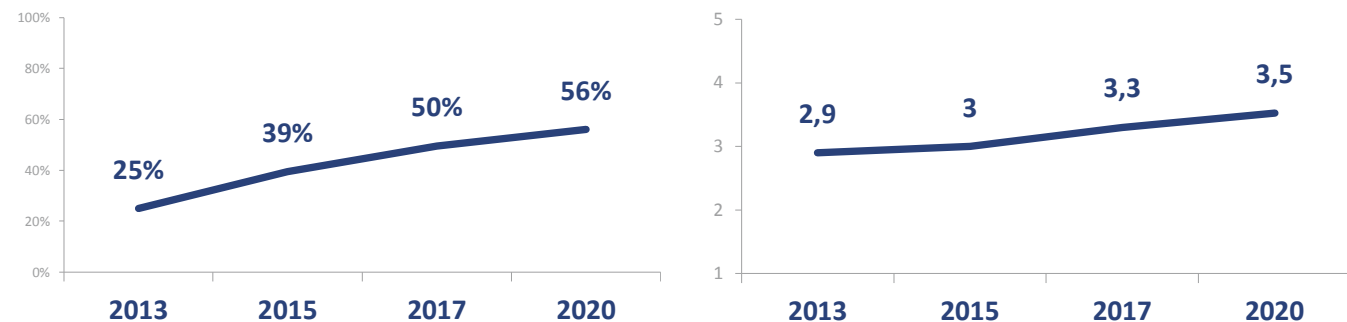
Why do you believe that such foods constitute a risk to your health?

- 56 % of respondents have confidence in, or have full confidence in the supply of safe food. The difference, as compared to 2017, is statistically significant, and otherwise as well, the trend is showing a constant increase in confidence in food safety.

## Confidence in food safety



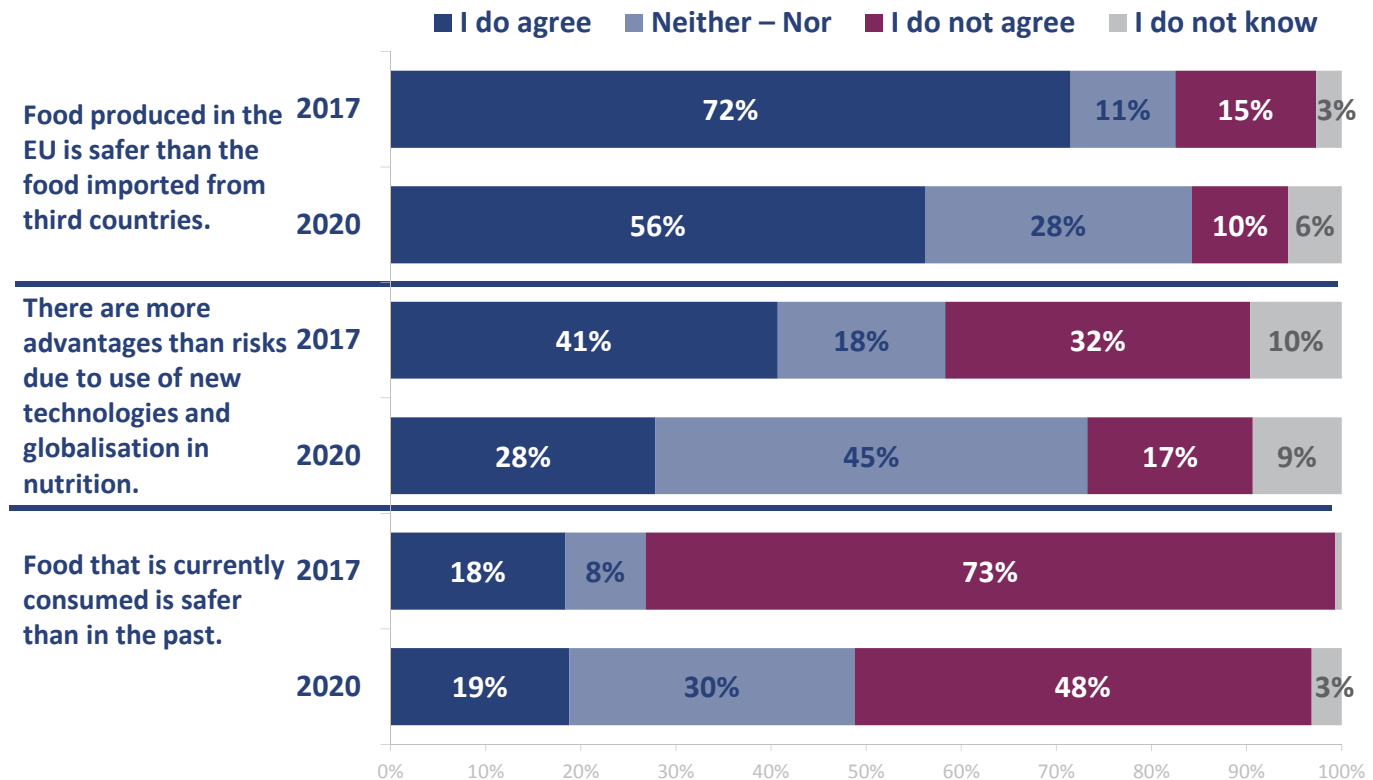
### COMPARISON IN TIME: SHARE OF RESPONSE “I HAVE FULL CONFIDENCE IN” + “I HAVE CONFIDENCE IN” AND AVERAGE



Do you have confidence in the supply of safe food (do you believe that food you buy is safe)?

- As compared to the 2017 survey, certain characteristic changes are observable in the perception of safe food supply.
- Characteristically decreased has the agreement of respondents (-16 percentage points) that food produced in the EU is safer than food imported from third countries. Characteristically decreased has also the agreement of respondents (-13 percentage points) that there are more advantages than risks due to use of new technologies in nutrition.
- As compared to the 2017 results, a somewhat increased level of scepticism among the respondents is observed.

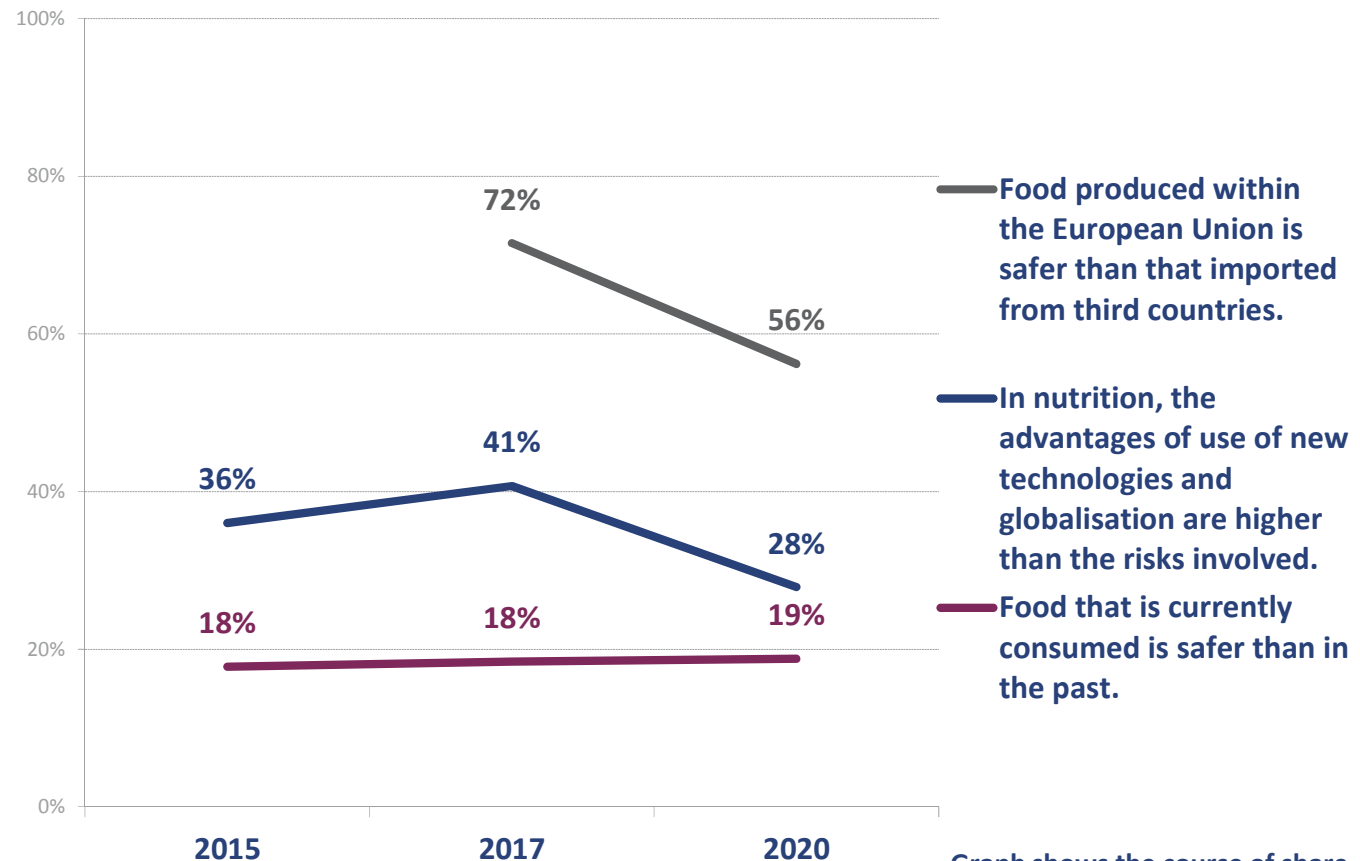
## Supply of safe food



Do you agree with the following statements as to the supply of safe food?

- The belief that food is currently safer than that of the past does not change in time. This statement is constantly affirmed by approximately one fifth of the respondents.
- Though the level of agreement has characteristically decreased, as compared to 2017, more than a half (56 %) of respondents still believe that food produced in the EU is safer than that from third countries.

## Supply of safe food



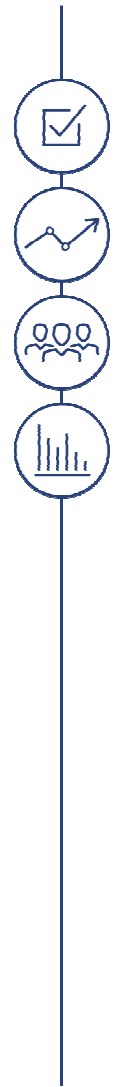
Graph shows the course of share of response "I do agree" in time.

Do you agree with the following statements as to the supply of safe food?



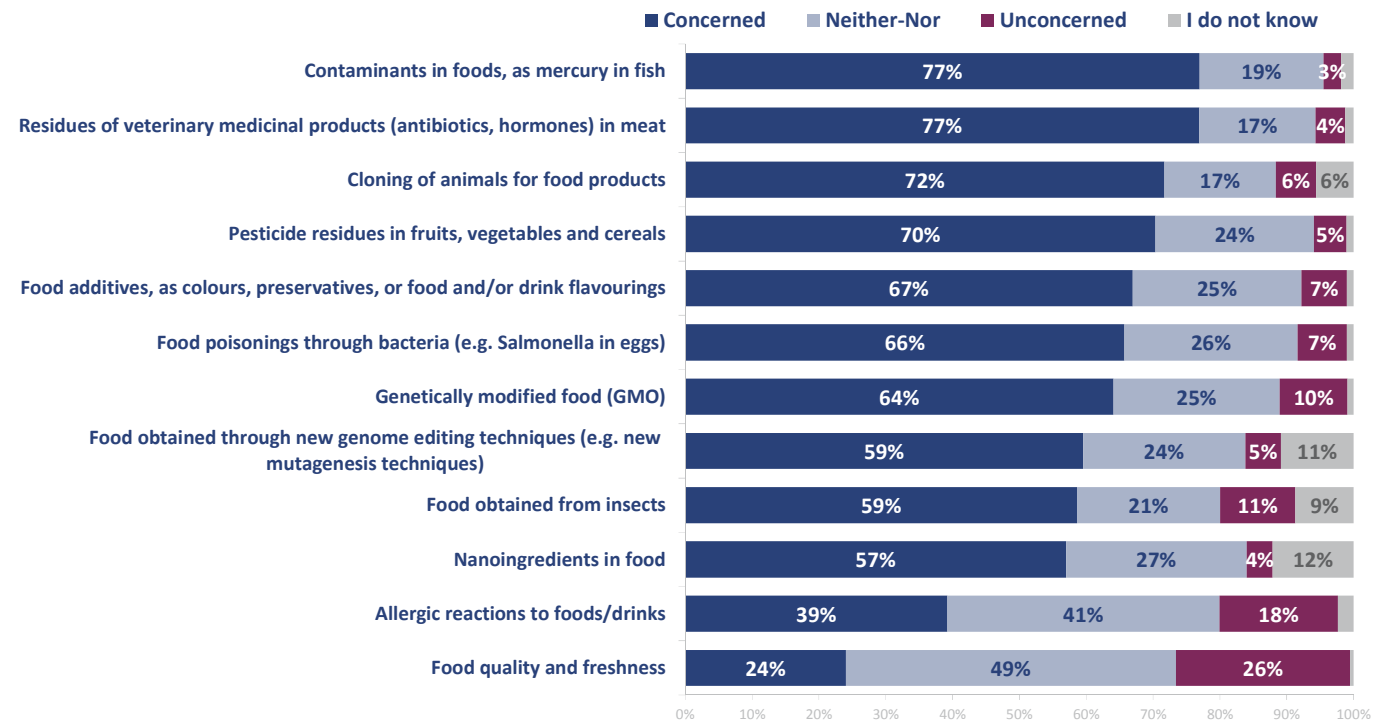
## 4.2. Food Safety Concerns

SURVEY RESULTS



## Food safety concerns

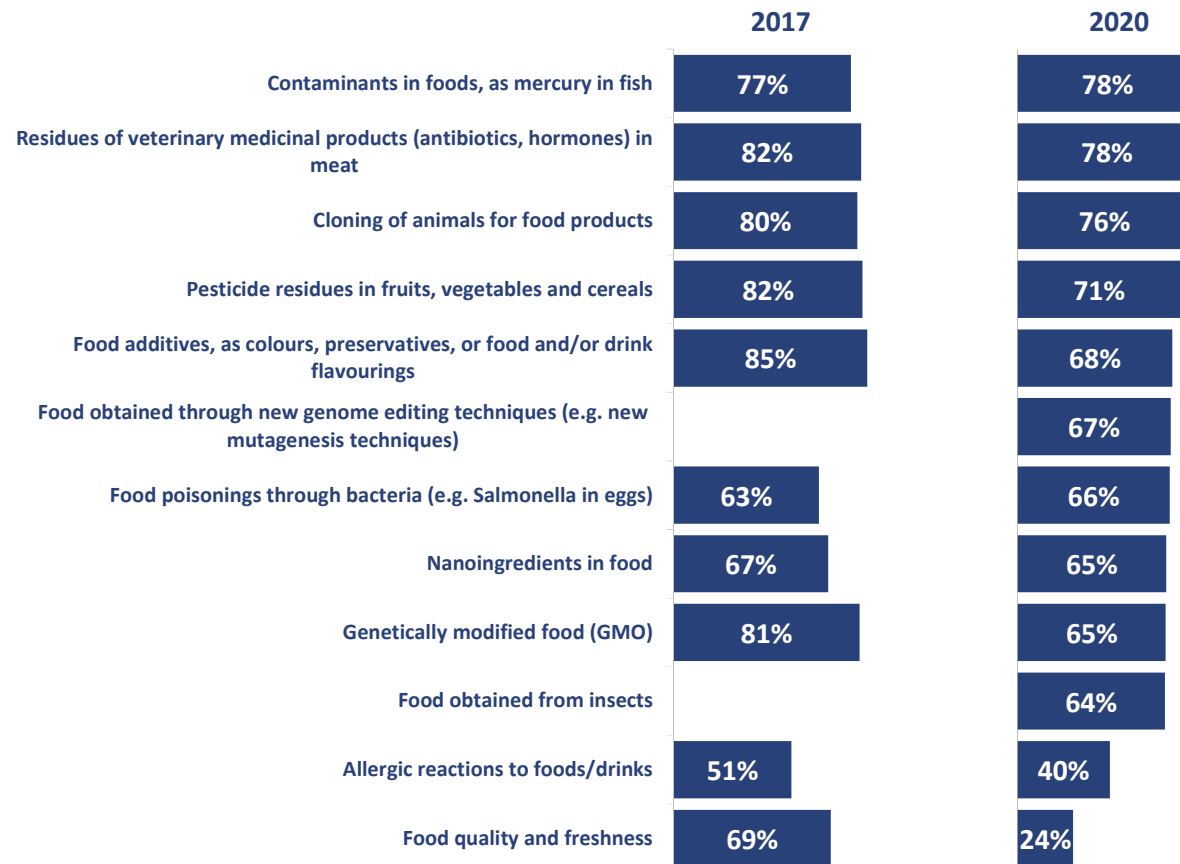
- The highest level of concern (77 %) have the respondents expressed as to contaminants and residues of veterinary medicinal products in foods.
- In general, more than a half of respondents expressed concern as to the majority of elements enumerated. Exceptions are only the allergic reaction and food quality and freshness. Concerns were expressed by 39 % respondents as to the first, and by 24 % respondents as to the latter.

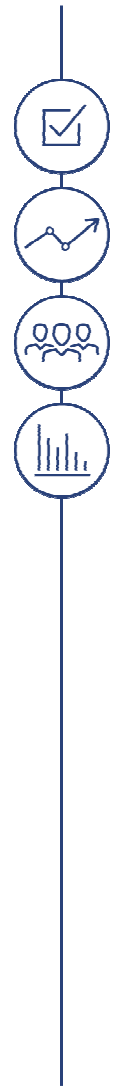


Please, indicate for each of the following items, whether you are (most) concerned; neither concerned nor unconcerned, or not concerned at all about it.

- The 2017 survey applied the scale:
  - Most concerned
  - Rather concerned
  - Not concerned
- The 2020 survey applied the updated scale:
  - (most) Concerned
  - Neither-Nor
  - Unconcerned
- For 2017, the Graph shows the sum of share of responses “Most concerned” and “Rather concerned”. For 2020, the Graph shows the share of responses “(most) Concerned”.
- *Food obtained from insects, and food obtained through new genome editing techniques* were first included in survey in 2020.

## Food safety concerns – as compared to 2017



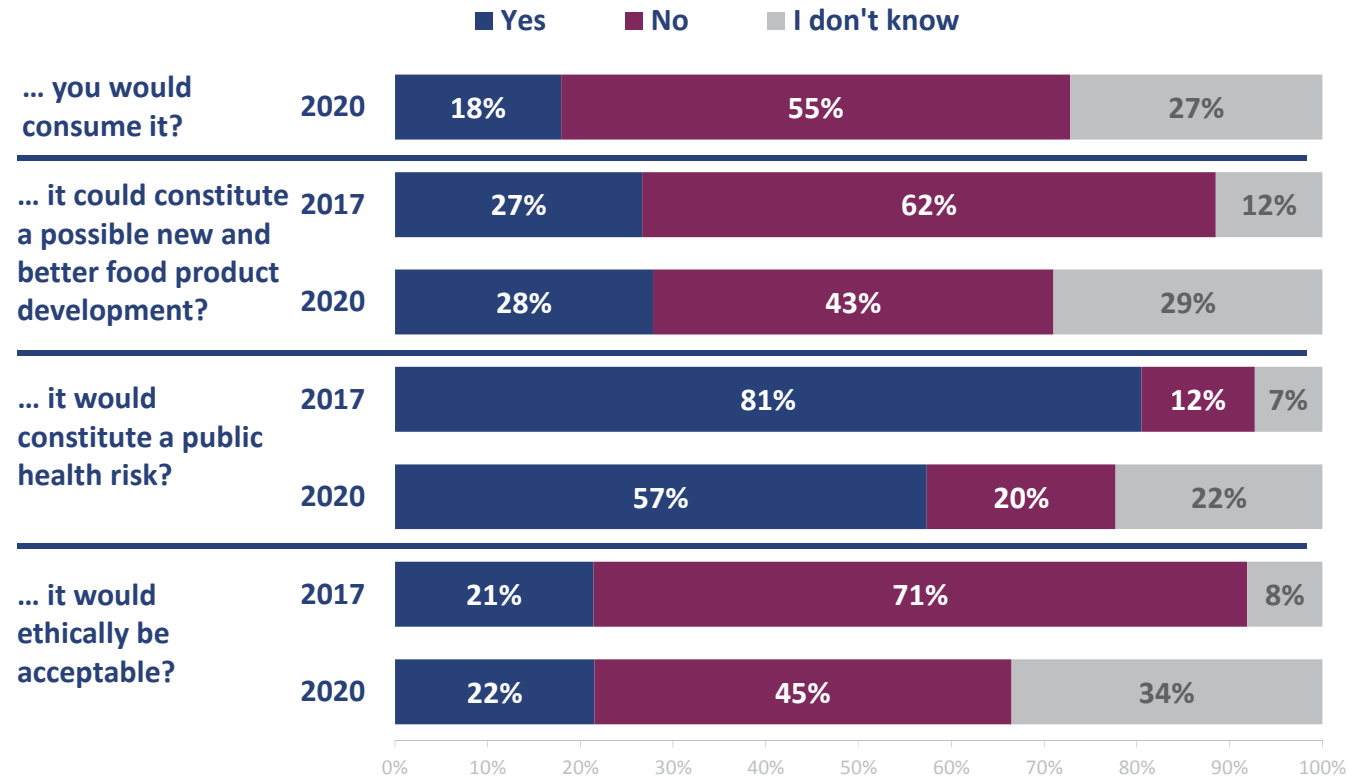


## 4.3. Perception of Genetically Modified Food

SURVEY RESULTS

- Genetically modified food would consume 18 % of respondents.
- As compared to the 2017 survey, a decrease in scepticism as to the possibility of GMOs to be used in development of new food products is observed (response NO: 62 % → 43 %) and, likewise, the share of respondents believing that genetically modified food constitutes a public health risk has characteristically decreased (81 % → 57 %)
- Characteristically lower is also the percentage of respondents believing that ethically such food is not acceptable.

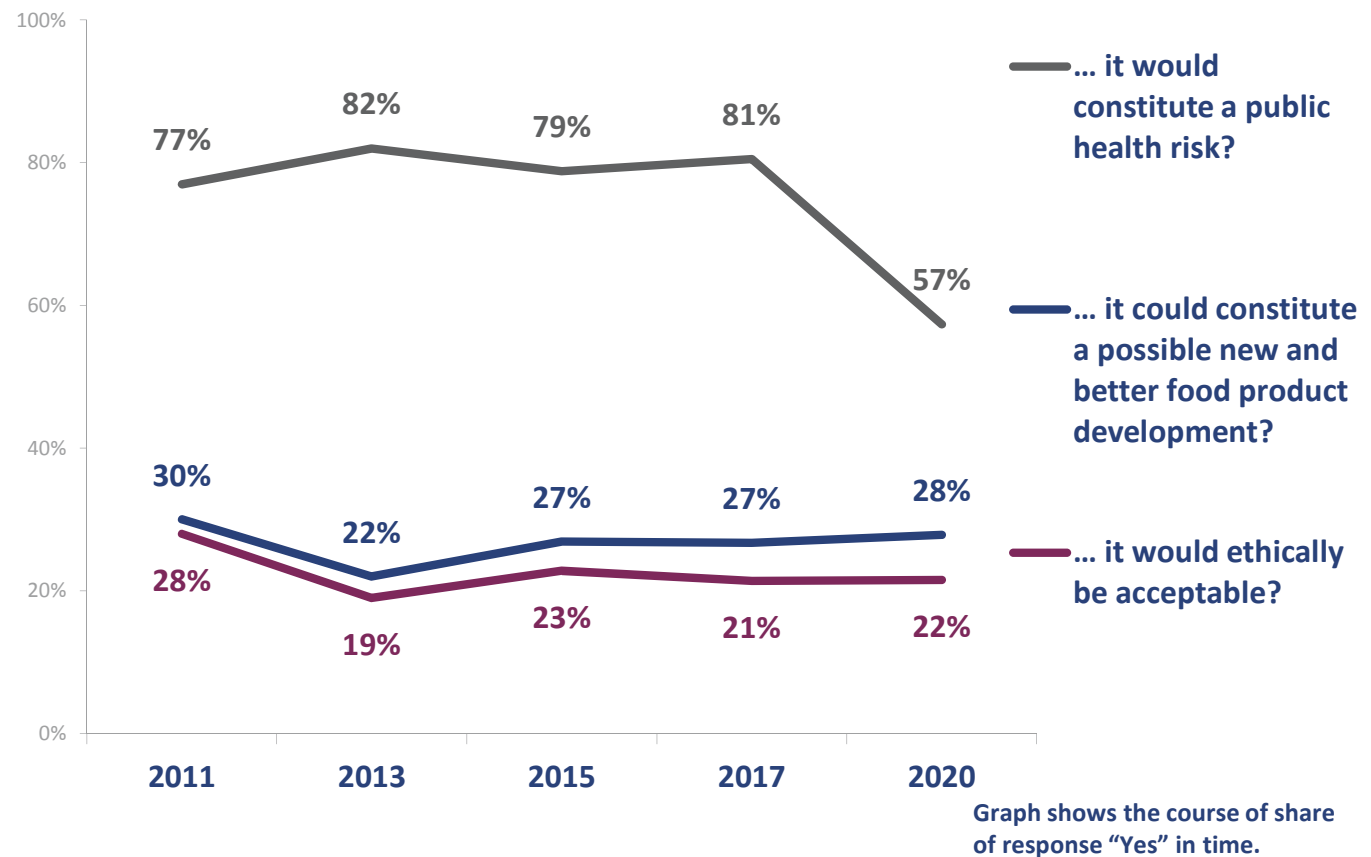
## GENETICALLY MODIFIED FOOD



Please, indicate for each of the enumerated items, whether ...

## GENETICALLY MODIFIED FOOD - COMPARISON

- Comparison of results shows that the share of respondents believing that genetically modified food constitutes a possibility for developing new products and that it is ethically acceptable remains at approximately the same level.
- Characteristically decreased in the latter survey is the share of respondents believing that genetically modified foods constitutes a public health risk.



Please, indicate for each of the enumerated items, whether ...

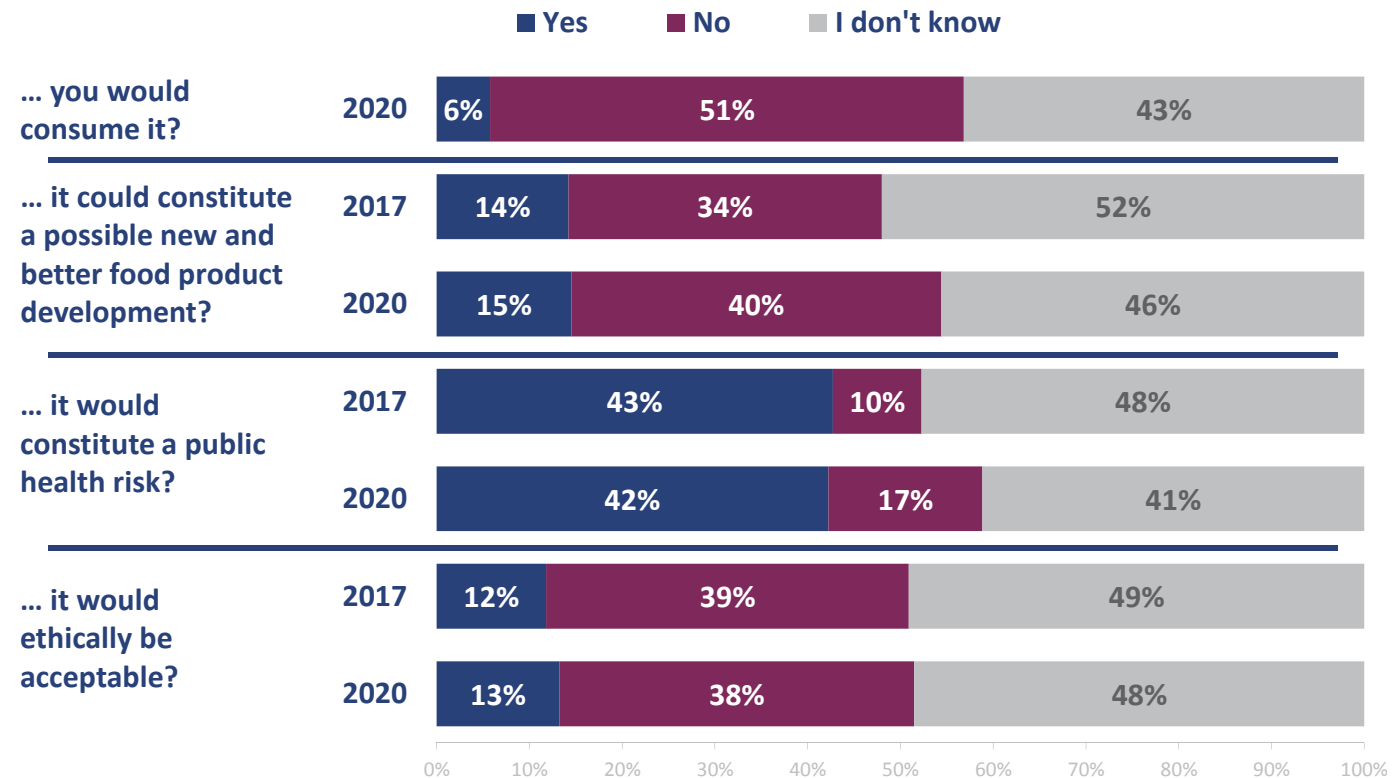


## 4.4. Perception of Food Containing Nanoingredients

SURVEY RESULTS

- 6 % of respondents have no concerns as to consumption of food containing nanoingredients.
- For such food, survey results show minimum deviations as compared to the 2017 survey; however, a high share of responses “I do not know” needs to be mentioned, which could be a sign of unfamiliarity as to what such food could actually consist of.

## FOOD CONTAINING NANOINGREDIENTS

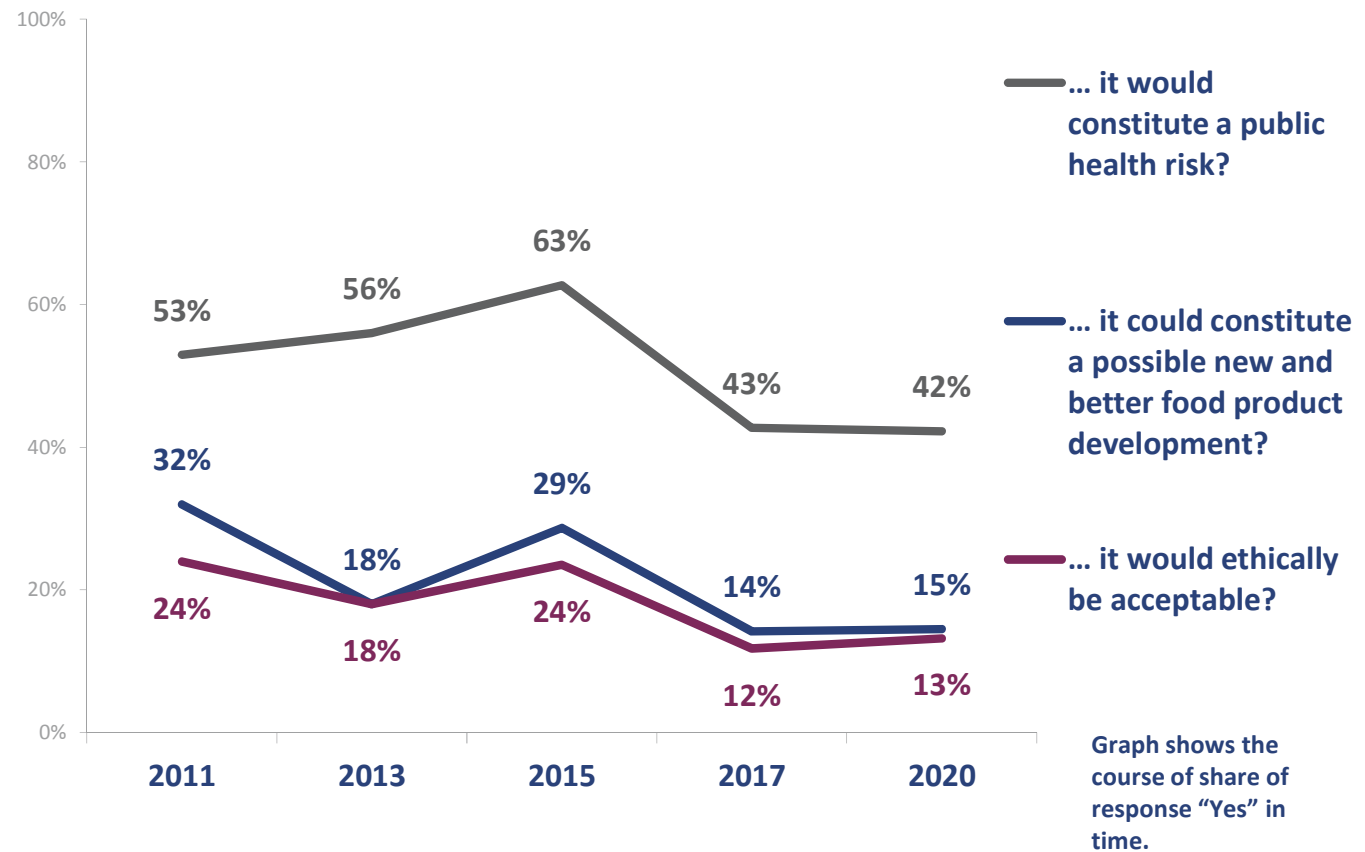


Please, indicate for each of the enumerated items, whether ...

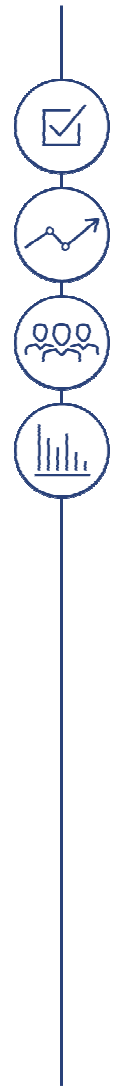


- In 2017, a decrease was measured at all the three elements, and in 2020, no significant changes were perceived.

## FOOD CONTAINING NANOINGREDIENTS - COMPARISON



Please, indicate for each of the enumerated items, whether ...

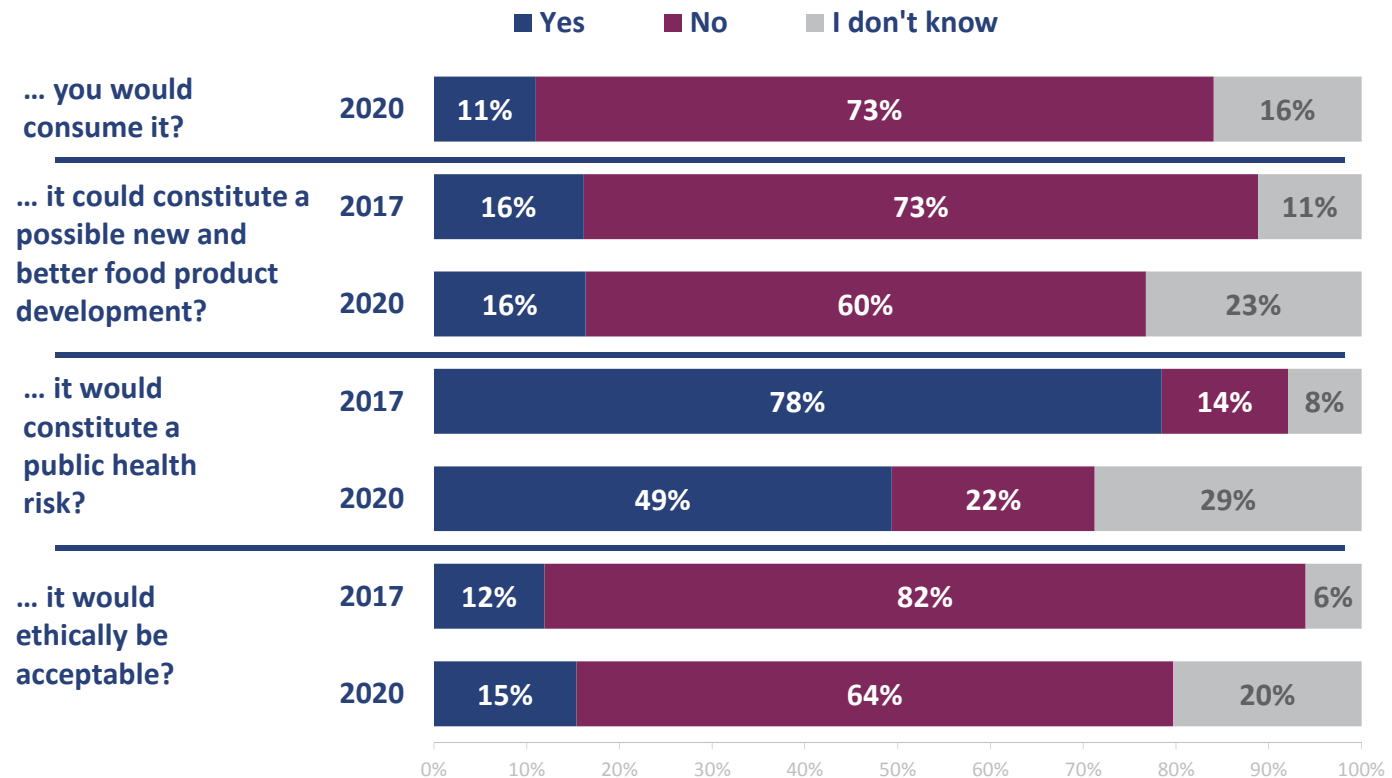


## 4.5. Perception of Food Obtained from Cloned Animals

SURVEY RESULTS

- As to food from cloned animals, a high level negative attitude was perceived also in 2020.
- Otherwise, characteristically has decreased the share of respondents believing that food does not constitute a possibility of development, and that it is ethically unacceptable; at the same time, the share of responses “I do not know” has increased at these two items.
- As compared to 2017, the share of respondents believing that such food constitutes a public health risk, has characteristically decreased (78 % → 49 %).

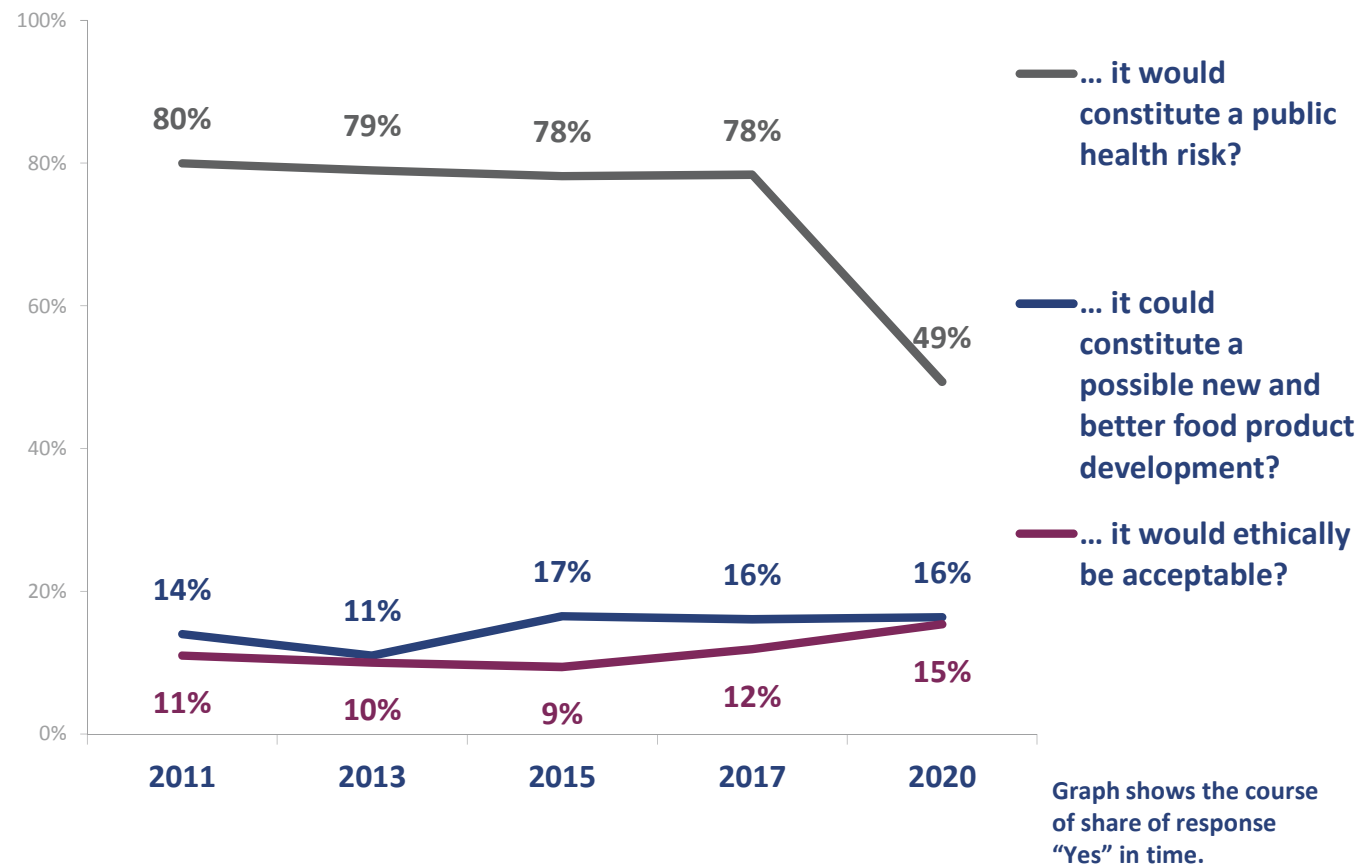
## FOOD OBTAINED FROM CLONED ANIMALS



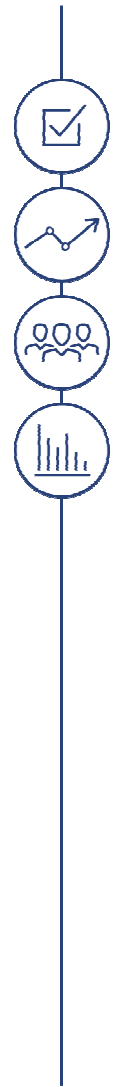
Please, indicate for each of the enumerated items, whether ...

## FOOD OBTAINED FROM CLONED ANIMALS - COMPARISON

- Share of respondents believing that food obtained from cloned animals constitutes a possibility of development, and it is ethically acceptable, has only minimally changed through the years.
- The 2020 survey results are most obviously showing a decrease in the share of respondents attributing a public health risk to such food.



Please, indicate for each of the enumerated items, whether ...

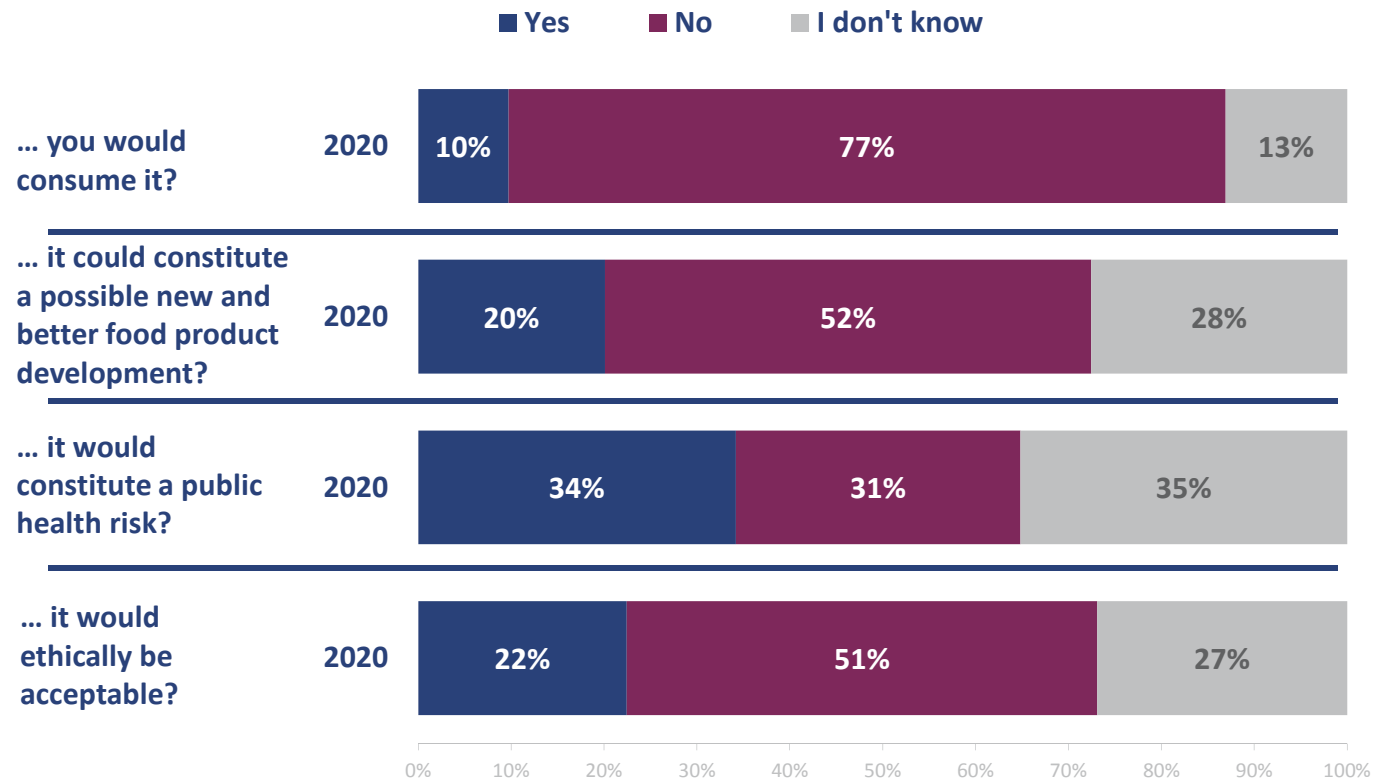


## 4.6. Perception of Food Obtained from Insects

SURVEY RESULTS

- In the 2020 survey, food obtained from insects was added. 77 % of respondents would not consume such food, one half (52 %) believes that such food does not constitute a possibility of developing new food products, one third (34 %) believes that such food does constitute a public health risk, and one half (51 %) believes that it is ethically unacceptable.

## FOOD OBTAINED FROM INSECTS



Please, indicate for each of the enumerated items, whether ...

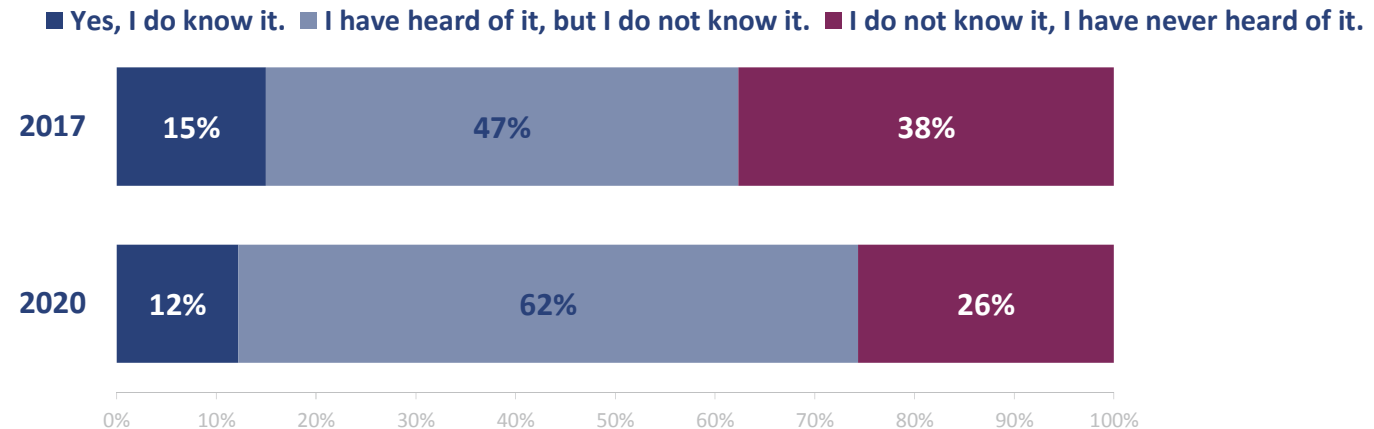


## 4.7. Visibility of European Food Safety Authority

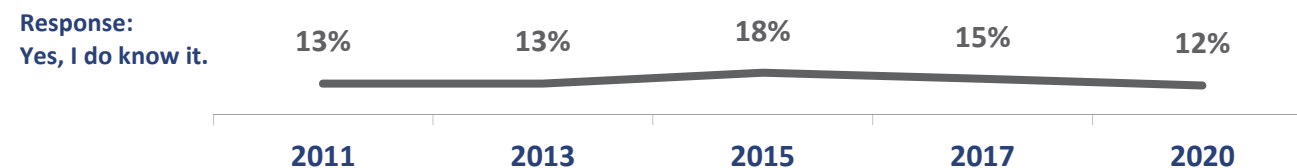
SURVEY RESULTS

- As compared to the 2017 survey, visibility of the European Food Safety Authority has not characteristically changed. Share of respondents knowing the Authority has actually decreased by 3 percentage points, but the difference is not statistically characteristic.
- However, in 2020 the share (+15 percentage points) of respondents having heard of the Authority but not knowing it has characteristically increased.

## Visibility of European Food Safety Authority



### COMPARISON IN TIME: SHARE OF RESPONSE "YES, I DO KNOW IT."

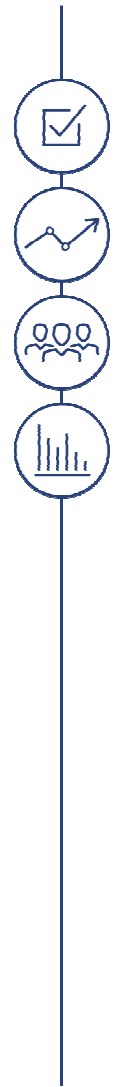


Do you know or have you heard of the European Food Safety Authority (EFSA) established in 2002?



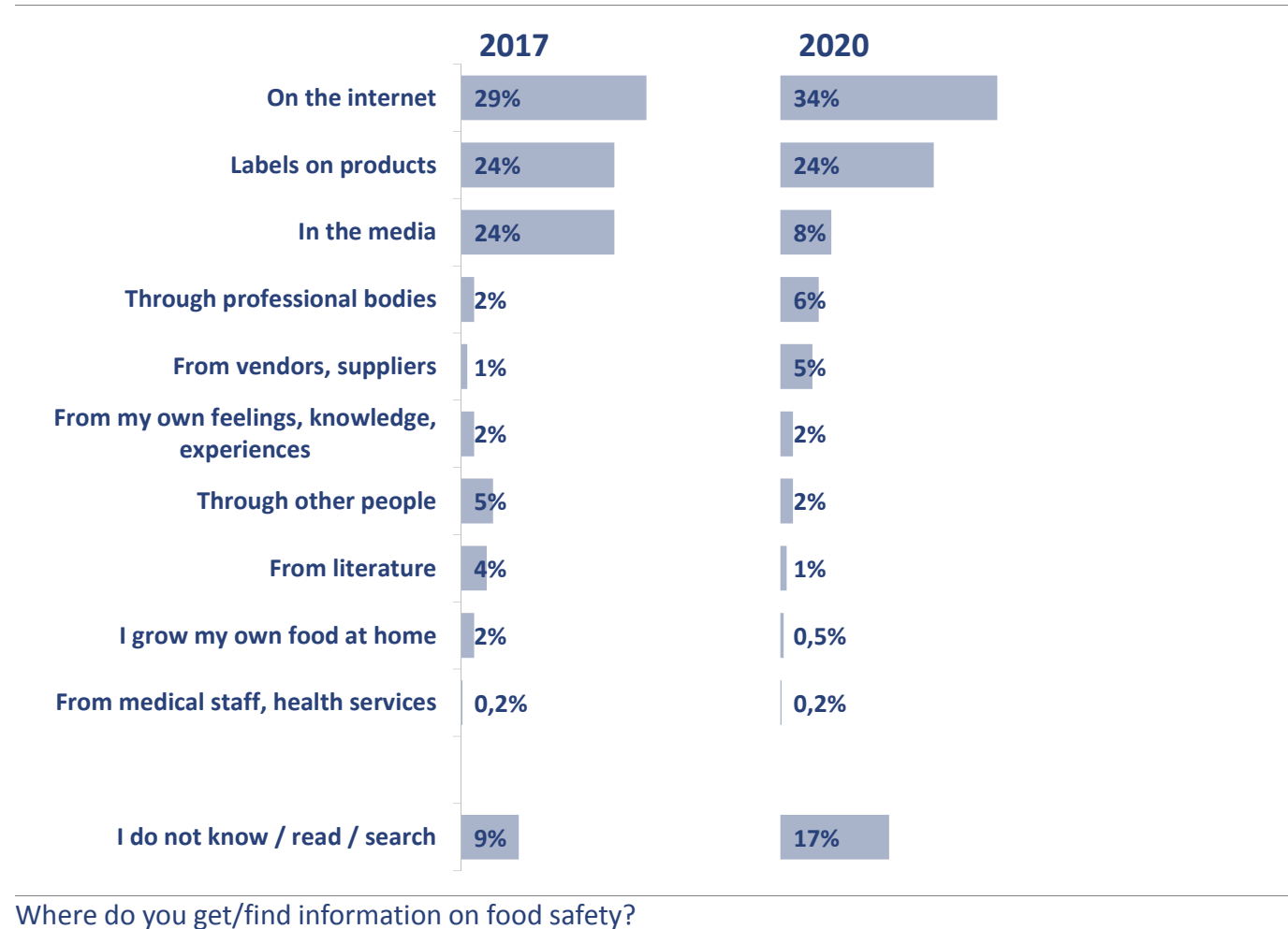
## 4.8. Food Safety Information

SURVEY RESULTS



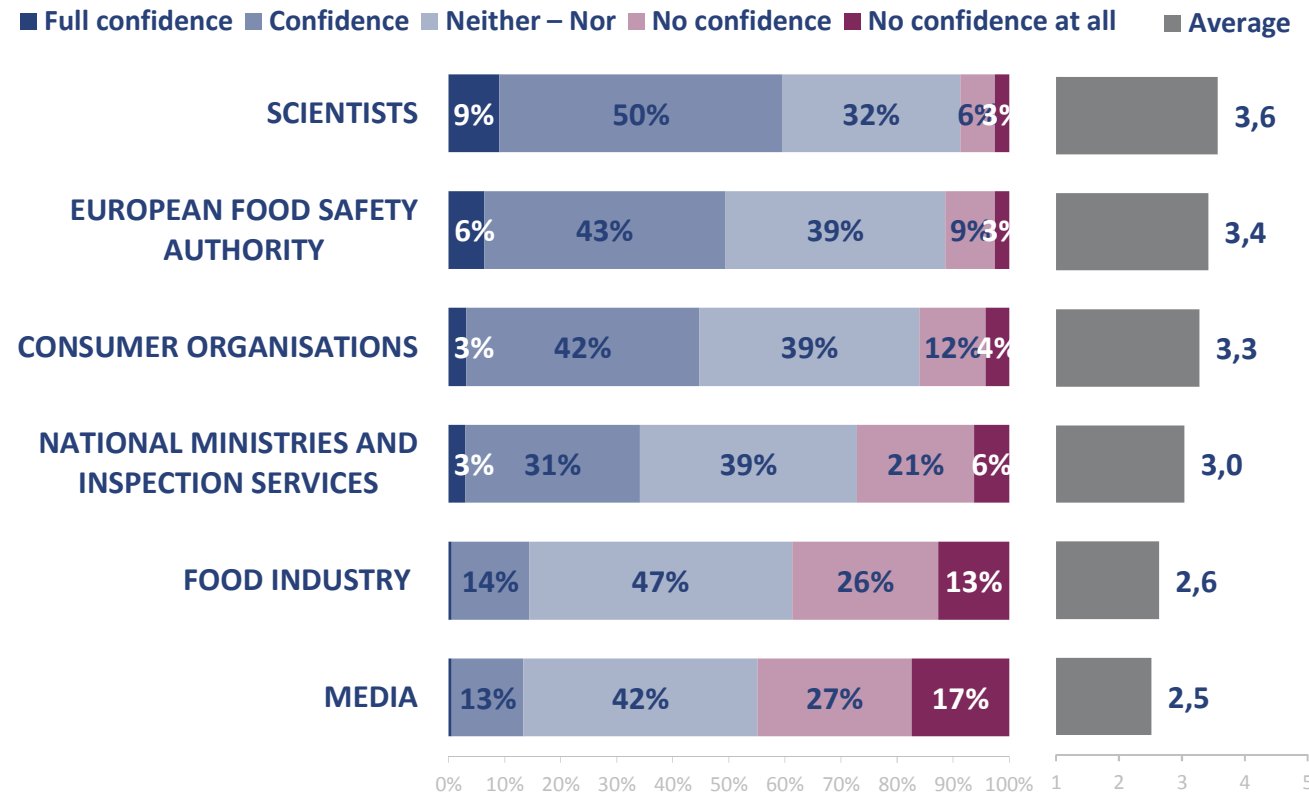
- Most frequent food safety information sources are **internet** (34 %) and **labels (designations) on products** (24 %).
- As compared to the 2017 survey, a significantly lower share (8 %) of respondents indicated the media as the source of food safety information.

## Food Safety Information



- The highest level of confidence is vested in information given by scientists; 9 % of respondents have full confidence in such information, and additional 50 % do have confidence in it.
- There follow the European Food Safety Authority, and consumer organisations, with comparable confidence levels.

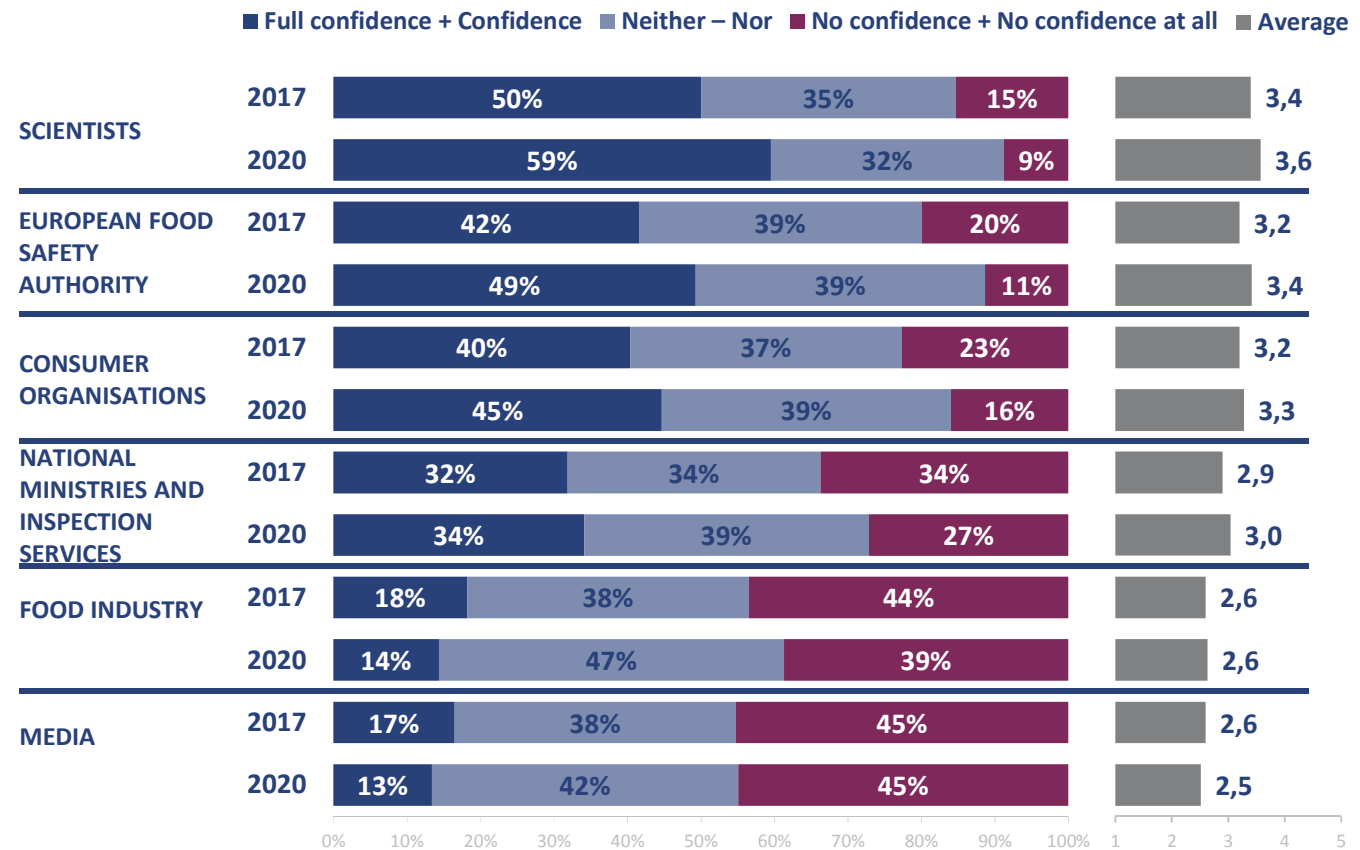
## Confidence in sources of information



Please, evaluate with a mark between 1 and 5 each of the following sources as to how much CONFIDENCE you have in it, as to dissemination of information on food safety and the possible risks.

- As compared to 2017, confidence in information has increased. It is most evident in the case of scientists (+9 percentage points), European Food Safety Authority (+7 percentage points) and consumer organisations (+5 percentage points) and consumer organisations (+5 percentage points).

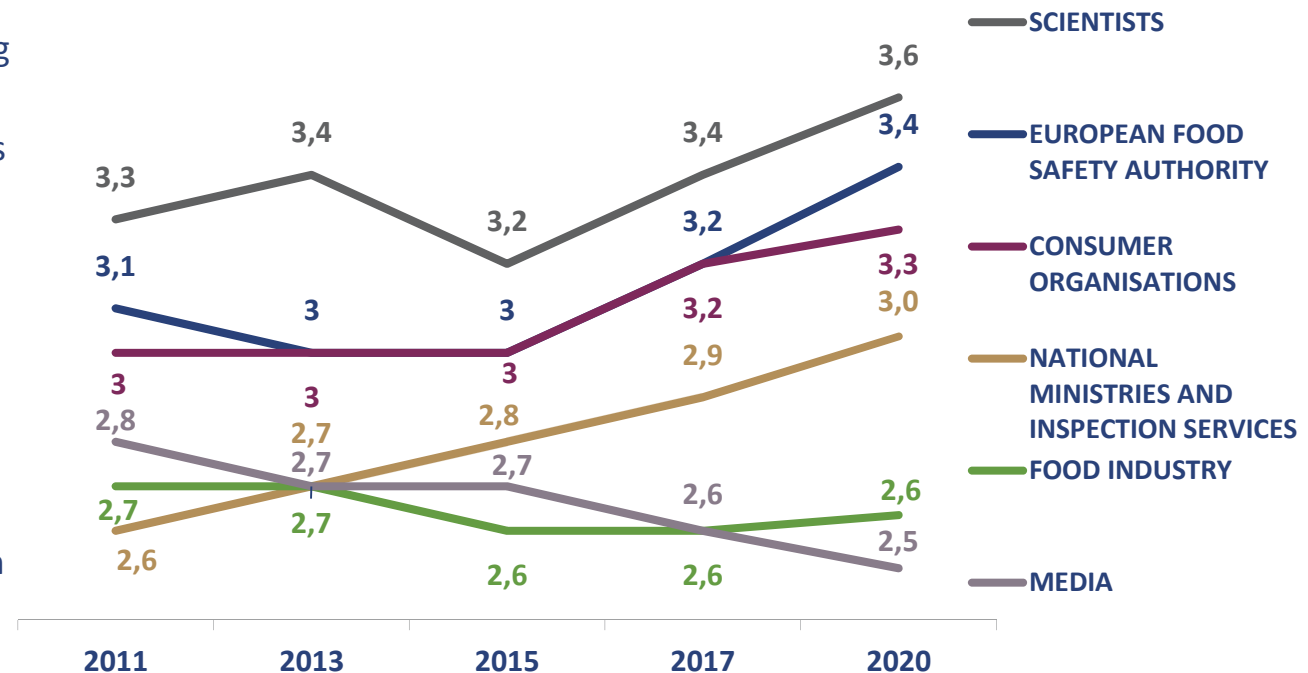
## Confidence in sources of information – comparison to 2017



Please, evaluate with a mark between 1 and 5 each of the following sources as to how much CONFIDENCE you have in it, as to dissemination of information on food safety and the possible risks.

## Confidence in sources of information – comparison of averages per years

- Confidence in scientists and European Food Safety Authority has constantly and characteristically been increasing as from 2015.
- Confidence in national ministries and inspection services has constantly been showing an increasing trend, though the confidence in these institutions is still characteristically lower than in the above-mentioned ones.
- Confidence in consumer organisations has gradually been increasing, whilst confidence in food industry has been rather constant in time.
- Confidence in media, as regards food safety information, has been decreasing in time.



Please, evaluate with a mark between 1 and 5 each of the following sources as to how much CONFIDENCE you have in it, as to dissemination of information on food safety and the possible risks.

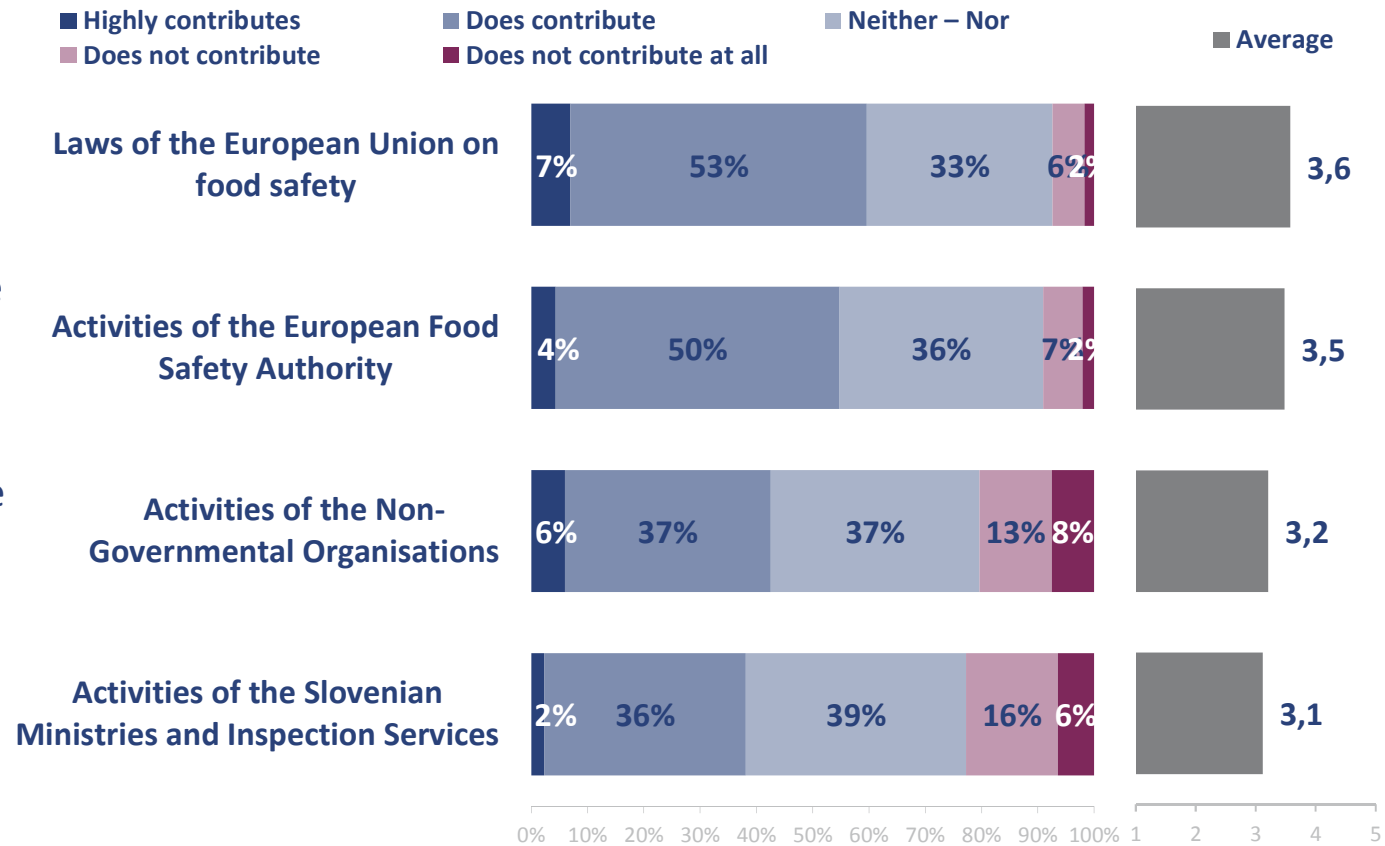


## 4.9. Perception of Contribution of Institutions to Food Safety

SURVEY RESULTS

- According to respondents, most contribution to food safety is provided by the laws of the European Union (7 % of respondents believe that the laws highly contribute, and 53 % believe that they do contribute), and by the activities of the European Food Safety Authority (4 % of respondents believe that it highly contributes, and 50 % believe that it does contribute).

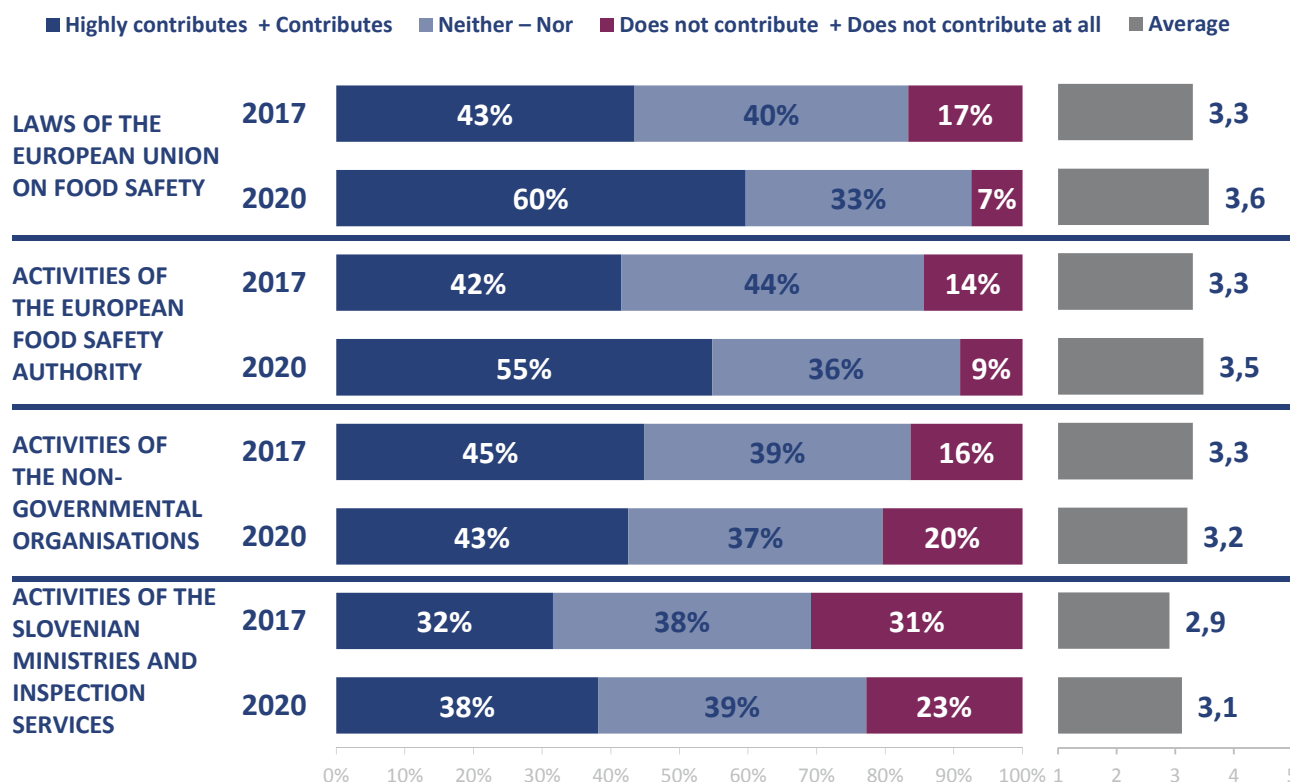
## Contribution of institutions to food safety



Please, evaluate with a mark between 1 and 5 each of the following items as to how efficiently it contributes through its activities to food safety.

- As compared to the 2017 survey, characteristically increased the share of respondents attributing the contribution to the laws of the European Union on food safety (+17 percentage points), and to the activities of the European Food Safety Authority (+13 percentage points).
- Characteristically increased (+6 percentage points) also the share of respondents attributing the contribution to food safety to the activities of the Slovenian ministries and inspection services.

## Contribution of institutions to food safety – comparison to 2017

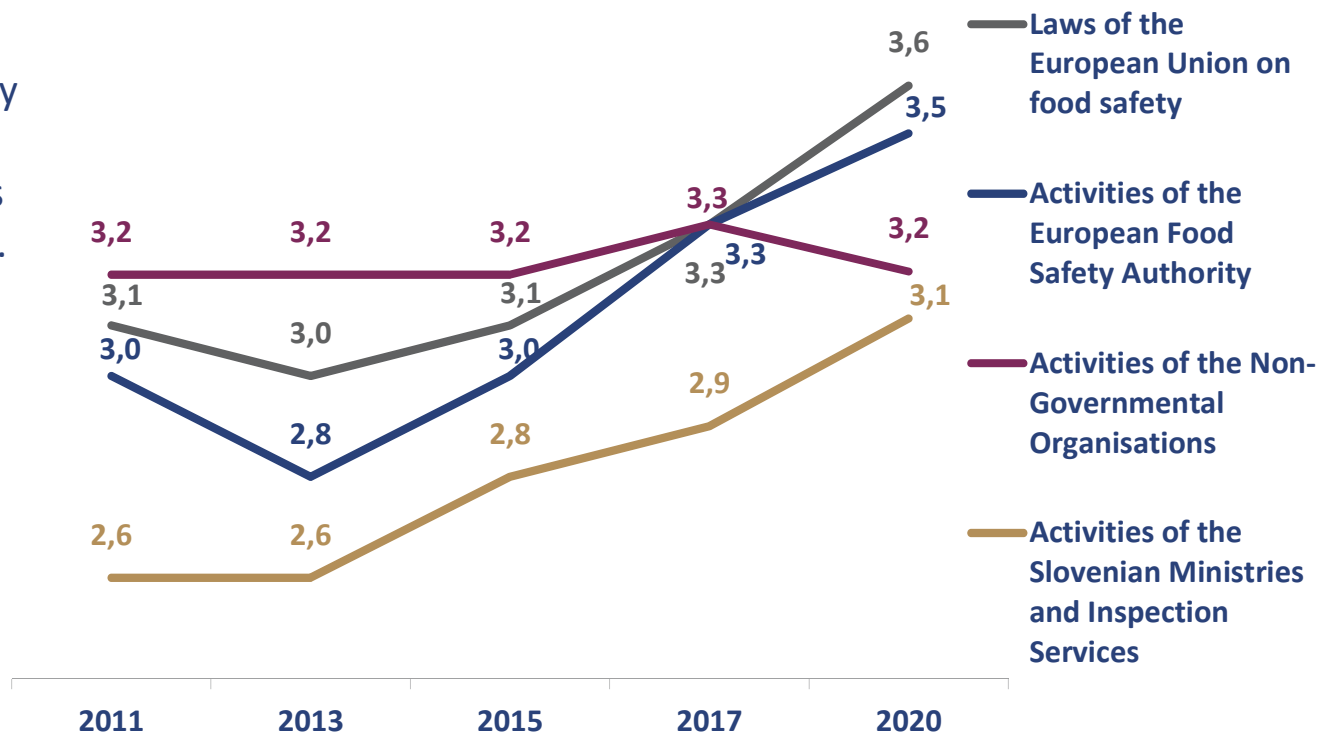


Please, evaluate with a mark between 1 and 5 each of the following items as to how efficiently it contributes through its activities to food safety.



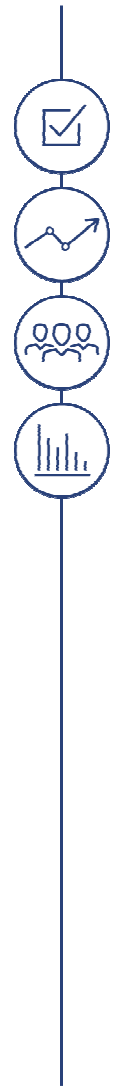
### Contribution of institutions to food safety – comparison of averages per years

- From 2013, most distinctive increase in attributed contribution to food safety was at European Food Safety Authority. In 2013, average mark of its contribution was 2.8, and in 2020 already 3.5.
- Least changes are in perceived contribution of activities of NGOs. Less contribution is attributed only to a part of Slovenian ministries and inspection services, with minimal difference and, considering constant increase of the latter from 2013, the situation may change in years to come.



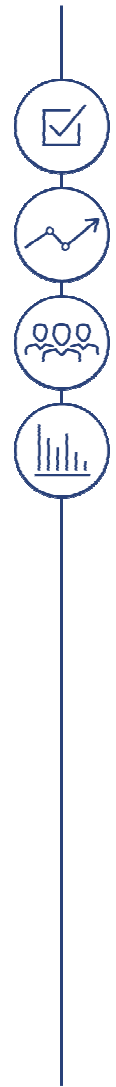
Please, evaluate with a mark between 1 and 5 each of the following items as to how efficiently it contributes through its activities to food safety.

## 5. Annexes



# 5.1. Baseline Statistics

ANNEXES



## Legend of identification of statistically characteristic differences

sig.hk	Level of statistical characteristics for the Chi-Square
0.00	It defines whether there exists the statistically characteristic connection between two variables. If the p-value of sig.hk is less than 0.05 / 0.1 (depending on the level of statistic characteristic applied), the statistically characteristic connection between two variables is in place.

### Positive deviations (above average)

	High deviation
	Medium / higher deviation
	Low deviation

### Negative deviations (below average)

	Low deviation
	Medium / higher deviation
	High deviation

# Confidence

Do you have confidence in the supply of safe food (do you believe that food you buy is safe)?

		Sample		I have no confidence in it at all.	I have no confidence in it.	I neither have nor do not have confidence in it.	I do have confidence in it.	I do have full confidence in it.	Average mark	
All	n=	721	721	10	45	263	367	37	721	3,52
	%	100,0%	100,0%	1,3%	6,2%	36,5%	51,0%	5,1%	100,0%	
Gender	Male	50,9%		2,1%	4,4%	35,4%	52,6%	5,5%		3,55
	Female	49,1%		0,5%	8,0%	37,6%	49,3%	4,6%		3,49
	sig.hk		0,08						0,03	
Age	18 to 34	27,7%		1,4%	6,1%	30,3%	52,2%	10,0%		3,63
	35 to 54	36,9%		1,9%	6,4%	40,7%	47,4%	3,7%		3,44
	55 and +	35,5%		0,7%	6,0%	36,9%	53,7%	2,7%		3,52
	sig.hk		0,01						0,12	
Education	Elementary + Vocational	20,5%		2,3%	3,9%	49,7%	40,0%	4,0%		3,39
	Secondary	52,8%		1,0%	6,6%	34,2%	52,2%	6,1%		3,56
	Higher, university and +	26,8%		0,9%	7,2%	30,6%	57,3%	4,0%		3,56
	sig.hk		0,01						0,09	
Region	Pomurje	5,6%		0,0%	3,5%	26,8%	65,3%	4,4%		3,71
	Podravje	15,9%		0,0%	9,2%	39,9%	42,7%	8,2%		3,50
	Koroška	3,4%		4,3%	8,9%	23,4%	63,4%	0,0%		3,46
	Savinja	12,4%		0,6%	4,7%	46,3%	46,2%	2,3%		3,45
	Zasavje	2,8%		0,0%	18,4%	31,0%	39,6%	11,0%		3,43
	Posavje	3,6%		2,3%	14,9%	44,4%	35,8%	2,6%		3,21
	SE Slovenia	6,8%		7,9%	3,7%	34,8%	51,4%	2,1%		3,36
	Central Slovenia	25,9%		0,3%	7,1%	32,3%	54,1%	6,2%		3,59
	Gorenjska	9,7%		1,0%	2,1%	36,9%	52,7%	7,3%		3,63
	Primorje + Notranjska	2,5%		3,1%	0,0%	25,6%	68,3%	3,1%		3,68
	Goriško	5,6%		4,1%	4,8%	38,4%	52,7%	0,0%		3,40
	Littoral-Karst	5,7%		0,0%	0,0%	43,7%	51,1%	5,3%		3,62
	sig.hk		0,01						0,27	

## Food quality and freshness

Please, indicate for each of the following items, whether you are (most) concerned; neither concerned nor unconcerned, or not concerned about it.

		Sample		I am (most) concerned	I am neither concerned nor unconcerned	I am not concerned	I do not know
All	n=	721	721	173	356	188	4
	%	100,0%	100,0%	24,0%	49,4%	26,1%	0,5%
Gender	Male	50,9%		20,6%	50,7%	27,7%	1,0%
	Female	49,1%		27,6%	47,9%	24,4%	0,0%
	sig.hk		0,04				
Age	18 to 34	27,7%		22,8%	50,2%	27,0%	0,0%
	35 to 54	36,9%		28,0%	45,4%	26,4%	0,3%
	55 and +	35,5%		20,9%	52,8%	25,0%	1,2%
	sig.hk		0,22				
Education	Elementary + Vocational	20,5%		31,4%	48,9%	18,6%	1,1%
	Secondary	52,8%		22,5%	50,5%	26,6%	0,4%
	Higher, university and +	26,8%		21,6%	47,5%	30,9%	0,0%
	sig.hk		0,08				
Region	Pomurje	5,6%		15,8%	67,4%	16,8%	0,0%
	Podravje	15,9%		25,2%	48,9%	25,8%	0,0%
	Koroška	3,4%		31,6%	45,4%	23,1%	0,0%
	Savinja	12,4%		35,7%	39,8%	22,8%	1,7%
	Zasavje	2,8%		18,6%	58,1%	23,3%	0,0%
	Posavje	3,6%		35,3%	36,8%	27,9%	0,0%
	SE Slovenia	6,8%		30,1%	46,9%	19,8%	3,2%
	Central Slovenia	25,9%		21,7%	48,0%	30,0%	0,4%
	Gorenjska	9,7%		10,8%	55,9%	33,2%	0,0%
	Primorje + Notranjska	2,5%		14,3%	60,9%	24,8%	0,0%
	Goriško	5,6%		24,1%	56,4%	19,4%	0,0%
	Littoral-Karst	5,7%		24,3%	46,0%	29,7%	0,0%
	sig.hk		0,19				

# Additives, as colours, preservatives, or food and/or drink flavourings

Please, indicate for each of the following items, whether you are (most) concerned; neither concerned nor unconcerned, or not concerned about it.

		Sample		I am (most) concerned	I am neither concerned nor unconcerned	I am not concerned	I do not know
All	n=	721	721	482	182	49	7
	%	100,0%	100,0%	66,9%	25,3%	6,8%	1,0%
Gender	Male	50,9%		65,5%	25,0%	8,5%	0,9%
	Female	49,1%		68,4%	25,5%	5,0%	1,0%
	sig.hk		0,33				
Age	18 to 34	27,7%		59,3%	29,6%	11,1%	0,0%
	35 to 54	36,9%		67,1%	25,1%	6,2%	1,6%
	55 and +	35,5%		72,7%	22,1%	4,1%	1,1%
	sig.hk		0,01				
Education	Elementary + Vocational	20,5%		64,3%	30,2%	4,5%	0,9%
	Secondary	52,8%		67,2%	23,7%	7,7%	1,4%
	Higher, university and +	26,8%		68,2%	24,6%	6,9%	0,3%
	sig.hk		0,54				
Region	Pomurje	5,6%		69,3%	30,7%	0,0%	0,0%
	Podravje	15,9%		59,4%	34,2%	6,3%	0,0%
	Koroška	3,4%		60,2%	37,6%	2,2%	0,0%
	Savinja	12,4%		68,0%	25,3%	3,6%	3,1%
	Zasavje	2,8%		67,5%	20,4%	12,2%	0,0%
	Posavje	3,6%		78,9%	13,3%	2,6%	5,2%
	SE Slovenia	6,8%		64,7%	24,8%	5,5%	4,9%
	Central Slovenia	25,9%		65,8%	23,9%	10,3%	0,0%
	Gorenjska	9,7%		59,6%	30,4%	10,1%	0,0%
	Primorje + Notranjska	2,5%		75,5%	24,5%	0,0%	0,0%
	Goriško	5,6%		82,9%	10,3%	6,8%	0,0%
	Littoral-Karst	5,7%		80,3%	10,5%	7,8%	1,5%
	sig.hk		0,01				

## Pesticide residues in fruits, vegetables, and cereals

Please, indicate for each of the following items, whether you are (most) concerned; neither concerned nor unconcerned, or not concerned about it.

		Sample		I am (most) concerned	I am neither concerned nor unconcerned	I am not concerned	I do not know
All	n=	721	721	507	171	35	8
	%	100,0%	100,0%	70,4%	23,7%	4,9%	1,1%
Gender	Male	50,9%		65,6%	25,9%	6,9%	1,6%
	Female	49,1%		75,3%	21,4%	2,7%	0,5%
	sig.hk		0,01				
Age	18 to 34	27,7%		59,8%	29,1%	10,3%	0,8%
	35 to 54	36,9%		72,5%	23,7%	3,4%	0,4%
	55 and +	35,5%		76,4%	19,5%	2,2%	1,9%
	sig.hk		0,00				
Education	Elementary + Vocational	20,5%		71,9%	22,0%	3,4%	2,7%
	Secondary	52,8%		66,7%	26,4%	6,1%	0,7%
	Higher, university and +	26,8%		76,2%	19,7%	3,7%	0,3%
	sig.hk		0,06				
Region	Pomurje	5,6%		71,2%	28,8%	0,0%	0,0%
	Podravje	15,9%		69,2%	23,1%	7,4%	0,3%
	Koroška	3,4%		79,4%	16,9%	3,8%	0,0%
	Savinja	12,4%		76,6%	15,8%	3,2%	4,4%
	Zasavje	2,8%		65,2%	32,9%	2,0%	0,0%
	Posavje	3,6%		87,7%	12,3%	0,0%	0,0%
	SE Slovenia	6,8%		67,1%	29,7%	3,2%	0,0%
	Central Slovenia	25,9%		70,2%	23,5%	6,3%	0,0%
	Gorenjska	9,7%		56,9%	31,7%	8,9%	2,5%
	Primorje + Notranjska	2,5%		88,5%	7,3%	4,2%	0,0%
	Goriško	5,6%		65,2%	30,6%	0,0%	4,1%
	Littoral-Karst	5,7%		70,0%	24,7%	5,3%	0,0%
	sig.hk		0,06				



# Genetically modified food

Please, indicate for each of the following items, whether you are (most) concerned; neither concerned nor unconcerned, or not concerned about it.

				I am (most) concerned	I am neither concerned nor unconcerned	I am not concerned	I do not know
Sample							
All	n=	721	721	462	179	73	6
	%	100,0%	100,0%	64,1%	24,9%	10,2%	0,9%
Gender	Male	50,9%		59,9%	25,4%	13,7%	1,1%
	Female	49,1%		68,4%	24,3%	6,5%	0,7%
	sig.hk		0,01				
Age	18 to 34	27,7%		52,8%	31,3%	15,8%	0,0%
	35 to 54	36,9%		67,4%	23,6%	8,7%	0,4%
	55 and +	35,5%		69,4%	21,2%	7,3%	2,1%
	sig.hk		0,00				
Education	Elementary + Vocational	20,5%		67,8%	23,0%	8,8%	0,4%
	Secondary	52,8%		61,7%	25,6%	11,2%	1,5%
	Higher, university and +	26,8%		65,6%	25,0%	9,3%	0,0%
	sig.hk		0,45				
Region	Pomurje	5,6%		53,7%	35,9%	10,4%	0,0%
	Podravje	15,9%		67,3%	21,7%	11,0%	0,0%
	Koroška	3,4%		71,9%	28,1%	0,0%	0,0%
	Savinja	12,4%		69,1%	22,1%	4,3%	4,5%
	Zasavje	2,8%		72,3%	12,7%	10,0%	5,0%
	Posavje	3,6%		62,6%	30,6%	6,8%	0,0%
	SE Slovenia	6,8%		61,6%	30,9%	7,4%	0,0%
	Central Slovenia	25,9%		56,6%	28,8%	14,2%	0,4%
	Gorenjska	9,7%		61,5%	22,8%	15,6%	0,0%
	Primorje + Notranjska	2,5%		72,5%	19,4%	8,1%	0,0%
	Goriško	5,6%		62,9%	26,3%	9,3%	1,5%
	Littoral-Karst	5,7%		85,2%	8,6%	6,2%	0,0%
	sig.hk		0,03				

## Food obtained through new genome editing techniques (e.g. new mutagenesis techniques)

Please, indicate for each of the following items, whether you are (most) concerned; neither concerned nor unconcerned, or not concerned about it.

		Sample		I am (most) concerned	I am neither concerned nor unconcerned	I am not concerned	I do not know
All	n=	721	721	429	175	38	78
	%	100,0%	100,0%	59,5%	24,3%	5,3%	10,9%
Gender	Male	50,9%		56,4%	23,8%	6,8%	13,0%
	Female	49,1%		62,7%	24,8%	3,8%	8,7%
	sig.hk		0,06				
Age	18 to 34	27,7%		45,4%	35,2%	12,9%	6,5%
	35 to 54	36,9%		62,3%	22,3%	2,7%	12,7%
	55 and +	35,5%		67,6%	17,9%	2,1%	12,4%
	sig.hk		0,00				
Education	Elementary + Vocational	20,5%		62,7%	20,5%	3,8%	13,0%
	Secondary	52,8%		60,0%	23,3%	5,5%	11,1%
	Higher, university and +	26,8%		55,6%	29,5%	5,9%	8,9%
	sig.hk		0,42				
Region	Pomurje	5,6%		57,7%	33,4%	0,0%	8,9%
	Podravje	15,9%		65,4%	20,3%	9,0%	5,3%
	Koroška	3,4%		72,8%	5,6%	3,8%	17,9%
	Savinja	12,4%		54,1%	24,0%	4,7%	17,2%
	Zasavje	2,8%		66,6%	4,5%	2,0%	26,9%
	Posavje	3,6%		55,0%	37,2%	2,6%	5,2%
	SE Slovenia	6,8%		60,9%	25,4%	8,5%	5,2%
	Central Slovenia	25,9%		53,8%	29,7%	4,5%	12,0%
	Gorenjska	9,7%		60,3%	23,9%	6,9%	9,0%
	Primorje + Notranjska	2,5%		73,7%	14,7%	8,1%	3,5%
	Goriško	5,6%		57,9%	21,3%	3,7%	17,1%
	Littoral-Karst	5,7%		66,1%	21,9%	3,8%	8,2%
	sig.hk		0,10				

# Cloning of animals for food products

Please, indicate for each of the following items, whether you are (most) concerned; neither concerned nor unconcerned, or not concerned about it.

		Sample		I am (most) concerned	I am neither concerned nor unconcerned	I am not concerned	I do not know
All	n=	721	721	517	120	44	41
	%	100,0%	100,0%	71,7%	16,6%	6,0%	5,6%
Gender	Male	50,9%		65,9%	20,5%	7,7%	5,9%
	Female	49,1%		77,7%	12,6%	4,4%	5,3%
	sig.hk		0,00				
Age	18 to 34	27,7%		64,4%	19,7%	12,1%	3,8%
	35 to 54	36,9%		73,9%	17,5%	4,1%	4,5%
	55 and +	35,5%		75,2%	13,3%	3,3%	8,2%
	sig.hk		0,00				
Education	Elementary + Vocational	20,5%		75,8%	16,1%	5,7%	2,4%
	Secondary	52,8%		72,5%	13,3%	6,8%	7,4%
	Higher, university and +	26,8%		67,0%	23,5%	4,9%	4,6%
	sig.hk		0,02				
Region	Pomurje	5,6%		55,4%	20,2%	14,5%	9,9%
	Podravje	15,9%		74,0%	16,5%	7,1%	2,5%
	Koroška	3,4%		81,5%	5,6%	7,7%	5,2%
	Savinja	12,4%		75,4%	15,8%	1,5%	7,4%
	Zasavje	2,8%		76,8%	14,0%	2,0%	7,3%
	Posavje	3,6%		74,9%	25,1%	0,0%	0,0%
	SE Slovenia	6,8%		73,1%	22,8%	2,8%	1,3%
	Central Slovenia	25,9%		68,7%	17,8%	5,9%	7,5%
	Gorenjska	9,7%		75,7%	13,1%	7,7%	3,5%
	Primorje + Notranjska	2,5%		80,1%	8,3%	8,1%	3,5%
	Goriško	5,6%		63,8%	24,7%	3,4%	8,1%
	Littoral-Karst	5,7%		72,7%	6,3%	12,8%	8,2%
	sig.hk		0,24				

# Nanoingredients in food

Please, indicate for each of the following items, whether you are (most) concerned; neither concerned nor unconcerned, or not concerned about it.

		Sample		I am (most) concerned	I am neither concerned nor unconcerned	I am not concerned	I do not know
All	n=	721	721	411	195	28	87
	%	100,0%	100,0%	57,0%	27,0%	3,9%	12,1%
Gender	Male	50,9%		54,7%	30,4%	3,6%	11,3%
	Female	49,1%		59,4%	23,4%	4,3%	12,9%
	sig.hk		0,21				
Age	18 to 34	27,7%		46,1%	34,1%	9,5%	10,3%
	35 to 54	36,9%		60,4%	28,5%	2,3%	8,8%
	55 and +	35,5%		61,9%	20,0%	1,2%	16,9%
	sig.hk		0,00				
Education	Elementary + Vocational	20,5%		55,7%	30,6%	3,7%	10,0%
	Secondary	52,8%		59,1%	24,3%	4,1%	12,5%
	Higher, university and +	26,8%		53,7%	29,8%	3,8%	12,7%
	sig.hk		0,72				
Region	Pomurje	5,6%		49,0%	29,8%	0,0%	21,2%
	Podravje	15,9%		60,3%	29,7%	2,8%	7,3%
	Koroška	3,4%		57,0%	37,0%	6,1%	0,0%
	Savinja	12,4%		63,2%	20,5%	1,6%	14,7%
	Zasavje	2,8%		72,3%	14,2%	2,0%	11,5%
	Posavje	3,6%		73,6%	18,6%	2,6%	5,3%
	SE Slovenia	6,8%		53,3%	27,7%	3,0%	16,1%
	Central Slovenia	25,9%		49,4%	31,7%	5,6%	13,3%
	Gorenjska	9,7%		55,1%	28,8%	6,2%	9,9%
	Primorje + Notranjska	2,5%		72,5%	19,9%	0,0%	7,7%
	Goriško	5,6%		66,3%	17,0%	0,0%	16,8%
	Littoral-Karst	5,7%		50,1%	24,2%	11,8%	13,8%
	sig.hk		0,14				

## Food obtained from insects

Please, indicate for each of the following items, whether you are (most) concerned; neither concerned nor unconcerned, or not concerned about it.

				I am (most) concerned	I am neither concerned nor unconcerned	I am not concerned	I do not know
		Sample					
All	n=	721	721	423	154	81	63
	%	100,0%	100,0%	58,6%	21,4%	11,3%	8,7%
Gender	Male	50,9%		57,4%	21,4%	13,9%	7,3%
	Female	49,1%		59,9%	21,3%	8,6%	10,1%
		sig.hk	0,10				
Age	18 to 34	27,7%		46,6%	27,1%	20,1%	6,3%
	35 to 54	36,9%		58,7%	24,4%	9,1%	7,8%
	55 and +	35,5%		67,9%	13,8%	6,7%	11,6%
	sig.hk		0,00				
Education	Elementary + Vocational	20,5%		68,3%	17,9%	8,8%	5,0%
	Secondary	52,8%		59,6%	19,7%	11,5%	9,2%
	Higher, university and +	26,8%		50,0%	27,1%	12,3%	10,6%
	sig.hk		0,04				
Region	Pomurje	5,6%		47,1%	26,6%	18,1%	8,2%
	Podravje	15,9%		57,5%	22,4%	12,9%	7,3%
	Koroška	3,4%		62,6%	12,1%	9,0%	16,3%
	Savinja	12,4%		72,0%	17,2%	4,3%	6,4%
	Zasavje	2,8%		59,4%	30,1%	10,5%	0,0%
	Posavje	3,6%		76,7%	17,1%	2,4%	3,8%
	SE Slovenia	6,8%		55,7%	30,0%	9,4%	4,9%
	Central Slovenia	25,9%		49,3%	25,3%	13,4%	12,0%
	Gorenjska	9,7%		64,4%	14,8%	13,3%	7,6%
	Primorje + Notranjska	2,5%		81,2%	8,1%	4,2%	6,5%
	Goriško	5,6%		50,9%	15,4%	15,1%	18,6%
	Littoral-Karst	5,7%		63,5%	21,5%	11,5%	3,5%
		sig.hk	0,09				

## Contaminants in foods, as mercury in fish

Please, indicate for each of the following items, whether you are (most) concerned; neither concerned nor unconcerned, or not concerned about it.

		Sample		I am (most) concerned	I am neither concerned nor unconcerned	I am not concerned	I do not know
All	n=	721	721	555	134	19	14
	%	100,0%	100,0%	77,0%	18,5%	2,6%	1,9%
Gender	Male	50,9%		75,0%	20,0%	3,0%	1,9%
	Female	49,1%		79,0%	17,0%	2,3%	1,8%
	sig.hk		0,65				
Age	18 to 34	27,7%		70,0%	24,1%	4,8%	1,1%
	35 to 54	36,9%		76,0%	19,3%	2,1%	2,6%
	55 and +	35,5%		83,4%	13,3%	1,6%	1,7%
	sig.hk		0,01				
Education	Elementary + Vocational	20,5%		76,3%	19,7%	2,9%	1,1%
	Secondary	52,8%		78,2%	17,1%	2,0%	2,7%
	Higher, university and +	26,8%		74,9%	20,6%	3,7%	0,8%
	sig.hk		0,46				
Region	Pomurje	5,6%		74,6%	23,8%	0,0%	1,6%
	Podravje	15,9%		77,2%	19,8%	3,1%	0,0%
	Koroška	3,4%		78,5%	15,4%	3,8%	2,3%
	Savinja	12,4%		75,8%	21,1%	0,0%	3,1%
	Zasavje	2,8%		69,4%	25,5%	0,0%	5,0%
	Posavje	3,6%		92,3%	5,4%	0,0%	2,3%
	SE Slovenia	6,8%		75,1%	22,1%	2,8%	0,0%
	Central Slovenia	25,9%		80,6%	12,9%	3,2%	3,4%
	Gorenjska	9,7%		69,7%	22,1%	8,2%	0,0%
	Primorje + Notranjska	2,5%		81,8%	18,2%	0,0%	0,0%
	Goriško	5,6%		71,1%	24,8%	0,0%	4,1%
	Littoral-Karst	5,7%		75,9%	20,2%	3,8%	0,0%
	sig.hk		0,30				

# Residues of veterinary medicinal products (antibiotics, hormones) in meat

Please, indicate for each of the following items, whether you are (most) concerned; neither concerned nor unconcerned, or not concerned about it.

		Sample		I am (most) concerned	I am neither concerned nor unconcerned	I am not concerned	I do not know
All	n=	721	721	554	125	32	9
	%	100,0%	100,0%	76,9%	17,4%	4,4%	1,3%
Gender	Male	50,9%		74,1%	19,5%	5,5%	0,9%
	Female	49,1%		79,8%	15,2%	3,3%	1,6%
	sig.hk		0,13				
Age	18 to 34	27,7%		66,8%	22,6%	9,8%	0,7%
	35 to 54	36,9%		77,3%	19,0%	3,3%	0,4%
	55 and +	35,5%		84,3%	11,7%	1,4%	2,5%
	sig.hk		0,00				
Education	Elementary + Vocational	20,5%		76,2%	20,2%	3,6%	0,0%
	Secondary	52,8%		77,8%	16,0%	4,5%	1,7%
	Higher, university and +	26,8%		75,6%	18,3%	4,7%	1,4%
	sig.hk		0,69				
Region	Pomurje	5,6%		72,4%	26,2%	0,0%	1,4%
	Podravje	15,9%		78,0%	19,0%	3,0%	0,0%
	Koroška	3,4%		79,2%	10,7%	7,7%	2,3%
	Savinja	12,4%		79,4%	14,5%	2,9%	3,1%
	Zasavje	2,8%		76,3%	11,8%	6,3%	5,6%
	Posavje	3,6%		94,6%	5,4%	0,0%	0,0%
	SE Slovenia	6,8%		75,7%	22,2%	2,1%	0,0%
	Central Slovenia	25,9%		77,9%	14,5%	6,1%	1,5%
	Gorenjska	9,7%		69,1%	22,2%	8,7%	0,0%
	Primorje + Notranjska	2,5%		79,3%	17,7%	3,1%	0,0%
	Goriško	5,6%		70,0%	24,3%	2,7%	2,9%
	Littoral-Karst	5,7%		76,2%	16,9%	6,9%	0,0%
	sig.hk		0,51				

## Food poisonings through bacteria (e.g. Salmonella in eggs)

Please, indicate for each of the following items, whether you are (most) concerned; neither concerned nor unconcerned, or not concerned about it.

		Sample		I am (most) concerned	I am neither concerned nor unconcerned	I am not concerned	I do not know
All	n=	721	721	474	187	53	7
	%	100,0%	100,0%	65,7%	25,9%	7,4%	1,0%
Gender	Male	50,9%		63,0%	26,9%	9,0%	1,1%
	Female	49,1%		68,5%	24,9%	5,7%	0,9%
	sig.hk		0,28				
Age	18 to 34	27,7%		57,4%	29,3%	11,9%	1,4%
	35 to 54	36,9%		67,3%	25,2%	7,5%	0,0%
	55 and +	35,5%		70,5%	24,0%	3,8%	1,7%
	sig.hk		0,00				
Education	Elementary + Vocational	20,5%		71,7%	22,1%	4,2%	2,0%
	Secondary	52,8%		66,7%	24,7%	8,2%	0,4%
	Higher, university and +	26,8%		59,0%	31,0%	8,5%	1,5%
	sig.hk		0,09				
Region	Pomurje	5,6%		56,1%	35,7%	8,2%	0,0%
	Podravje	15,9%		66,4%	28,9%	4,7%	0,0%
	Koroška	3,4%		71,8%	18,1%	10,1%	0,0%
	Savinja	12,4%		77,1%	16,7%	3,4%	2,9%
	Zasavje	2,8%		53,9%	22,5%	21,9%	1,7%
	Posavje	3,6%		72,8%	27,2%	0,0%	0,0%
	SE Slovenia	6,8%		63,5%	29,7%	6,8%	0,0%
	Central Slovenia	25,9%		60,3%	26,9%	11,5%	1,3%
	Gorenjska	9,7%		66,8%	19,7%	10,9%	2,5%
	Primorje + Notranjska	2,5%		70,2%	25,6%	4,2%	0,0%
	Goriško	5,6%		63,4%	36,6%	0,0%	0,0%
	Littoral-Karst	5,7%		71,4%	24,8%	3,8%	0,0%
	sig.hk		0,14				



# Allergic reactions to foods/drinks

Please, indicate for each of the following items, whether you are (most) concerned; neither concerned nor unconcerned, or not concerned about it.

		Sample		I am (most) concerned	I am neither concerned nor unconcerned	I am not concerned	I do not know
All	n=	721	721	283	293	128	17
	%	100,0%	100,0%	39,2%	40,7%	17,7%	2,3%
Gender	Male	50,9%		37,6%	40,4%	18,4%	3,6%
	Female	49,1%		40,9%	41,0%	17,0%	1,0%
	sig.hk		0,13				
Age	18 to 34	27,7%		26,7%	45,4%	26,9%	1,0%
	35 to 54	36,9%		40,1%	41,2%	16,7%	2,0%
	55 and +	35,5%		48,1%	36,5%	11,7%	3,7%
	sig.hk		0,00				
Education	Elementary + Vocational	20,5%		47,5%	38,1%	11,9%	2,4%
	Secondary	52,8%		40,0%	39,3%	17,7%	2,9%
	Higher, university and +	26,8%		31,1%	45,4%	22,4%	1,0%
	sig.hk		0,02				
Region	Pomurje	5,6%		29,7%	32,1%	26,9%	11,3%
	Podravje	15,9%		40,7%	42,0%	16,3%	0,9%
	Koroška	3,4%		58,8%	24,7%	16,5%	0,0%
	Savinja	12,4%		58,0%	31,0%	7,9%	3,1%
	Zasavje	2,8%		31,8%	30,2%	31,3%	6,7%
	Posavje	3,6%		59,9%	29,2%	10,9%	0,0%
	SE Slovenia	6,8%		50,4%	38,5%	8,3%	2,7%
	Central Slovenia	25,9%		26,2%	46,5%	24,5%	2,8%
	Gorenjska	9,7%		43,2%	38,8%	18,0%	0,0%
	Primorje + Notranjska	2,5%		47,7%	45,0%	7,3%	0,0%
	Goriško	5,6%		31,0%	52,0%	15,6%	1,5%
	Littoral-Karst	5,7%		25,5%	55,4%	19,1%	0,0%
	sig.hk		0,00				

# Genetically modified food

Please, indicate for each of the enumerated items, whether you would consume it, or does it constitute a possibility of better food product development in your opinion, or does it constitute a health risk and whether it is ethically acceptable.

			Would you consume it?				Constitutes a possibility of new, better food product development.				Constitutes a human health risk.				Is ethically acceptable.			
Sample				Yes	No	I don't know		Yes	No	I don't know		Yes	No	I don't know		Yes	No	I don't know
All	n=	721	721	129	396	196	721	201	311	209	721	414	147	161	721	155	324	242
	%	100,0%	100,0%	17,9%	54,9%	27,2%	100,0%	27,9%	43,1%	29,0%	100,0%	57,4%	20,4%	22,3%	100,0%	21,5%	45,0%	33,5%
Gender	Male	50,9%		24,8%	49,2%	26,0%		34,3%	42,6%	23,1%		56,0%	22,7%	21,3%		27,3%	44,3%	28,4%
	Female	49,1%		10,8%	60,8%	28,5%		21,1%	43,7%	35,1%		58,8%	17,9%	23,3%		15,5%	45,6%	38,8%
sig.hk			0,00				0,00				0,27				0,00			
Age	18 to 34	27,7%		26,1%	45,4%	28,4%		41,7%	40,4%	17,9%		60,6%	20,4%	19,0%		33,9%	33,0%	33,1%
	35 to 54	36,9%		14,5%	61,7%	23,8%		23,5%	50,7%	25,8%		61,1%	17,2%	21,7%		17,1%	49,0%	33,9%
	55 and +	35,5%		15,1%	55,1%	29,8%		21,6%	37,4%	40,9%		51,0%	23,6%	25,4%		16,4%	50,1%	33,5%
sig.hk			0,00				0,00				0,11				0,00			
Education	Elementary + Vocational	20,5%		10,9%	66,0%	23,1%		21,6%	52,2%	26,2%		61,9%	15,7%	22,4%		19,2%	45,2%	35,6%
	Secondary	52,8%		18,7%	51,8%	29,5%		28,8%	40,2%	30,9%		54,8%	23,2%	22,1%		20,9%	45,9%	33,2%
	Higher, university and +	26,8%		21,5%	52,5%	26,0%		30,7%	41,7%	27,6%		59,2%	18,1%	22,6%		24,6%	42,8%	32,6%
sig.hk			0,02				0,12				0,32				0,77			
Region	Pomurje	5,6%		17,1%	51,6%	31,3%		31,9%	26,0%	42,0%		41,1%	27,0%	31,9%		19,8%	35,2%	45,0%
	Podravje	15,9%		9,8%	62,9%	27,3%		18,5%	46,7%	34,8%		60,8%	23,9%	15,3%		24,1%	52,7%	23,2%
	Koroška	3,4%		10,1%	59,2%	30,7%		17,6%	62,9%	19,6%		63,3%	15,3%	21,3%		14,2%	64,4%	21,3%
	Savinja	12,4%		18,7%	50,7%	30,6%		23,7%	46,8%	29,6%		59,0%	21,0%	19,9%		15,0%	49,9%	35,0%
	Zasavje	2,8%		12,5%	60,6%	26,9%		17,3%	46,4%	36,3%		65,7%	4,4%	30,0%		14,8%	39,9%	45,3%
	Posavje	3,6%		11,3%	56,3%	32,4%		35,0%	45,4%	19,6%		57,2%	17,8%	25,0%		19,7%	42,3%	38,0%
	SE Slovenia	6,8%		16,5%	60,8%	22,7%		17,5%	47,3%	35,2%		55,9%	21,8%	22,4%		29,5%	36,5%	34,0%
	Central Slovenia	25,9%		25,1%	47,7%	27,2%		36,5%	40,7%	22,9%		52,5%	22,8%	24,7%		20,5%	37,4%	42,1%
	Gorenjska	9,7%		20,5%	61,7%	17,8%		37,7%	36,8%	25,4%		65,1%	19,2%	15,8%		27,2%	48,6%	24,3%
	Primorje + Notranjska	2,5%		13,4%	55,8%	30,9%		27,7%	46,6%	25,7%		49,1%	25,0%	25,9%		23,1%	45,3%	31,7%
	Goriško	5,6%		28,2%	41,0%	30,7%		34,6%	43,8%	21,6%		51,5%	17,4%	31,1%		24,3%	39,0%	36,7%
	Littoral-Karst	5,7%		7,8%	65,6%	26,7%		15,8%	42,1%	42,1%		72,6%	5,2%	22,2%		21,3%	58,5%	20,3%
sig.hk			0,20				0,02				0,31				0,08			

# Food containing nanoingredients

Please, indicate for each of the enumerated items, whether you would consume it, or does it constitute a possibility of better food product development in your opinion, or does it constitute a health risk and whether it is ethically acceptable.

			Would you consume it?				Constitutes a possibility of new, better food product development.				Constitutes a human health risk.				Is ethically acceptable.			
Sample				Yes	No	I don't know		Yes	No	I don't know		Yes	No	I don't know		Yes	No	I don't know
All	n=	721	721	42	368	311	721	105	288	329	721	304	120	297	721	95	276	350
	%	100,0%	100,0%	5,8%	51,1%	43,1%	100,0%	14,5%	39,9%	45,6%	100,0%	42,2%	16,6%	41,2%	100,0%	13,2%	38,3%	48,5%
Gender	Male	50,9%		8,6%	48,8%	42,6%		18,3%	40,4%	41,3%		43,2%	18,6%	38,2%		16,9%	40,5%	42,5%
	Female	49,1%		2,8%	53,5%	43,7%		10,6%	39,4%	50,0%		41,2%	14,5%	44,3%		9,4%	35,9%	54,7%
sig.hk			0,00				0,01				0,16				0,00			
Age	18 to 34	27,7%		8,7%	40,6%	50,7%		18,2%	35,4%	46,4%		40,4%	14,4%	45,1%		15,9%	28,2%	55,9%
	35 to 54	36,9%		4,7%	59,5%	35,8%		13,9%	46,0%	40,1%		49,7%	14,1%	36,2%		14,1%	41,2%	44,7%
	55 and +	35,5%		4,6%	50,5%	44,9%		12,3%	37,1%	50,6%		35,8%	21,0%	43,2%		10,2%	43,1%	46,7%
sig.hk			0,00				0,04				0,01				0,01			
Education	Elementary + Vocational	20,5%		4,0%	53,3%	42,6%		13,6%	45,4%	41,0%		45,9%	17,7%	36,5%		13,5%	35,8%	50,7%
	Secondary	52,8%		5,7%	50,9%	43,4%		14,8%	37,9%	47,3%		41,4%	18,5%	40,1%		13,6%	39,8%	46,5%
	Higher, university and +	26,8%		7,4%	49,6%	43,0%		14,4%	39,6%	46,0%		41,2%	12,0%	46,8%		12,2%	37,2%	50,6%
sig.hk			0,76				0,64				0,18				0,85			
Region	Pomurje	5,6%		4,4%	50,9%	44,8%		5,7%	49,2%	45,1%		38,2%	25,7%	36,1%		16,0%	35,8%	48,1%
	Podravje	15,9%		8,1%	51,0%	40,9%		14,8%	44,8%	40,4%		44,9%	21,1%	33,9%		10,6%	50,2%	39,2%
	Koroška	3,4%		2,2%	41,3%	56,6%		10,3%	36,4%	53,3%		45,2%	16,0%	38,8%		14,3%	34,5%	51,1%
	Savinja	12,4%		6,6%	46,8%	46,6%		19,2%	37,4%	43,4%		36,3%	18,7%	45,0%		12,8%	30,4%	56,8%
	Zasavje	2,8%		2,5%	55,9%	41,6%		4,1%	47,0%	48,9%		56,1%	10,2%	33,7%		7,8%	46,7%	45,5%
	Posavje	3,6%		12,4%	51,2%	36,4%		9,9%	48,4%	41,7%		45,7%	17,8%	36,5%		2,6%	58,1%	39,3%
	SE Slovenia	6,8%		8,2%	59,9%	31,8%		20,3%	45,8%	33,9%		48,3%	18,6%	33,1%		23,7%	42,1%	34,2%
	Central Slovenia	25,9%		4,2%	47,4%	48,5%		15,3%	33,3%	51,4%		40,9%	13,3%	45,8%		11,5%	29,9%	58,6%
	Gorenjska	9,7%		7,0%	54,8%	38,2%		21,2%	35,2%	43,6%		42,0%	15,6%	42,4%		21,3%	36,7%	41,9%
	Primorje + Notranjska	2,5%		2,2%	62,7%	35,1%		17,3%	44,7%	38,0%		48,1%	3,9%	48,0%		15,1%	47,8%	37,2%
	Goriško	5,6%		3,9%	54,1%	42,0%		3,0%	46,5%	50,5%		37,1%	13,8%	49,2%		1,0%	39,9%	59,1%
	Littoral-Karst	5,7%		3,8%	56,6%	39,6%		11,0%	38,2%	50,8%		42,4%	16,0%	41,6%		20,2%	40,7%	39,1%
	sig.hk			0,86				0,35				0,83				0,00		

# Food obtained from cloned animals

Please, indicate for each of the enumerated items, whether you would consume it, or does it constitute a possibility of better food product development in your opinion, or does it constitute a health risk and whether it is ethically acceptable.

			Would you consume it?				Constitutes a possibility of new, better food product development.				Constitutes a human health risk.				Is ethically acceptable.			
Sample				Yes	No	I don't know		Yes	No	I don't know		Yes	No	I don't know		Yes	No	I don't know
All	n=	721	721	79	527	115	721	118	435	168	721	356	158	207	721	111	464	146
	%	100,0%	100,0%	11,0%	73,1%	15,9%	100,0%	16,4%	60,4%	23,3%	100,0%	49,3%	21,9%	28,7%	100,0%	15,4%	64,3%	20,3%
Gender	Male	50,9%		17,6%	64,8%	17,6%		22,0%	53,5%	24,5%		44,8%	25,0%	30,2%		18,5%	59,3%	22,2%
	Female	49,1%		4,1%	81,7%	14,2%		10,5%	67,5%	21,9%		54,0%	18,8%	27,2%		12,1%	69,5%	18,4%
sig.hk			0,00				0,00				0,03				0,01			
Age	18 to 34	27,7%		16,8%	65,0%	18,1%		19,1%	57,5%	23,4%		48,9%	19,6%	31,5%		19,0%	58,3%	22,7%
	35 to 54	36,9%		8,2%	81,0%	10,8%		13,2%	68,6%	18,2%		56,0%	21,2%	22,8%		12,9%	71,7%	15,3%
	55 and +	35,5%		9,3%	71,2%	19,5%		17,5%	54,1%	28,4%		42,8%	24,4%	32,8%		15,1%	61,3%	23,6%
sig.hk			0,00				0,01				0,02				0,02			
Education	Elementary + Vocational	20,5%		6,5%	75,6%	17,9%		12,8%	70,4%	16,8%		53,0%	23,5%	23,5%		14,6%	63,3%	22,2%
	Secondary	52,8%		11,2%	73,8%	15,0%		18,1%	56,8%	25,1%		49,1%	21,6%	29,3%		15,1%	65,6%	19,3%
	Higher, university and +	26,8%		14,1%	69,7%	16,2%		15,7%	59,6%	24,7%		47,4%	21,1%	31,6%		16,6%	62,7%	20,7%
sig.hk			0,24				0,08				0,59				0,92			
Region	Pomurje	5,6%		9,7%	66,7%	23,6%		17,9%	47,3%	34,8%		38,1%	25,0%	36,9%		18,6%	55,9%	25,5%
	Podravje	15,9%		16,7%	68,1%	15,2%		21,6%	62,1%	16,4%		47,8%	28,0%	24,2%		18,7%	65,0%	16,3%
	Koroška	3,4%		3,5%	74,7%	21,9%		9,3%	60,2%	30,5%		55,6%	18,8%	25,6%		3,7%	66,7%	29,7%
	Savinja	12,4%		8,0%	79,7%	12,3%		14,8%	64,9%	20,3%		51,7%	20,8%	27,6%		12,0%	67,3%	20,7%
	Zasavje	2,8%		2,5%	77,7%	19,8%		4,1%	70,2%	25,6%		60,5%	12,7%	26,8%		10,6%	61,9%	27,5%
	Posavje	3,6%		14,7%	78,4%	6,8%		14,5%	78,2%	7,3%		65,9%	20,5%	13,6%		12,2%	70,5%	17,3%
	SE Slovenia	6,8%		12,4%	76,8%	10,8%		23,5%	59,4%	17,1%		50,0%	30,5%	19,5%		23,5%	56,5%	20,0%
	Central Slovenia	25,9%		12,3%	73,1%	14,6%		14,2%	61,3%	24,5%		45,0%	24,8%	30,2%		14,5%	68,1%	17,5%
	Gorenjska	9,7%		9,2%	71,8%	19,1%		14,1%	59,4%	26,5%		57,2%	16,8%	26,0%		20,3%	60,4%	19,3%
	Primorje + Notranjska	2,5%		13,5%	74,3%	12,2%		6,8%	54,0%	39,1%		43,0%	7,4%	49,6%		23,7%	46,5%	29,7%
	Goriško	5,6%		8,8%	68,4%	22,8%		20,4%	46,2%	33,4%		44,7%	14,6%	40,7%		6,2%	54,2%	39,6%
	Littoral-Karst	5,7%		5,3%	74,2%	20,5%		20,4%	58,1%	21,5%		52,9%	10,1%	37,0%		13,0%	76,8%	10,3%
sig.hk			0,68				0,21				0,16				0,13			

# Food obtained from insects

Please, indicate for each of the enumerated items, whether you would consume it, or does it constitute a possibility of better food product development in your opinion, or does it constitute a health risk and whether it is ethically acceptable.

			Would you consume it?				Constitutes a possibility of new, better food product development.				Constitutes a human health risk.				Is ethically acceptable.			
Sample				Yes	No	I don't know		Yes	No	I don't know		Yes	No	I don't know		Yes	No	I don't know
All	n=	721	721	70	556	94	721	145	377	199	721	247	221	253	721	162	365	194
	%	100,0%	100,0%	9,7%	77,2%	13,1%	100,0%	20,1%	52,3%	27,6%	100,0%	34,2%	30,6%	35,2%	100,0%	22,5%	50,7%	26,9%
Gender	Male	50,9%		13,2%	72,1%	14,7%		21,4%	50,5%	28,1%		35,5%	30,0%	34,5%		27,8%	47,2%	25,1%
	Female	49,1%		6,2%	82,4%	11,4%		18,7%	54,3%	27,0%		32,9%	31,3%	35,8%		16,9%	54,3%	28,8%
	sig.hk		0,00				0,54				0,77				0,00			
Age	18 to 34	27,7%		13,4%	69,5%	17,1%		26,1%	47,4%	26,5%		28,3%	35,8%	35,9%		25,9%	42,7%	31,4%
	35 to 54	36,9%		10,3%	77,7%	12,0%		23,2%	55,5%	21,3%		42,4%	28,6%	29,0%		23,1%	51,7%	25,3%
	55 and +	35,5%		6,2%	82,6%	11,1%		12,2%	53,0%	34,9%		30,2%	28,8%	41,0%		19,1%	55,9%	25,0%
	sig.hk		0,02				0,00				0,00				0,08			
Education	Elementary + Vocational	20,5%		1,7%	78,0%	20,2%		11,1%	57,3%	31,7%		42,6%	23,8%	33,6%		10,6%	61,3%	28,1%
	Secondary	52,8%		10,5%	79,0%	10,5%		21,5%	51,3%	27,2%		33,0%	32,8%	34,2%		24,6%	48,8%	26,6%
	Higher, university and +	26,8%		14,2%	73,4%	12,4%		24,1%	50,6%	25,3%		30,6%	31,4%	38,0%		27,2%	46,5%	26,4%
	sig.hk		0,00				0,04				0,12				0,00			
Region	Pomurje	5,6%		7,8%	71,3%	20,9%		16,6%	45,3%	38,1%		23,6%	35,8%	40,6%		26,9%	48,3%	24,8%
	Podravje	15,9%		7,6%	79,4%	13,0%		15,3%	63,0%	21,7%		31,0%	39,3%	29,7%		16,5%	58,7%	24,8%
	Koroška	3,4%		9,6%	70,3%	20,1%		14,0%	65,0%	21,0%		31,5%	41,1%	27,4%		9,6%	64,9%	25,6%
	Savinja	12,4%		7,0%	83,5%	9,5%		20,7%	61,0%	18,3%		41,8%	25,3%	32,9%		12,8%	61,5%	25,7%
	Zasavje	2,8%		8,6%	68,2%	23,3%		12,2%	57,5%	30,3%		38,9%	24,6%	36,5%		19,2%	57,8%	23,0%
	Posavje	3,6%		4,9%	86,1%	9,0%		11,4%	54,9%	33,8%		35,0%	28,8%	36,2%		13,1%	61,4%	25,5%
	SE Slovenia	6,8%		14,0%	79,1%	6,9%		27,1%	49,2%	23,7%		51,3%	30,3%	18,4%		36,0%	44,1%	19,8%
	Central Slovenia	25,9%		14,6%	73,8%	11,6%		27,9%	45,1%	27,0%		27,1%	32,5%	40,4%		29,6%	42,8%	27,6%
	Gorenjska	9,7%		2,8%	78,9%	18,4%		12,9%	50,8%	36,3%		43,2%	23,3%	33,5%		22,8%	52,4%	24,8%
	Primorje + Notranjska	2,5%		10,9%	60,0%	29,1%		7,8%	56,4%	35,8%		24,5%	25,5%	50,1%		22,0%	45,4%	32,6%
	Goriško	5,6%		9,7%	80,1%	10,2%		19,3%	44,0%	36,7%		32,6%	23,2%	44,3%		19,8%	31,8%	48,4%
	Littoral-Karst	5,7%		11,6%	80,7%	7,7%		23,3%	44,7%	32,1%		38,3%	24,8%	36,9%		24,5%	49,2%	26,3%
	sig.hk		0,21				0,06				0,11				0,02			

# European Food Safety Authority

Do you know or have you heard of the European Food Safety Authority (EFSA) established in 2002?

		Sample		Yes, I do know it	I have heard of it, but I do not know it	I do not know it, I have never heard of it
All	n=	721	721	88	448	185
	%	100,0%	100,0%	12,2%	62,1%	25,7%
Gender	Male	50,9%		11,6%	61,7%	26,7%
	Female	49,1%		12,8%	62,6%	24,6%
	sig.hk		0,76			
Age	18 to 34	27,7%		15,8%	53,9%	30,3%
	35 to 54	36,9%		13,8%	55,9%	30,3%
	55 and +	35,5%		7,8%	75,0%	17,3%
	sig.hk		0,00			
Education	Elementary + Vocational	20,5%		8,6%	62,1%	29,3%
	Secondary	52,8%		10,9%	64,7%	24,5%
	Higher, university and +	26,8%		17,5%	57,7%	24,7%
	sig.hk		0,07			
Region	Pomurje	5,6%		11,3%	57,5%	31,2%
	Podravje	15,9%		6,2%	68,2%	25,5%
	Koroška	3,4%		12,5%	54,8%	32,6%
	Savinja	12,4%		15,7%	65,9%	18,5%
	Zasavje	2,8%		21,2%	65,5%	13,3%
	Posavje	3,6%		19,2%	63,3%	17,5%
	SE Slovenia	6,8%		11,3%	63,5%	25,2%
	Central Slovenia	25,9%		10,9%	63,3%	25,8%
	Gorenjska	9,7%		18,2%	55,8%	26,0%
	Primorje + Notranjska	2,5%		24,4%	47,6%	28,0%
	Goriško	5,6%		4,9%	65,8%	29,3%
	Littoral-Karst	5,7%		11,6%	50,2%	38,2%
	sig.hk		0,36			

## CONSUMER ORGANISATIONS

Please, evaluate with a mark between 1 and 5 each of the following sources as to how much **CONFIDENCE** you have in it, as to dissemination of information on food safety and the possible risks, with mark 1 meaning that you do not at all have any confidence in the source of information, and mark 5 meaning that you have full confidence in the source of information.

		Sample		No confidence at all	No confidence	Neither - Nor	I do have confidence	I have full confidence	Average mark	
All	n=	721	721	30	85	283	299	23	721	3,28
	%	100,0%	100,0%	4,2%	11,8%	39,3%	41,5%	3,2%	100,0%	
Gender	Male	50,9%		4,2%	12,5%	35,8%	45,1%	2,3%		3,29
	Female	49,1%		4,2%	11,0%	43,0%	37,8%	4,1%		3,27
	sig.hk		0,15						0,44	
Age	18 to 34	27,7%		3,2%	10,3%	41,9%	42,2%	2,4%		3,30
	35 to 54	36,9%		4,8%	12,2%	40,7%	39,4%	2,8%		3,23
	55 and +	35,5%		4,3%	12,4%	35,8%	43,2%	4,2%		3,30
	sig.hk		0,83						0,36	
Education	Elementary + Vocational	20,5%		7,4%	10,3%	50,3%	30,4%	1,5%		3,08
	Secondary	52,8%		3,9%	13,1%	35,9%	44,7%	2,4%		3,28
	Higher, university and +	26,8%		2,2%	9,8%	37,6%	44,4%	6,0%		3,42
	sig.hk		0,00						0,00	
Region	Pomurje	5,6%		0,0%	3,7%	45,4%	50,9%	0,0%		3,47
	Podravje	15,9%		2,8%	8,0%	55,0%	31,8%	2,3%		3,23
	Koroška	3,4%		19,2%	11,6%	35,6%	29,6%	4,0%		2,87
	Savinja	12,4%		5,6%	14,7%	39,9%	36,9%	3,0%		3,17
	Zasavje	2,8%		6,6%	0,0%	59,5%	33,9%	0,0%		3,21
	Posavje	3,6%		0,0%	14,9%	41,2%	42,4%	1,5%		3,30
	SE Slovenia	6,8%		6,7%	12,5%	44,3%	30,0%	6,6%		3,17
	Central Slovenia	25,9%		5,1%	11,1%	31,4%	48,4%	4,1%		3,35
	Gorenjska	9,7%		2,8%	14,0%	36,8%	44,5%	2,0%		3,29
	Primorje + Notranjska	2,5%		0,0%	7,8%	33,6%	49,5%	9,2%		3,60
	Goriško	5,6%		3,4%	12,1%	27,7%	55,0%	1,8%		3,40
	Littoral-Karst	5,7%		0,0%	27,8%	27,7%	40,7%	3,8%		3,21
	sig.hk		0,00						0,21	

## SCIENTISTS

Please, evaluate with a mark between 1 and 5 each of the following sources as to how much **CONFIDENCE** you have in it, as to dissemination of information on food safety and the possible risks, with mark 1 meaning that you do not at all have any confidence in the source of information, and mark 5 meaning that you have full confidence in the source of information.

		Sample		No confidence at all	No confidence	Neither - Nor	I do have confidence	I have full confidence	Average mark	
All	n=	721	721	18	45	229	363	66	721	3,57
	%	100,0%	100,0%	2,5%	6,2%	31,8%	50,4%	9,1%	100,0%	
Gender	Male	50,9%		3,2%	6,3%	32,2%	49,2%	9,2%		3,55
	Female	49,1%		1,8%	6,2%	31,4%	51,6%	9,0%		3,60
	sig.hk		0,79						0,99	
Age	18 to 34	27,7%		2,1%	5,0%	25,7%	52,3%	14,9%		3,73
	35 to 54	36,9%		3,1%	4,5%	42,0%	44,5%	5,9%		3,46
	55 and +	35,5%		2,2%	9,1%	25,9%	55,0%	7,8%		3,57
	sig.hk		0,00						0,00	
Education	Elementary + Vocational	20,5%		5,6%	7,2%	45,4%	37,8%	4,0%		3,27
	Secondary	52,8%		1,2%	7,0%	29,2%	51,8%	10,8%		3,64
	Higher, university and +	26,8%		2,7%	3,6%	26,6%	57,8%	9,2%		3,67
	sig.hk		0,00						0,00	
Region	Pomurje	5,6%		0,0%	2,2%	25,0%	72,8%	0,0%		3,71
	Podravje	15,9%		2,9%	8,2%	33,2%	47,6%	8,1%		3,50
	Koroška	3,4%		13,1%	16,2%	43,9%	26,7%	0,0%		2,84
	Savinja	12,4%		1,2%	4,1%	39,6%	45,5%	9,6%		3,58
	Zasavje	2,8%		0,0%	2,3%	54,5%	40,7%	2,5%		3,43
	Posavje	3,6%		2,3%	14,0%	10,6%	58,3%	14,8%		3,69
	SE Slovenia	6,8%		4,5%	1,2%	29,7%	44,8%	19,8%		3,74
	Central Slovenia	25,9%		2,5%	3,4%	38,2%	46,8%	9,1%		3,57
	Gorenjska	9,7%		2,2%	8,4%	25,2%	57,0%	7,2%		3,59
	Primorje + Notranjska	2,5%		0,0%	3,5%	26,5%	70,0%	0,0%		3,66
	Goriško	5,6%		3,4%	10,1%	19,9%	52,3%	14,2%		3,64
	Littoral-Karst	5,7%		0,0%	13,0%	10,6%	62,6%	13,8%		3,77
	sig.hk		0,00						0,20	



# EUROPEAN FOOD SAFETY AUTHORITY

Please, evaluate with a mark between 1 and 5 each of the following sources as to how much CONFIDENCE you have in it, as to dissemination of information on food safety and the possible risks, with mark 1 meaning that you do not at all have any confidence in the source of information, and mark 5 meaning that you have full confidence in the source of information.

		Sample		No confidence at all	No confidence	Neither - Nor	I do have confidence	I have full confidence	Average mark	
All	n=	721	721	18	64	284	309	46	721	3,42
	%	100,0%	100,0%	2,5%	8,8%	39,4%	42,9%	6,4%	100,0%	
Gender	Male	50,9%		2,1%	8,4%	39,9%	42,5%	7,1%		3,44
	Female	49,1%		3,0%	9,3%	38,8%	43,3%	5,6%		3,39
	sig.hk		0,82						0,47	
Age	18 to 34	27,7%		1,4%	7,2%	30,0%	50,4%	11,0%		3,62
	35 to 54	36,9%		4,0%	11,0%	46,0%	35,9%	3,2%		3,23
	55 and +	35,5%		1,9%	7,8%	39,8%	44,4%	6,1%		3,45
	sig.hk		0,00						0,00	
Education	Elementary + Vocational	20,5%		4,8%	11,3%	41,6%	36,6%	5,6%		3,27
	Secondary	52,8%		1,5%	9,9%	37,0%	44,4%	7,1%		3,46
	Higher, university and +	26,8%		2,8%	4,3%	42,2%	45,2%	5,5%		3,46
	sig.hk		0,07						0,12	
Region	Pomurje	5,6%		0,0%	5,6%	31,0%	56,6%	6,8%		3,65
	Podravje	15,9%		0,5%	17,9%	29,9%	45,0%	6,6%		3,39
	Koroška	3,4%		14,4%	4,8%	34,8%	45,9%	0,0%		3,12
	Savinja	12,4%		1,3%	2,6%	41,9%	41,9%	12,4%		3,61
	Zasavje	2,8%		0,0%	0,0%	58,9%	41,1%	0,0%		3,41
	Posavje	3,6%		0,0%	9,5%	47,6%	37,6%	5,3%		3,39
	SE Slovenia	6,8%		3,2%	9,1%	40,3%	43,8%	3,6%		3,35
	Central Slovenia	25,9%		4,1%	7,4%	40,7%	44,1%	3,7%		3,36
	Gorenjska	9,7%		1,7%	14,3%	44,9%	29,8%	9,3%		3,31
	Primorje + Notranjska	2,5%		0,0%	11,3%	38,3%	50,5%	0,0%		3,39
	Goriško	5,6%		3,4%	5,5%	33,1%	49,5%	8,6%		3,54
	Littoral-Karst	5,7%		2,9%	5,4%	46,2%	34,6%	10,8%		3,45
	sig.hk		0,01						0,68	

# NATIONAL MINISTRIES AND INSPECTION SERVICES

Please, evaluate with a mark between 1 and 5 each of the following sources as to how much CONFIDENCE you have in it, as to dissemination of information on food safety and the possible risks, with mark 1 meaning that you do not at all have any confidence in the source of information, and mark 5 meaning that you have full confidence in the source of information.

		Sample		No confidence at all	No confidence	Neither - Nor	I do have confidence	I have full confidence	Average mark	
All	n=	721	721	45	151	279	224	22	721	3,04
	%	100,0%	100,0%	6,2%	20,9%	38,8%	31,1%	3,0%	100,0%	
Gender	Male	50,9%		6,1%	21,4%	38,8%	30,0%	3,7%		3,04
	Female	49,1%		6,4%	20,3%	38,8%	32,3%	2,2%		3,04
	sig.hk		0,78						0,25	
Age	18 to 34	27,7%		4,1%	16,5%	38,7%	35,6%	5,0%		3,21
	35 to 54	36,9%		11,6%	23,1%	38,2%	25,0%	2,1%		2,83
	55 and +	35,5%		2,3%	22,0%	39,4%	34,0%	2,4%		3,12
	sig.hk		0,00						0,00	
Education	Elementary + Vocational	20,5%		9,8%	14,7%	48,9%	25,3%	1,2%		2,93
	Secondary	52,8%		4,9%	23,8%	34,1%	33,2%	4,0%		3,07
	Higher, university and +	26,8%		6,2%	19,4%	40,1%	31,9%	2,4%		3,05
	sig.hk		0,01						0,31	
Region	Pomurje	5,6%		1,4%	14,5%	39,2%	35,1%	9,8%		3,37
	Podravje	15,9%		2,5%	25,3%	32,8%	36,4%	3,0%		3,12
	Koroška	3,4%		17,9%	42,4%	32,1%	7,6%	0,0%		2,29
	Savinja	12,4%		4,9%	16,4%	50,0%	25,8%	2,9%		3,05
	Zasavje	2,8%		0,0%	23,8%	53,5%	22,7%	0,0%		2,99
	Posavje	3,6%		2,3%	28,1%	39,5%	24,8%	5,3%		3,03
	SE Slovenia	6,8%		8,7%	20,9%	39,5%	30,0%	1,0%		2,94
	Central Slovenia	25,9%		10,3%	17,7%	35,9%	33,6%	2,4%		3,00
	Gorenjska	9,7%		4,5%	29,7%	37,4%	27,3%	1,0%		2,91
	Primorje + Notranjska	2,5%		10,9%	14,5%	40,6%	34,1%	0,0%		2,98
	Goriško	5,6%		4,9%	8,5%	46,9%	37,1%	2,5%		3,24
	Littoral-Karst	5,7%		3,8%	20,1%	32,6%	35,5%	8,0%		3,24
	sig.hk		0,03						0,18	

# MEDIA

Please, evaluate with a mark between 1 and 5 each of the following sources as to how much **CONFIDENCE** you have in it, as to dissemination of information on food safety and the possible risks, with mark 1 meaning that you do not at all have any confidence in the source of information, and mark 5 meaning that you have full confidence in the source of information.

		Sample		No confidence at all	No confidence	Neither - Nor	I do have confidence	I have full confidence	Average mark	
All	n=	721	721	126	198	301	92	4	721	2,52
	%	100,0%	100,0%	17,4%	27,5%	41,7%	12,8%	0,6%	100,0%	
Gender	Male	50,9%		17,1%	28,0%	40,5%	14,1%	0,3%		2,52
	Female	49,1%		17,8%	26,9%	43,0%	11,4%	0,9%		2,51
	sig.hk		0,60						0,54	
Age	18 to 34	27,7%		21,2%	30,6%	40,1%	8,0%	0,0%		2,35
	35 to 54	36,9%		21,1%	24,1%	39,5%	14,7%	0,6%		2,49
	55 and +	35,5%		10,6%	28,5%	45,3%	14,5%	1,0%		2,67
	sig.hk		0,01						0,00	
Education	Elementary + Vocational	20,5%		22,7%	21,2%	42,8%	13,3%	0,0%		2,47
	Secondary	52,8%		15,8%	28,5%	42,6%	12,1%	1,0%		2,54
	Higher, university and +	26,8%		16,7%	30,2%	39,0%	13,9%	0,2%		2,51
	sig.hk		0,33						0,51	
Region	Pomurje	5,6%		6,7%	29,4%	48,6%	13,8%	1,6%		2,74
	Podravje	15,9%		13,9%	33,9%	39,2%	13,0%	0,0%		2,51
	Koroška	3,4%		30,9%	39,2%	19,7%	8,9%	1,3%		2,11
	Savinja	12,4%		16,0%	24,4%	44,1%	15,5%	0,0%		2,59
	Zasavje	2,8%		29,2%	14,2%	45,1%	11,6%	0,0%		2,39
	Posavje	3,6%		14,4%	24,5%	49,4%	11,7%	0,0%		2,58
	SE Slovenia	6,8%		28,1%	20,9%	34,0%	17,0%	0,0%		2,40
	Central Slovenia	25,9%		19,9%	27,3%	39,3%	12,6%	0,9%		2,47
	Gorenjska	9,7%		17,1%	25,5%	50,1%	7,3%	0,0%		2,48
	Primorje + Notranjska	2,5%		6,2%	21,4%	65,1%	7,3%	0,0%		2,74
	Goriško	5,6%		16,1%	31,2%	39,3%	13,5%	0,0%		2,50
	Littoral-Karst	5,7%		11,8%	26,7%	41,9%	15,9%	3,8%		2,73
	sig.hk		0,49						0,91	

# FOOD INDUSTRY

Please, evaluate with a mark between 1 and 5 each of the following sources as to how much CONFIDENCE you have in it, as to dissemination of information on food safety and the possible risks, with mark 1 meaning that you do not at all have any confidence in the source of information, and mark 5 meaning that you have full confidence in the source of information.

		Sample		No confidence at all	No confidence	Neither - Nor	I do have confidence	I have full confidence	Average mark	
All	n=	721	721	91	188	339	99	4	721	2,64
	%	100,0%	100,0%	12,6%	26,1%	47,0%	13,8%	0,6%	100,0%	
Gender	Male	50,9%		12,7%	25,9%	45,7%	15,7%	0,0%		2,64
	Female	49,1%		12,6%	26,3%	48,2%	11,7%	1,2%		2,63
	sig.hk		0,16						0,59	
Age	18 to 34	27,7%		12,1%	25,3%	44,6%	17,6%	0,4%		2,69
	35 to 54	36,9%		16,4%	25,4%	44,9%	12,0%	1,3%		2,56
	55 and +	35,5%		9,1%	27,4%	50,9%	12,6%	0,0%		2,67
	sig.hk		0,08						0,66	
Education	Elementary + Vocational	20,5%		15,4%	19,0%	50,9%	13,4%	1,2%		2,66
	Secondary	52,8%		10,2%	28,0%	47,3%	14,2%	0,4%		2,67
	Higher, university and +	26,8%		15,6%	27,9%	42,8%	13,4%	0,4%		2,55
	sig.hk		0,24						0,18	
Region	Pomurje	5,6%		3,5%	27,1%	40,1%	29,3%	0,0%		2,95
	Podravje	15,9%		7,4%	27,7%	53,4%	11,6%	0,0%		2,69
	Koroška	3,4%		42,0%	31,0%	20,3%	6,7%	0,0%		1,92
	Savinja	12,4%		11,8%	26,7%	48,0%	13,5%	0,0%		2,63
	Zasavje	2,8%		15,4%	26,0%	34,9%	23,7%	0,0%		2,67
	Posavje	3,6%		2,3%	38,5%	36,6%	22,6%	0,0%		2,79
	SE Slovenia	6,8%		6,5%	29,5%	46,4%	17,6%	0,0%		2,75
	Central Slovenia	25,9%		19,7%	20,8%	44,2%	14,3%	1,0%		2,56
	Gorenjska	9,7%		12,6%	22,9%	51,5%	12,0%	1,0%		2,66
	Primorje + Notranjska	2,5%		7,8%	35,3%	53,9%	3,1%	0,0%		2,52
	Goriško	5,6%		6,9%	28,5%	52,5%	12,1%	0,0%		2,70
	Littoral-Karst	5,7%		8,7%	27,3%	59,3%	0,9%	3,8%		2,64
	sig.hk		0,00						0,20	

# Activities of the European Food Safety Authority

Please, evaluate with a mark between 1 and 5 each of the following items as to how efficiently it contributes through its activities to food safety, with mark 1 meaning that it does not contribute at all, and mark 5 meaning that it does contribute to a high degree to food safety.

		Sample		Does not contribute at all	Does not contribute	Neither - Nor	Does contribute	Highly contributes	Average mark	
All	n=	721	721	15	51	261	364	31	721	3,48
	%	100,0%	100,0%	2,0%	7,0%	36,1%	50,5%	4,3%	100,0%	
Gender	Male	50,9%		1,5%	5,7%	35,1%	52,2%	5,4%		3,54
	Female	49,1%		2,5%	8,4%	37,2%	48,7%	3,2%		3,42
	sig.hk		0,24						0,24	
Age	18 to 34	27,7%		1,5%	5,3%	29,9%	53,1%	10,1%		3,65
	35 to 54	36,9%		2,9%	9,4%	39,0%	47,2%	1,5%		3,35
	55 and +	35,5%		1,6%	5,9%	38,0%	51,8%	2,7%		3,48
	sig.hk		0,00						0,00	
Education	Elementary + Vocational	20,5%		4,9%	9,4%	33,5%	50,8%	1,5%		3,35
	Secondary	52,8%		0,9%	5,2%	38,5%	49,9%	5,6%		3,54
	Higher, university and +	26,8%		2,2%	8,4%	33,5%	51,9%	4,1%		3,47
	sig.hk		0,03						0,05	
Region	Pomurje	5,6%		0,0%	1,3%	31,5%	53,8%	13,3%		3,79
	Podravje	15,9%		1,6%	11,8%	37,2%	45,7%	3,7%		3,38
	Koroška	3,4%		10,1%	4,3%	40,4%	45,2%	0,0%		3,21
	Savinja	12,4%		0,0%	3,8%	39,9%	54,4%	1,8%		3,54
	Zasavje	2,8%		0,0%	0,0%	27,2%	68,4%	4,4%		3,77
	Posavje	3,6%		2,3%	6,8%	24,7%	66,2%	0,0%		3,55
	SE Slovenia	6,8%		0,0%	6,1%	41,8%	50,8%	1,3%		3,47
	Central Slovenia	25,9%		3,4%	9,6%	34,0%	49,2%	3,8%		3,40
	Gorenjska	9,7%		0,9%	6,2%	44,9%	42,4%	5,6%		3,46
	Primorje + Notranjska	2,5%		0,0%	7,8%	18,1%	64,8%	9,3%		3,76
	Goriško	5,6%		6,9%	3,8%	40,0%	43,1%	6,3%		3,38
	Littoral-Karst	5,7%		0,0%	5,2%	30,0%	56,8%	8,0%		3,68
	sig.hk		0,06						0,09	

# Laws of the European Union on food safety

Please, evaluate with a mark between 1 and 5 each of the following items as to how efficiently it contributes through its activities to food safety, with mark 1 meaning that it does not contribute at all, and mark 5 meaning that it does contribute to a high degree to food safety.

		Sample		Does not contribute at all	Does not contribute	Neither - Nor	Does contribute	Highly contributes	Average mark	
All	n=	721	721	13	41	237	380	50	721	3,57
	%	100,0%	100,0%	1,7%	5,7%	32,9%	52,7%	7,0%	100,0%	
Gender	Male	50,9%		1,2%	6,5%	31,2%	52,8%	8,3%		3,60
	Female	49,1%		2,3%	4,9%	34,6%	52,6%	5,6%		3,54
	sig.hk		0,35						0,30	
Age	18 to 34	27,7%		1,3%	2,5%	25,2%	56,3%	14,7%		3,81
	35 to 54	36,9%		2,6%	9,5%	35,8%	49,9%	2,2%		3,40
	55 and +	35,5%		1,1%	4,3%	35,9%	52,8%	5,9%		3,58
	sig.hk		0,00						0,00	
Education	Elementary + Vocational	20,5%		4,2%	5,1%	35,0%	47,2%	8,5%		3,51
	Secondary	52,8%		0,5%	5,4%	33,1%	54,1%	6,9%		3,62
	Higher, university and +	26,8%		2,3%	6,5%	30,7%	54,3%	6,2%		3,56
	sig.hk		0,17						0,15	
Region	Pomurje	5,6%		0,0%	0,0%	24,3%	66,2%	9,5%		3,85
	Podravje	15,9%		1,6%	7,6%	39,8%	46,4%	4,6%		3,45
	Koroška	3,4%		10,1%	19,8%	27,3%	42,8%	0,0%		3,03
	Savinja	12,4%		1,2%	2,6%	37,2%	52,5%	6,4%		3,60
	Zasavje	2,8%		0,0%	6,0%	23,2%	64,5%	6,3%		3,71
	Posavje	3,6%		0,0%	9,1%	10,7%	63,7%	16,5%		3,88
	SE Slovenia	6,8%		0,0%	7,3%	41,3%	48,0%	3,3%		3,47
	Central Slovenia	25,9%		2,8%	5,0%	27,0%	58,1%	7,1%		3,62
	Gorenjska	9,7%		0,9%	6,9%	37,8%	43,3%	11,2%		3,57
	Primorje + Notranjska	2,5%		0,0%	10,4%	23,0%	54,7%	11,9%		3,68
	Goriško	5,6%		3,4%	0,8%	43,1%	48,4%	4,3%		3,50
	Littoral-Karst	5,7%		0,0%	4,0%	37,6%	50,4%	8,0%		3,62
	sig.hk		0,03						0,06	

# Activities of the Slovenian Ministries and Inspection Services

Please, evaluate with a mark between 1 and 5 each of the following items as to how efficiently it contributes through its activities to food safety, with mark 1 meaning that it does not contribute at all, and mark 5 meaning that it does contribute to a high degree to food safety.

		Sample		Does not contribute at all	Does not contribute	Neither - Nor	Does contribute	Highly contributes	Average mark	
All	n=	721	721	46	117	282	258	17	721	3,11
	%	100,0%	100,0%	6,4%	16,3%	39,1%	35,8%	2,4%	100,0%	
Gender	Male	50,9%		7,0%	15,3%	37,0%	38,3%	2,3%		3,14
	Female	49,1%		5,8%	17,3%	41,3%	33,2%	2,4%		3,09
	sig.hk		0,56						0,25	
Age	18 to 34	27,7%		6,4%	11,8%	42,0%	34,6%	5,2%		3,20
	35 to 54	36,9%		9,0%	18,6%	38,6%	32,4%	1,4%		2,99
	55 and +	35,5%		3,8%	17,4%	37,4%	40,2%	1,2%		3,18
	sig.hk		0,01						0,06	
Education	Elementary + Vocational	20,5%		10,0%	18,7%	34,9%	36,5%	0,0%		2,98
	Secondary	52,8%		5,8%	15,6%	41,8%	33,8%	3,1%		3,13
	Higher, university and +	26,8%		5,2%	15,3%	37,2%	39,5%	2,8%		3,20
	sig.hk		0,18						0,06	
Region	Pomurje	5,6%		1,4%	23,5%	33,3%	34,7%	7,1%		3,23
	Podravje	15,9%		3,4%	17,1%	41,6%	36,4%	1,4%		3,15
	Koroška	3,4%		26,0%	14,2%	47,2%	12,6%	0,0%		2,46
	Savinja	12,4%		6,9%	17,1%	43,8%	32,3%	0,0%		3,01
	Zasavje	2,8%		0,0%	23,6%	41,4%	24,8%	10,2%		3,22
	Posavje	3,6%		2,3%	13,5%	22,7%	57,0%	4,5%		3,48
	SE Slovenia	6,8%		7,9%	8,8%	46,1%	35,9%	1,3%		3,14
	Central Slovenia	25,9%		7,8%	16,3%	35,7%	37,6%	2,6%		3,11
	Gorenjska	9,7%		6,4%	14,3%	44,6%	32,5%	2,1%		3,09
	Primorje + Notranjska	2,5%		7,8%	15,1%	34,3%	40,2%	2,6%		3,15
	Goriško	5,6%		8,5%	18,0%	35,5%	38,0%	0,0%		3,03
	Littoral-Karst	5,7%		2,4%	15,9%	35,5%	41,5%	4,6%		3,30
	sig.hk		0,12						0,19	

## Activities of Non-Governmental Organisations

Please, evaluate with a mark between 1 and 5 each of the following items as to how efficiently it contributes through its activities to food safety, with mark 1 meaning that it does not contribute at all, and mark 5 meaning that it does contribute to a high degree to food safety.

		Sample		Does not contribute at all	Does not contribute	Neither - Nor	Does contribute	Highly contributes	Average mark	
All	n=	721	721	54	92	267	263	43	721	3,21
	%	100,0%	100,0%	7,5%	12,8%	37,1%	36,5%	6,0%	100,0%	
Gender	Male	50,9%		7,8%	14,9%	38,1%	34,5%	4,7%		3,13
	Female	49,1%		7,3%	10,6%	36,1%	38,6%	7,4%		3,28
	sig.hk		0,22						0,09	
Age	18 to 34	27,7%		3,8%	9,5%	43,8%	35,8%	6,9%		3,33
	35 to 54	36,9%		10,1%	9,7%	38,6%	36,5%	5,1%		3,17
	55 and +	35,5%		7,7%	18,6%	30,3%	37,1%	6,3%		3,16
	sig.hk		0,00						0,14	
Education	Elementary + Vocational	20,5%		12,1%	16,3%	43,5%	25,5%	2,6%		2,90
	Secondary	52,8%		8,0%	11,6%	38,4%	35,9%	6,0%		3,20
	Higher, university and +	26,8%		3,3%	12,4%	29,5%	46,2%	8,7%		3,45
	sig.hk		0,00						0,00	
Region	Pomurje	5,6%		5,7%	12,0%	50,1%	29,3%	2,8%		3,12
	Podravje	15,9%		6,0%	16,1%	35,3%	40,6%	1,9%		3,16
	Koroška	3,4%		18,2%	7,8%	47,6%	20,1%	6,3%		2,89
	Savinja	12,4%		7,3%	16,7%	42,8%	24,8%	8,4%		3,10
	Zasavje	2,8%		15,1%	11,4%	32,3%	29,3%	11,9%		3,11
	Posavje	3,6%		7,5%	21,3%	48,7%	19,5%	3,0%		2,89
	SE Slovenia	6,8%		0,0%	9,8%	39,2%	48,4%	2,6%		3,44
	Central Slovenia	25,9%		6,3%	11,2%	30,2%	42,0%	10,2%		3,39
	Gorenjska	9,7%		16,6%	7,1%	40,7%	33,3%	2,3%		2,98
	Primorje + Notranjska	2,5%		0,0%	20,9%	30,4%	41,5%	7,1%		3,35
	Goriško	5,6%		7,4%	13,2%	33,6%	42,0%	3,9%		3,22
	Littoral-Karst	5,7%		7,0%	10,7%	34,3%	40,6%	7,4%		3,31
	sig.hk		0,04						0,14	



# Food that is currently consumed is safer than in the past

Do you agree with the following statements as to the supply of safe food?

		Sample		I do not agree	Neither - Nor	I do agree	I do not know
All	n=	721	721	347	216	135	23
	%	100,0%	100,0%	48,1%	30,0%	18,8%	3,1%
Gender	Male	50,9%	0,00	41,6%	30,4%	22,9%	5,2%
	Female	49,1%		54,8%	29,6%	14,6%	1,0%
sig.hk							
Age	18 to 34	27,7%	0,25	46,0%	29,2%	21,0%	3,8%
	35 to 54	36,9%		53,1%	27,3%	17,9%	1,6%
	55 and +	35,5%		44,5%	33,4%	17,9%	4,2%
	sig.hk						
Education	Elementary + Vocational	20,5%	0,00	50,3%	38,4%	8,0%	3,3%
	Secondary	52,8%		45,1%	28,0%	22,9%	4,0%
	Higher, university and +	26,8%		51,9%	27,7%	19,1%	1,3%
	sig.hk						
Region	Pomurje	5,6%	0,06	47,9%	18,8%	29,2%	4,1%
	Podravje	15,9%		42,3%	31,9%	21,2%	4,6%
	Koroška	3,4%		57,1%	35,8%	5,2%	1,9%
	Savinja	12,4%		56,3%	21,3%	20,1%	2,3%
	Zasavje	2,8%		26,5%	45,5%	22,9%	5,0%
	Posavje	3,6%		63,4%	21,9%	12,4%	2,3%
	SE Slovenia	6,8%		49,1%	30,8%	19,4%	0,7%
	Central Slovenia	25,9%		48,7%	28,8%	20,7%	1,7%
	Gorenjska	9,7%		51,5%	29,1%	9,4%	9,9%
	Primorje + Notranjska	2,5%		48,5%	32,7%	18,8%	0,0%
	Goriško	5,6%		48,9%	40,4%	10,7%	0,0%
	Littoral-Karst	5,7%		30,8%	42,9%	23,5%	2,8%
	sig.hk						

# In nutrition, advantages of use of new technologies and of globalisation are higher than the risks involved

Do you agree with the following statements as to the supply of safe food?

		Sample		I do not agree	Neither - Nor	I do agree	I do not know
All	n=	721	721	125	327	201	67
	%	100,0%	100,0%	17,4%	45,4%	27,9%	9,4%
Gender	Male	50,9%	0,25	14,8%	45,7%	29,9%	9,6%
	Female	49,1%		20,1%	45,1%	25,8%	9,1%
sig.hk							
Age	18 to 34	27,7%	0,06	13,6%	45,3%	31,0%	10,1%
	35 to 54	36,9%		22,2%	46,1%	25,4%	6,2%
	55 and +	35,5%		15,3%	44,8%	27,9%	12,0%
	sig.hk						
Education	Elementary + Vocational	20,5%	0,01	21,4%	47,8%	22,6%	8,3%
	Secondary	52,8%		13,0%	47,6%	28,3%	11,0%
	Higher, university and +	26,8%		23,2%	38,8%	31,1%	6,9%
sig.hk							
Region	Pomurje	5,6%	0,28	13,2%	41,2%	25,3%	20,3%
	Podravje	15,9%		11,0%	47,7%	35,5%	5,9%
	Koroška	3,4%		15,0%	41,1%	26,0%	17,9%
	Savinja	12,4%		19,7%	51,6%	18,7%	10,0%
	Zasavje	2,8%		20,1%	54,6%	23,5%	1,7%
	Posavje	3,6%		12,4%	60,4%	17,8%	9,4%
	SE Slovenia	6,8%		14,7%	42,5%	36,2%	6,5%
	Central Slovenia	25,9%		19,4%	43,7%	28,2%	8,7%
	Gorenjska	9,7%		19,4%	46,9%	27,5%	6,2%
	Primorje + Notranjska	2,5%		34,2%	13,9%	33,0%	18,8%
	Goriško	5,6%		20,5%	47,9%	21,6%	10,0%
	Littoral-Karst	5,7%		17,9%	37,9%	31,4%	12,8%
	sig.hk						

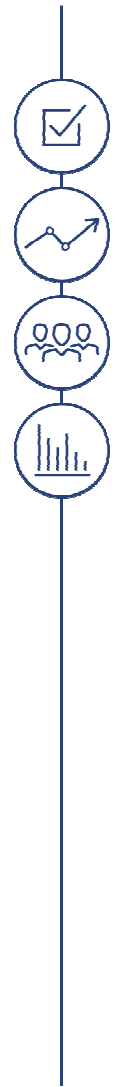
# Food produced within the European Union is safer than that imported from third countries

Do you agree with the following statements as to the supply of safe food?

		Sample		I do not agree	Neither - Nor	I do agree	I do not know
All	n=	721	721	73	202	405	40
	%	100,0%	100,0%	10,2%	28,0%	56,2%	5,6%
Gender	Male	50,9%	0,65	11,5%	28,4%	54,6%	5,5%
	Female	49,1%		8,8%	27,6%	57,8%	5,7%
sig.hk							
Age	18 to 34	27,7%	0,49	9,5%	29,1%	56,5%	5,0%
	35 to 54	36,9%		10,1%	31,3%	51,9%	6,7%
	55 and +	35,5%		10,8%	23,9%	60,4%	4,9%
	sig.hk						
Education	Elementary + Vocational	20,5%	0,06	14,6%	29,4%	53,0%	3,0%
	Secondary	52,8%		8,8%	26,4%	56,9%	7,9%
	Higher, university and +	26,8%		9,3%	30,2%	57,4%	3,1%
	sig.hk						
Region	Pomurje	5,6%	0,05	8,6%	15,6%	75,1%	0,8%
	Podravje	15,9%		6,5%	34,8%	55,7%	2,9%
	Koroška	3,4%		7,0%	25,6%	65,6%	1,9%
	Savinja	12,4%		10,7%	22,8%	62,8%	3,8%
	Zasavje	2,8%		9,1%	29,5%	49,8%	11,6%
	Posavje	3,6%		3,8%	37,1%	54,6%	4,5%
	SE Slovenia	6,8%		13,0%	29,9%	56,5%	0,7%
	Central Slovenia	25,9%		9,5%	27,7%	56,2%	6,6%
	Gorenjska	9,7%		18,8%	33,4%	38,8%	9,0%
	Primorje + Notranjska	2,5%		26,8%	17,7%	48,1%	7,4%
	Goriško	5,6%		2,5%	30,8%	53,4%	13,3%
	Littoral-Karst	5,7%		12,5%	19,6%	58,7%	9,3%
	sig.hk						

## 5.2. Questionnaire

ANNEXES



# Questionnaire

## Public opinion survey on food safety and on visibility of the European Food Safety Authority (EFSA) in Slovenia

### Question 1

Do you have confidence in the supply of safe food (do you believe that food you buy is safe)?

1. I have no confidence in it at all.
2. I have no confidence in it.
3. I neither have nor do not have confidence in it.
4. I do have confidence in it.
5. I do have full confidence in it.

### Question 2

Where do you get/find information on food safety?

### Question 3

Which foods that you consume constitute the highest health risk, in your opinion?

### Question 4

Why do you believe that such foods constitute a risk to your health?

### Question 5

Levels of concern as to food safety: Please, indicate for each of the following items, whether you are (most) concerned; neither concerned nor unconcerned, or not concerned at all about it.

	Concerned	Neither-Nor	Unconcerned
Food quality and freshness			
Food additives, as colours, preservatives, or food and/or drink flavourings			
Pesticide residues in fruits, vegetables, and cereals			
Genetically modified food (GMO)			
Food obtained through new genome editing techniques (e.g. new mutagenesis techniques)			
Cloning of animals for food products			
Nanoingredients in food			
Food obtained from insects			
Contaminants in foods, as mercury in fish			

Residues of veterinary medicinal products (antibiotics, hormones) in meat			
Food poisonings through bacteria (e.g. Salmonella in eggs)			
Allergic reactions to foods/drinks			

# Questionnaire

## Question 6

Please, indicate for each of the enumerated items, whether you would consume it, or does it constitute a possibility of better food product development in your opinion, or does it constitute a health risk and whether it is ethically acceptable.

### A. GENETICALLY MODIFIED FOOD

Genetically modified food	Yes	No	Do not know
Do you / would you consume it?			
Constitutes a possibility of new, better food product development.			
Constitutes a human health risk.			
Is ethically acceptable.			

### B. FOOD CONTAINING NANOINGREDIENTS

Food containing nanoingredients	Yes	No	Do not know
Do you / would you consume it?	1	2	3
Constitutes a possibility of new, better food product development.	1	2	3
Constitutes a human health risk.	1	2	3
Is ethically acceptable.	1	2	3

### C. FOOD OBTAINED FROM CLONED ANIMALS

Food obtained from cloned animals	Yes	No	Do not know
Do you / would you consume it?			
Constitutes a possibility of new, better food product development.	1	2	3
Constitutes a human health risk.	1	2	3
Is ethically acceptable.	1	2	3

### D. FOOD OBTAINED FROM INSECTS

Food obtained from insects	Yes	No	Do not know
----------------------------	-----	----	-------------

Do you / would you consume it?			
Constitutes a possibility of new, better food product development.	1	2	3
Constitutes a human health risk.	1	2	3
Is ethically acceptable.	1	2	3

# Questionnaire

## Question 7

Do you know or have you heard of the European Food Safety Authority (EFSA) established in 2002?

1. Yes, I do know it.
2. I have heard of it, but I do not know it.
3. I do not know it, I have never heard of it.

## Question 8

Please, evaluate with a mark between 1 and 5 each of the following sources as to how much **CONFIDENCE** you have in it, as to dissemination of information on food safety and the possible risks, with mark 1 meaning that you do not at all have any confidence in the source of information, and mark 5 meaning that you have full confidence in the source of information.

	No confidence at all	No confidence	Neither - Nor	I do have confidence	I have full confidence
CONSUMER ORGANISATIONS	1	2	3	4	5
SCIENTISTS	1	2	3	4	5
EUROPEAN FOOD SAFETY AUTHORITY	1	2	3	4	5
NATIONAL MINISTRIES AND INSPECTION SERVICES	1	2	3	4	5
MEDIA	1	2	3	4	5
FOOD INDUSTRY	1	2	3	4	5

## Question 9

Please, evaluate with a mark between 1 and 5 each of the following items as to how efficiently it contributes through its activities to food safety, with mark 1 meaning that it does not contribute at all, and mark 5 meaning that it does contribute to a high degree to food safety.

	Does not contribute at all	Does not contribute	Neither - Nor	Does contribute	Highly contributes
Activities of the European Food Safety Authority	1	2	3	4	5
Laws of the European Union on food safety	1	2	3	4	5
Activities of the Slovenian Ministries and Inspection Services	1	2	3	4	5

Activities of the Non-Governmental Organisations	1	2	3	4	5
--	---	---	---	---	---

# Questionnaire

## Question 10

Do you agree with the following statements as to the supply of safe food (I do agree; I do not agree; Neither – Nor (or, I do not know)?

	I do not agree	Neither – Nor (or, I do not know)	I do agree
Food that is currently consumed is safer than in the past.			
In nutrition, the advantages of use of new technologies and globalisation are higher than the risks involved.			
Food produced within the European Union is safer than that imported from third countries.			

## 4 demographic questions:

- Gender,
- Age (18-32; 35-54; 55 and over),
- Education (unfinished or finished elementary education; secondary education; higher education, university education or more),
- Region (12 regions).

End of document ■