

A donor partner view

Olaf Magnus Østensen



POSODOBITEV
PROSTORSKE
PODATKOVNE
INFRASTRUKTURE
ZA ZMANJŠANJE
TVEGANJ IN
POSLEDIC POPLAV



**'Modernization of spatial data
infrastructure to reduce risks and
impacts of floods'**

About the EEA Grants programme



Search eeagrants.org



[NEWS](#) | [WHO WE ARE](#) | [WHAT WE DO](#) | [WHERE WE WORK](#) | [HOW TO APPLY](#) | [PARTNERSHIPS](#) | [RESULTS & DATA](#)

[FRONTPAGE](#) > [WHAT WE DO](#)

PROGRAMME OVERVIEW

The EEA and Norway Grants 2009-2014 provide funding to 16 EU countries in Central and Southern Europe and the Baltics. There are 32 programme areas within different sectors ranging from environmental protection and climate change to civil society and research.

All countries have different needs and priorities. Each country has agreed on a set of programmes with the donor countries based on needs, priorities and the scope for bilateral cooperation.

For the EEA and Norway Grants 2014-2021, a total contribution of €2.8 billion from Iceland, Liechtenstein and Norway to 15 beneficiary countries has been agreed. The priorities for the 2014-2021 period reflect the priorities of the EU and aim to respond to the shared challenges facing Europe.

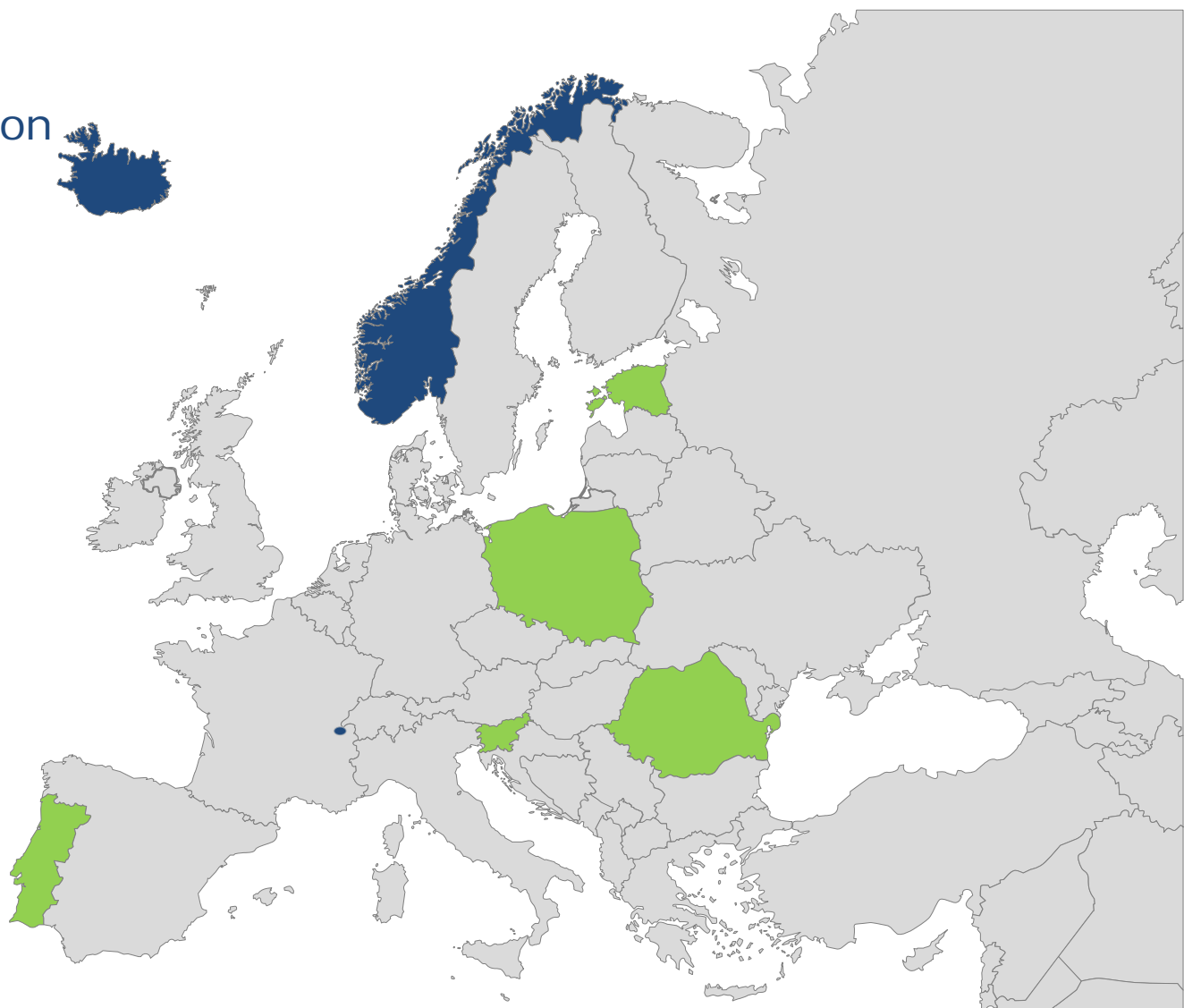
<http://eeagrants.org/>

2009-2014

Total amount € 1,8 billion

Beneficiary countries
geospatial projects:

Slovenia
Estonia
Poland
Portugal
Romania



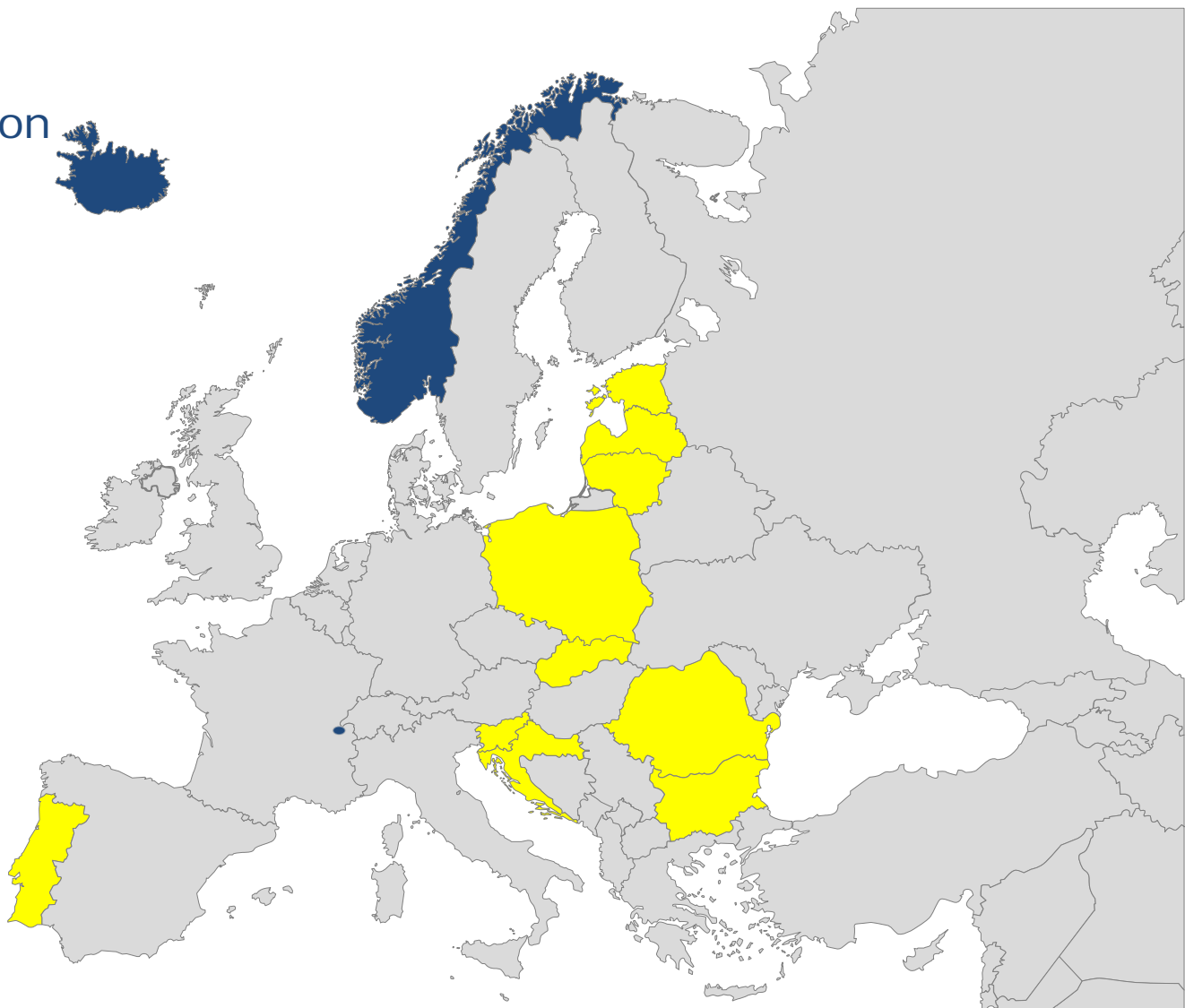
■ Possible beneficiary country
■ Donor country

2014-2021

Total amount € 2,8 billion

Beneficiary countries
geospatial projects:

Bulgaria
Croatia
Estonia
Latvia
Lithuania
Poland
Portugal
Romania
Slovakia
Slovenia



A possible new project

EEA GRANTS 2014-2021 SLOVENIA

Proposal for predefined project

1. General	Geographic information for Environment and Good Governance
1.1. Project title	4 years, 2018-2021
1.2. Project duration and period	Priority Sector (3) Environment, Energy, Climate Change and Low Carbon Economy
1.3 Relation to EEA Priority sectors and Programme areas	Programme area (11) Environment and Ecosystems Crosscutting issues: (16) Good Governance, Accountable institutions, Transparency (23) Disaster prevention (10) Local development

2. Project financing	
2.1. Grant amount applied for (EUR)	2.5 million €
2.2. Planned national co-financing (%)	17 %
2.3. Planned national co-financing (EUR)	500.000

3. Project Partners	
3.1 Project Promoter (beneficiary institution)	Surveying and Mapping Authority of Republic of Slovenia (SMA)
3.2 Project Donor Partners	A. Landmælingar Islands (LMI); project partner on professional level and member of Project Steering Committee that shall supervise the project implementation and provider of technical advice. B. Norwegian Mapping Authority (Kartverket) as Project partner on professional level and member of Project Steering Committee that shall supervise the project implementation. Partners will transfer knowledge in modern mapping, maintenance of maps and quality control of delivered products.

3.3 Previous cooperation between Project promoter and donor partners	The three partners have successfully completed the 2009-2014 EEA Grant-funded project: Modernization of spatial data infrastructure to reduce risks and impacts of floods (total 3 million EUR).
---	---

4. Background and justification	
4.1 Challenges and needs	Slovenia has not been able to finance modern and up-to-date maps. Only 20% of the territory is up to date. The situation is especially hindering spatial planning and construction of infrastructure; monitoring changes in use of land related to climate change; establishing the Spatial Data Infrastructure in accordance with the EC Directive INSPIRE.

4.2 References to relevant legislation	Law on State Geodetic Reference system (2014) Law on Spatial data Infrastructure (2010)
---	--

5. Objective and expected outcomes	
5.1 Objective of the project	Accurate and up to date topographic maps in electronic form for the whole territory of Slovenia, compliant with INSPIRE legislation. Knowledge transfer on geographic data to countries in region.

6. Risks	Generally low risk. Production is based on well known technologies and standards. The partners have worked together successfully in previous EEA projects
-----------------	---



5. Objective and expected outcomes

5.1 Objective of the project

Accurate and up to date topographic maps in electronic form for the whole territory of Slovenia, compliant with INSPIRE legislation. Knowledge transfer on geographic data to countries in region.

The project

'Modernization of spatial data infrastructure to reduce risks and impacts of floods'

- ✓ GEODETIC INFRASTRUCTURE
- ✓ TOPOGRAPHIC INFRASTRUCTURE
- ✓ HYDROGRAPHIC INFRASTRUCTURE
- ✓ INFRASTRUCTURE FOR SPATIAL INFORMATION

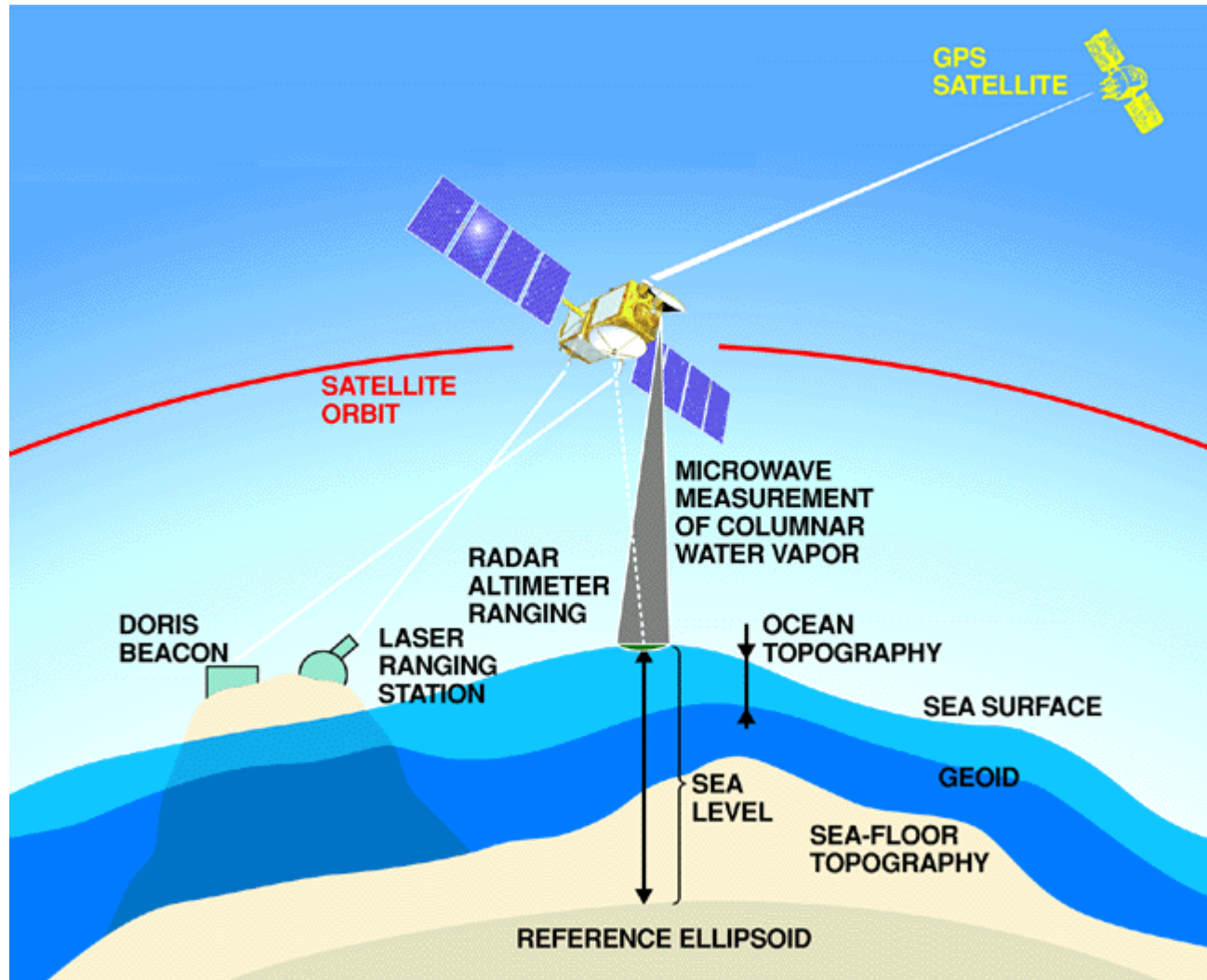


Geodesy – Monitoring the Earth



The Earth – a dynamic system

... ever changing ...



The northernmost geodetic observatory

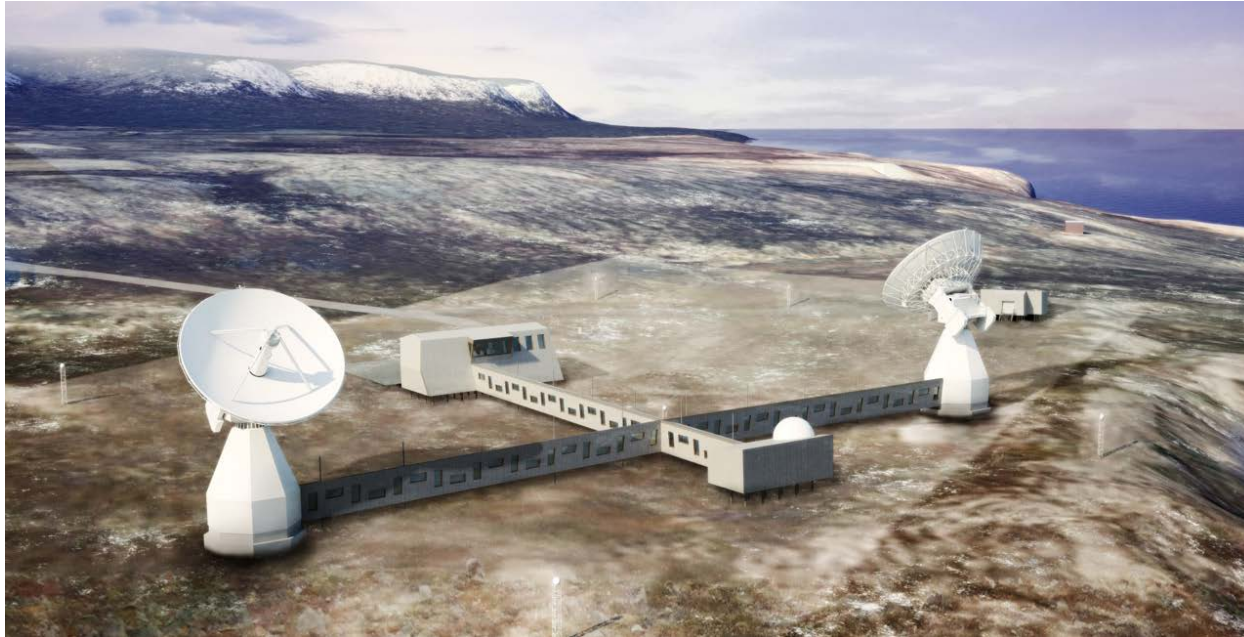


ILLUSTRATION: LPA ARKITEKTER/ RAMBØLL



UNITED NATIONS

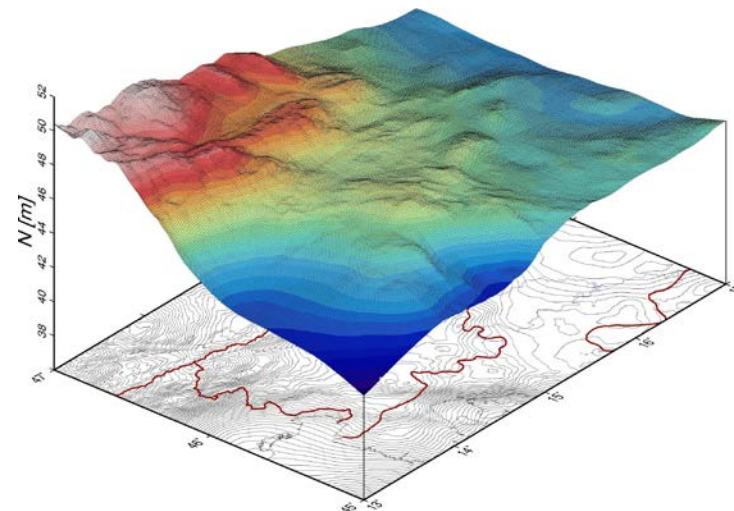
UN – the importance of geodesy



Thursday 26th of February 2015 the United Nations General Assembly adopted its first resolution recognizing the importance of a globally coordinated approach to geodesy

State-of-the-art geodetic reference frame

- ✓ We can congratulate Slovenia with a top-modern geodetic framework!
- ✓ Horizontal and vertical!

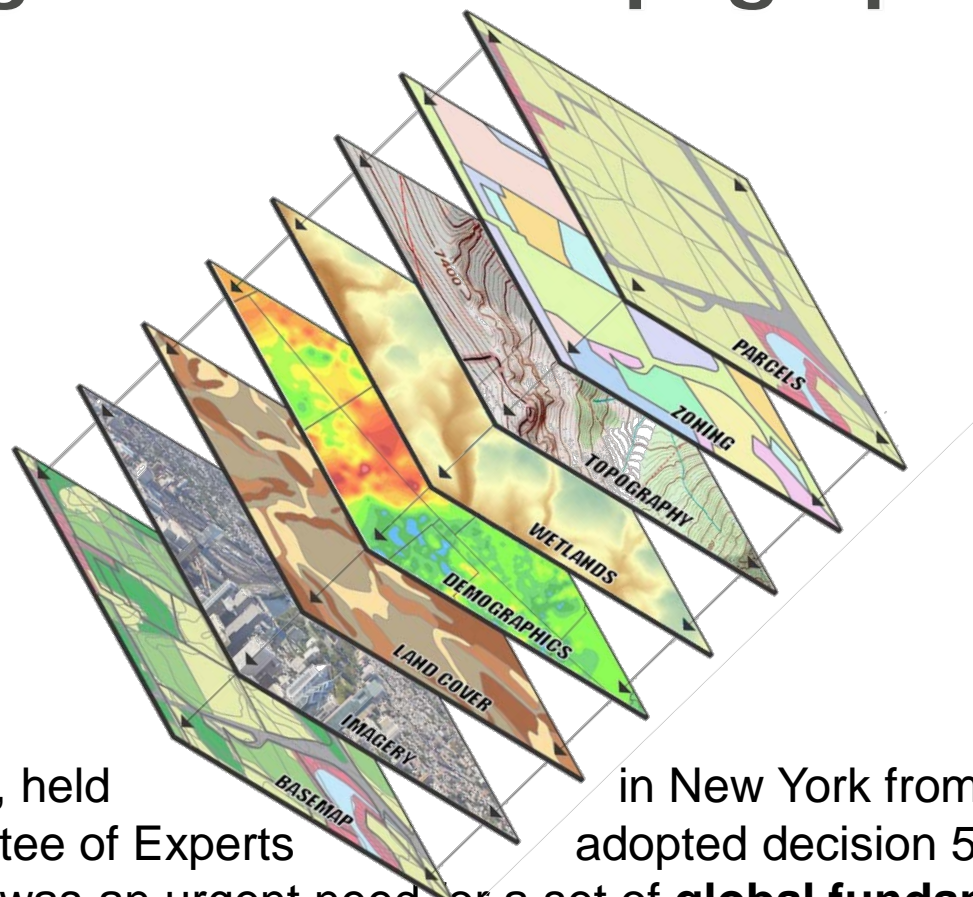




Every nation needs an authoritative, high resolution topographic dataset

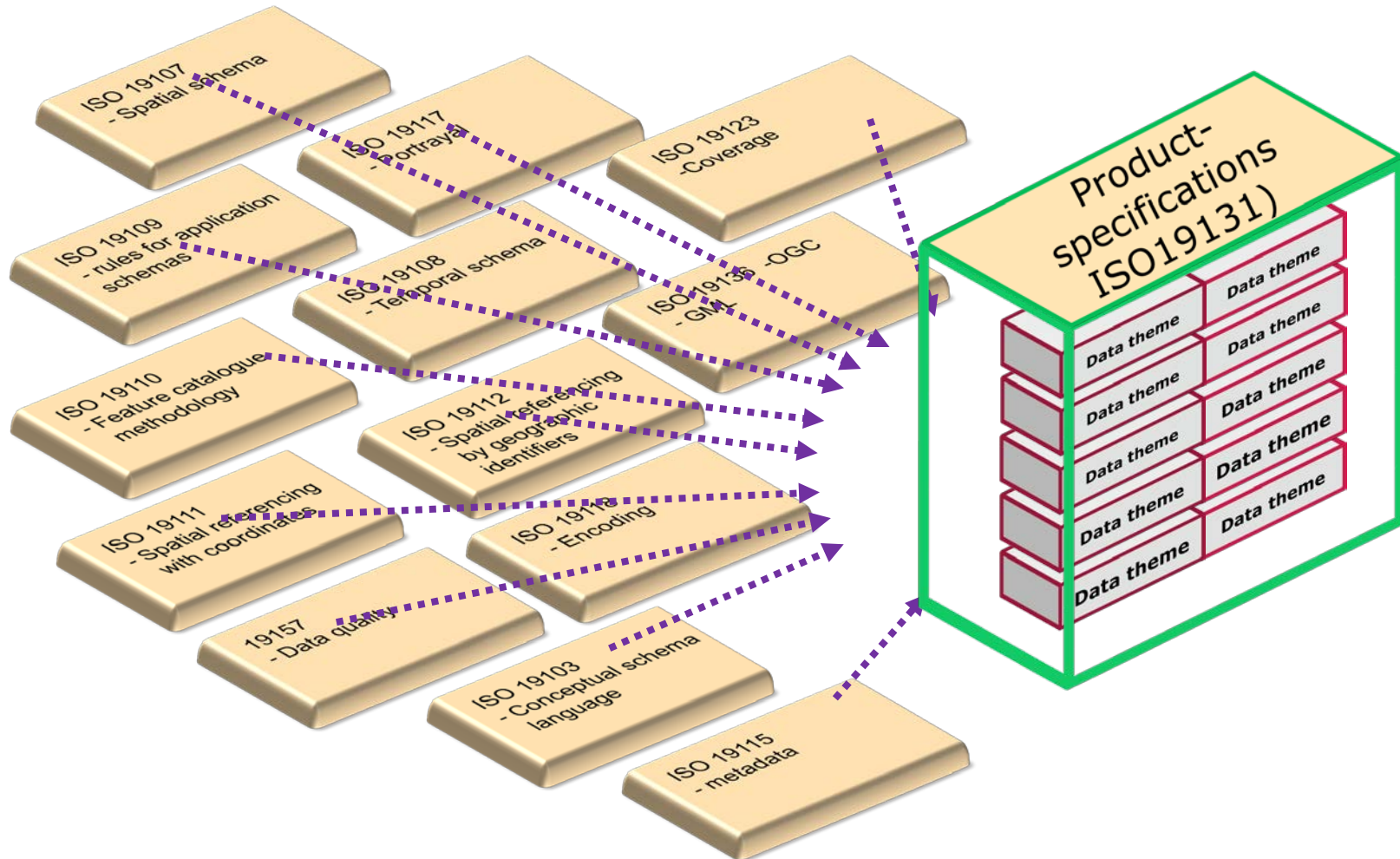


UN-GGIM
UNITED NATIONS INITIATIVE ON
GLOBAL GEOSPATIAL
INFORMATION MANAGEMENT



At its fifth session, held in New York from 5 to 7 August 2015, the Committee of Experts adopted decision 5/103, in which it agreed that there was an urgent need for a set of **global fundamental geospatial data themes** that could be harmonized in order to enable the measurement, monitoring and management of sustainable development in a consistent way over time and to facilitate evidence-based decision-making and policymaking.

State-of-the-art modelling using International Standards

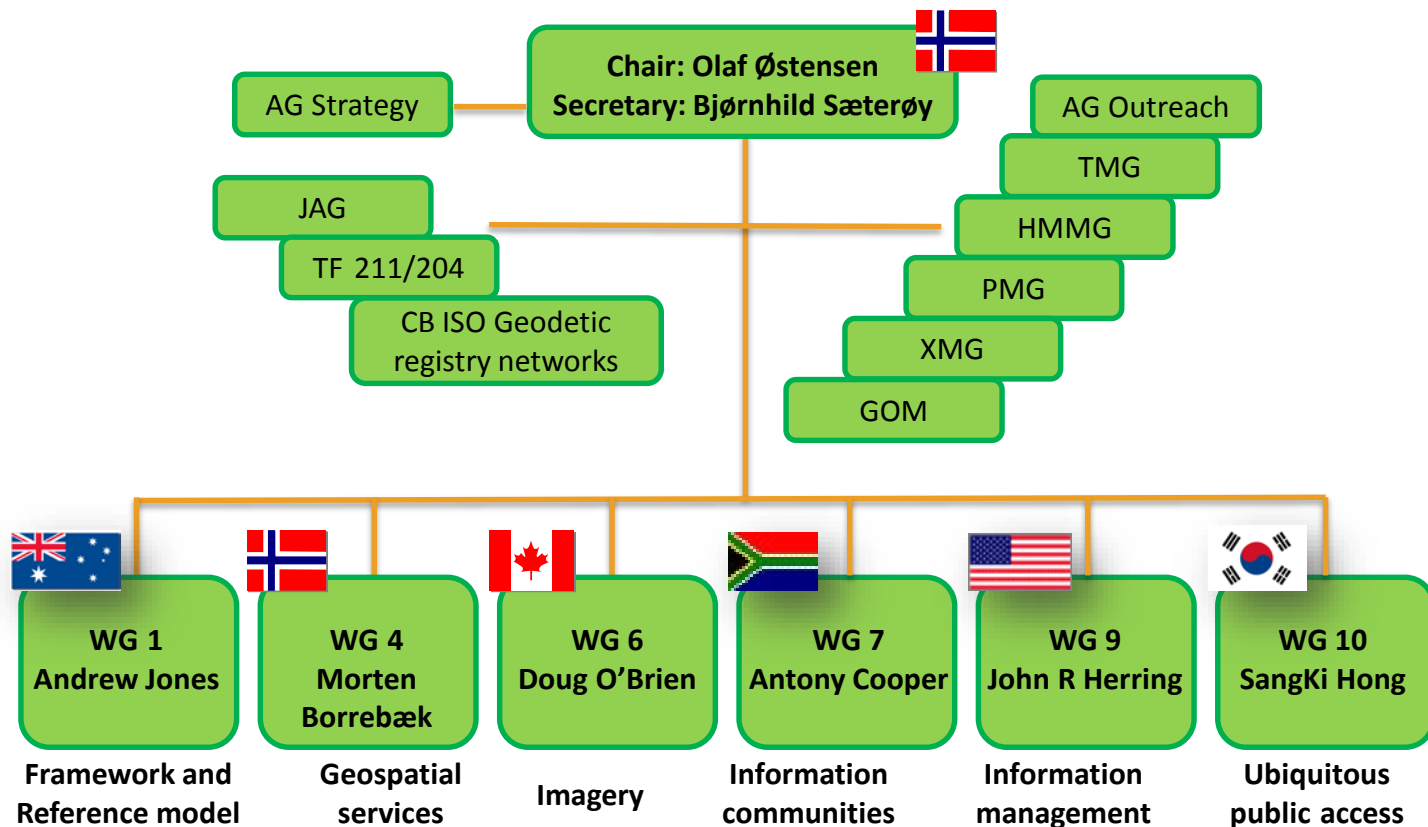


Precise data specifications – a necessity for evidence-based decisions

Long time investment in international standardisation - here, ISO/TC 211

An area where Norway has taken a lead in investment and in building competence for more than 25 years –












and we are happy to bring this to our project partners!



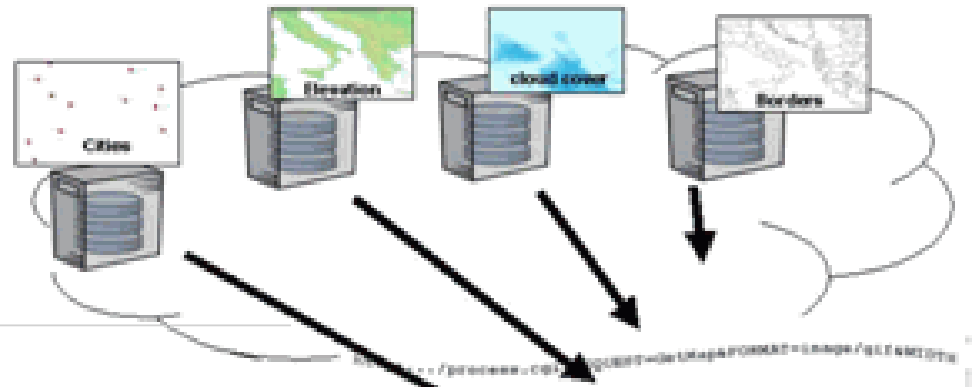
These standards are also underpinning INSPIRE!



The Slovenian themes

LAYER	INSPIRE THEME	
Building	Buildings	
High object	Buildings	
Powerline	Utility and governmental services	
Road	Transport networks	
Railway	Transport networks	
Cableway	Transport networks	
Vegetation	Land cover, Land use	
Special use area	Land use, Land cover, Hydrography	
Water area	Hydrography	
Watercourse (line)	Hydrography	
Water phenomenon	Hydrography	
Geographical names	Geographical names	
Digital elevation model	Elevation	

Data services – to put data to work



Web Feature Server



GetFeature request:

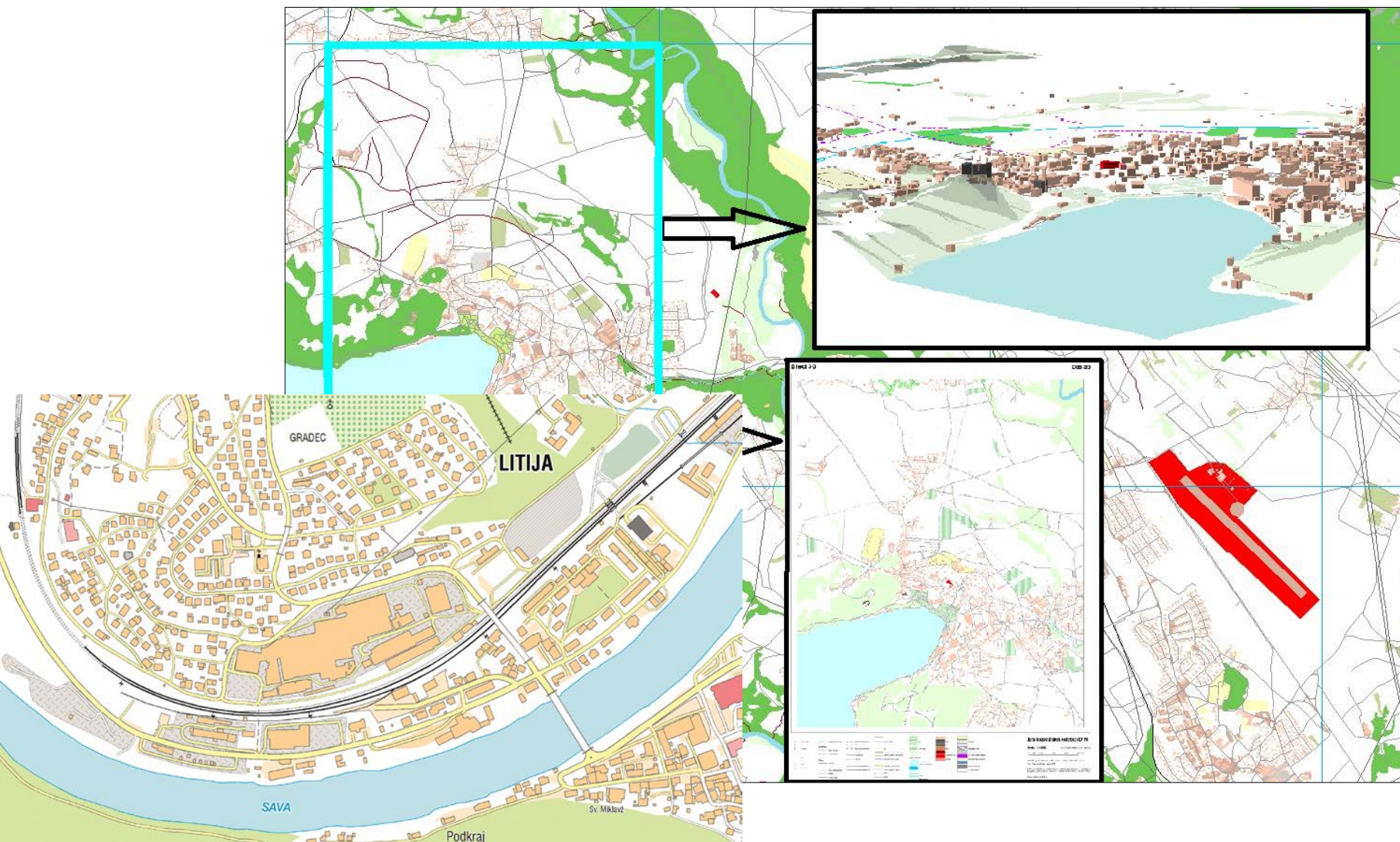
One GetMap request:



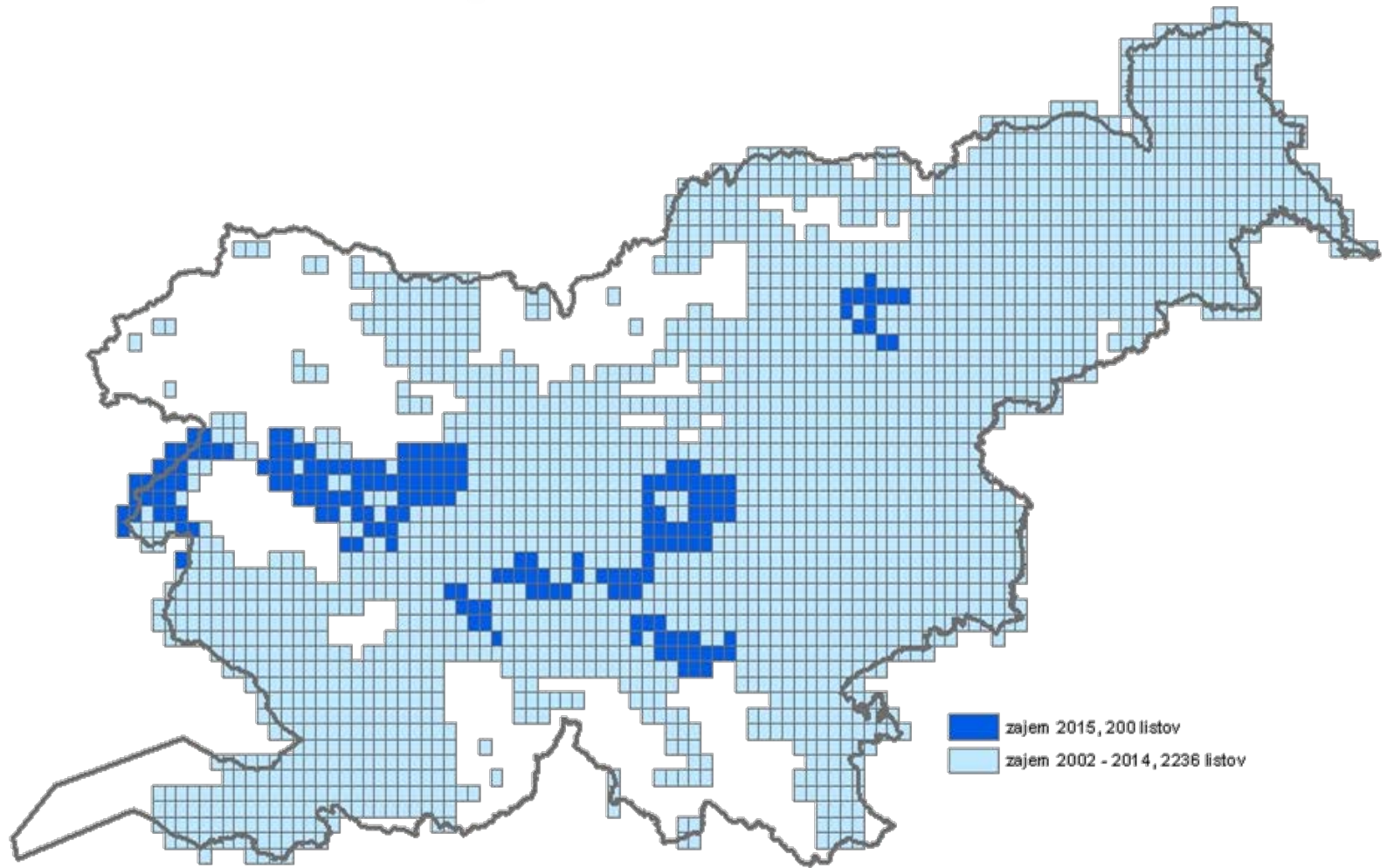
Feature & attribute data



Impressive achievements



What remains – full coverage of up-to-date information ...



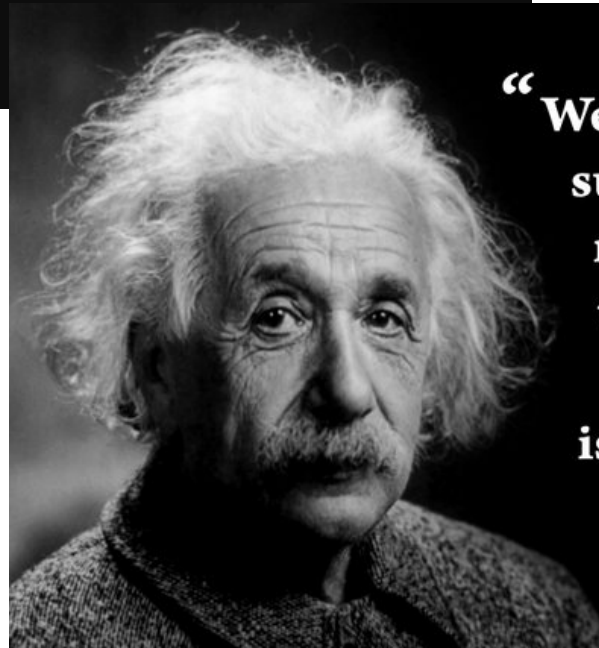
... next project!?

The climate is changing ...



Climate change does not respect border; it does not respect who you are - rich and poor, small and big. Therefore, this is what we call global challenges, which require global solidarity.

— Ban Ki-moon —



“We shall need a substantially new way of thinking if humanity is to survive.”

**Albert Einstein,
1954**

Water is a fundamental element ...



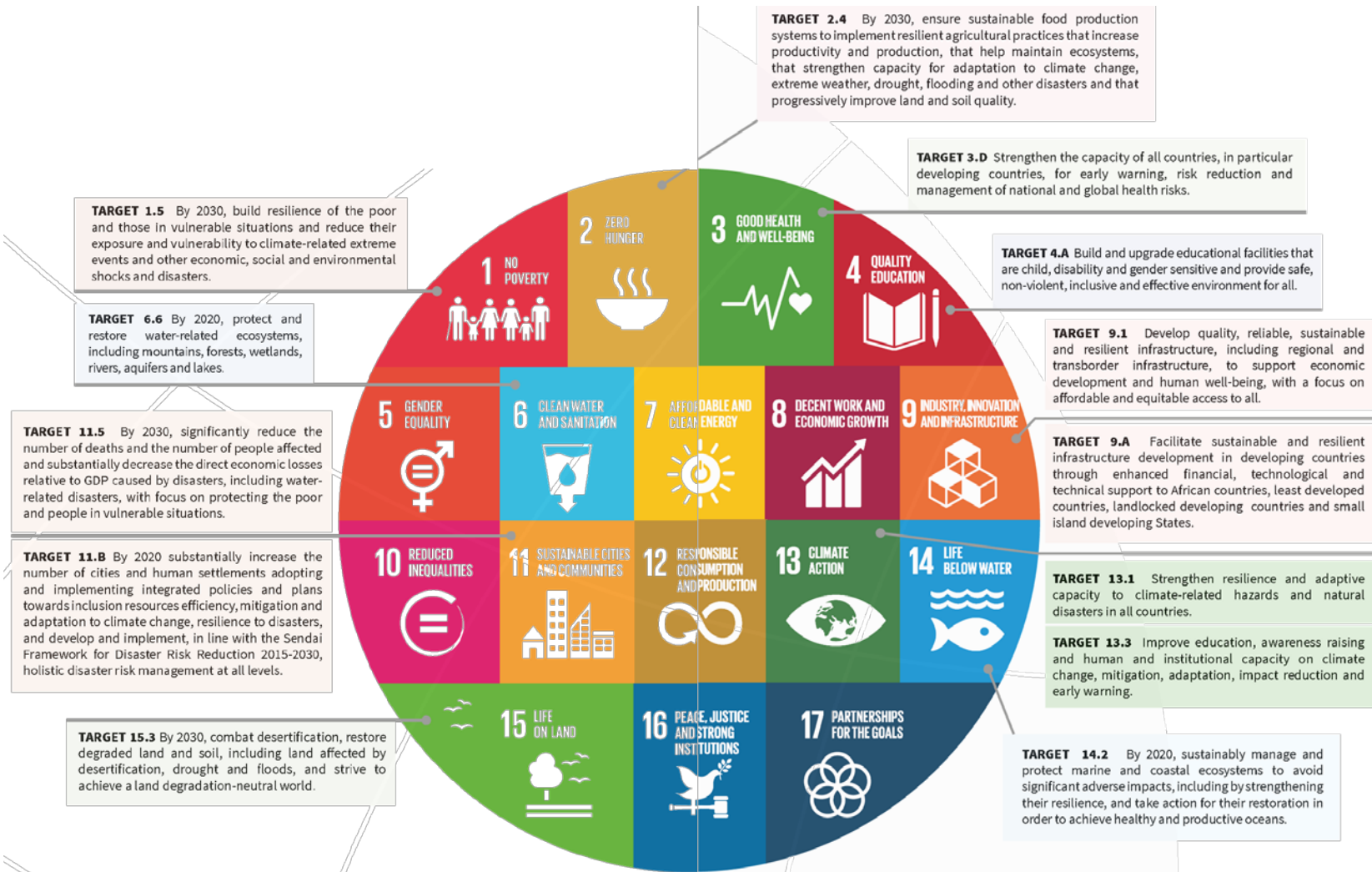
Sendai framework on disaster reduction



UNITED NATIONS



Disaster reduction fundamental to reach the Sustainable Development Goals - SDGs



A modern hydrographic database is essential for water management



The HIDRO sub-project

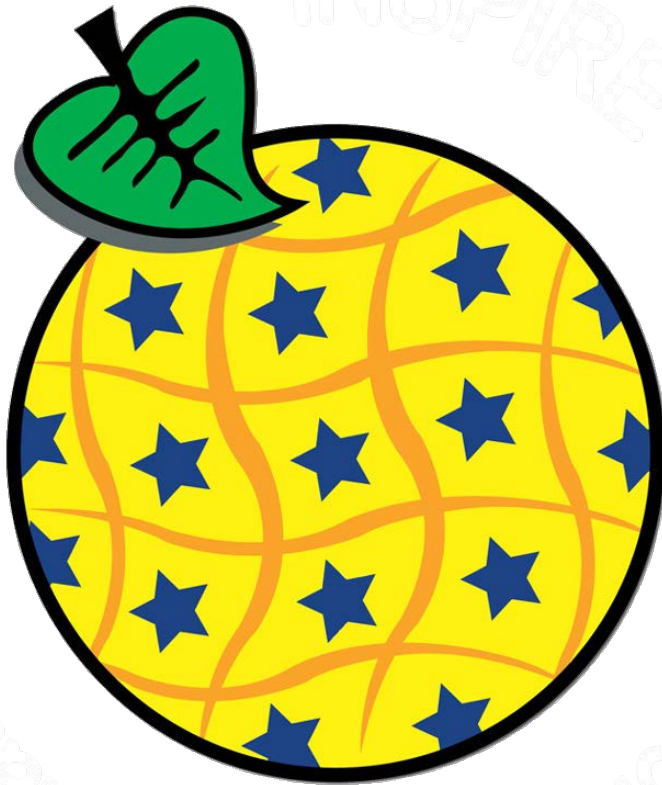
... an integrated process of water management and flood protection

New water infrastructure database



INSPIRE – an obligation for all of us!

EU- and EEA-countries



Obligations to ...

- ✓ share data
 - ✓ metadata
 - ✓ data itself
- ✓ harmonise data
 - ✓ 34 themes
- ✓ create network services
 - ✓ view services
 - ✓ download services
- ✓ Reporting on progress

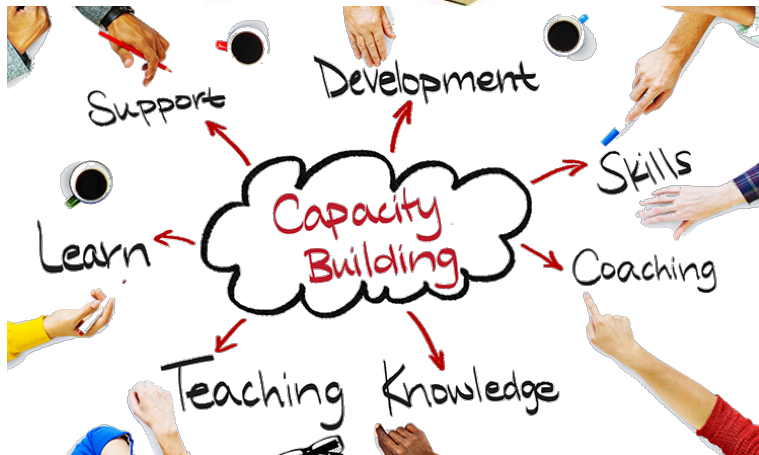
It's all about ...

✓ organising the SDI

✓ capacity building

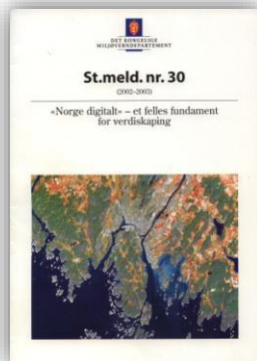
✓ competence sharing

✓ and, *actions!*



It's all about partnership and collaboration - Norway Digital

- ✓ 600 Partners
- ✓ All municipalities
- ✓ All counties – both as local and government administrations
- ✓ All national institutions with an interest in geographic information
- ✓ The Norwegian Mapping Authority - coordinator



.. and there is a bigger picture ...

The European Location Framework

- ✓ a response to the ever growing demands and expectations for highly detailed, authoritative, harmonised, cross-border geospatial information for evidence-based decisions;
- ✓ a foundation for new and innovative solutions and applications;
- ✓ enabled by, and based on, INSPIRE;
- ✓ contributing the Digital Agenda and Digital Single Market in Europe;
- ✓ contributing to a European geospatial vision and strategy!



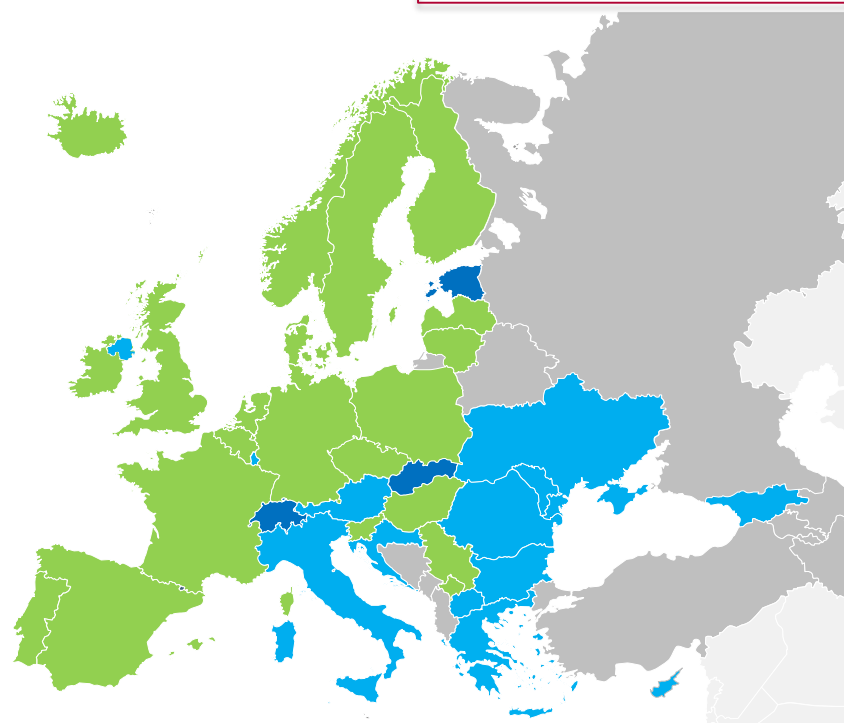
Beyond INSPIRE

ELF - The European Location Framework



	Project partner countries (19)
	Data provider (3)
	EG Global Data available

A single access point to pan-European services



... and Slovenia – SMA – an active partner!



Congratulations

with a successful project!

**We look forward to collaboration in the
2014-2021 programme!**

Thank you for your attention!

A topographic map of a rural area, likely in the UK, showing contour lines, roads, and various landmarks. Overlaid on the map are three items: a large metal pair of dividers (compass) in the upper left, a blue ruler with white markings in the center, and a circular compass with a red needle and a red string tied to its handle in the lower right. The map features labels such as 'HASSOCKS CP', 'Clayton', 'Westmeston', 'Home Bottom', and 'Lower Standean'. The ruler has markings for 0.5, 1.0, and 1.5 km. The compass has a scale from 0 to 360 degrees.