A silhouette of a person's head and shoulders in profile, facing right, looking through the eyepiece of a surveying instrument (theodolite) mounted on a tripod. The background is a bright, hazy sky, suggesting a sunrise or sunset. The entire image is framed by a thin white border.

SURVEYING and MAPPING AUTHORITY of the REPUBLIC of SLOVENIA

activity report
2015....

address from the director general

The Surveying and Mapping Authority of the Republic of Slovenia has weathered many changes in the past twenty years - organizational and methodological in nature. These changes affected the main fields of work, including the basic geodetic system, real estate registration and valuation, land administration processes and land rearrangement as well as activities regarding the ensuring of reference spatial data - basic topographic data, spatial units data, geographical names etc.

The importance and necessity of providing an official high quality spatial data infrastructure and land administration system stem from the fact that most of our decisions directly or indirectly concern shrouding space or a specific location. The availability and accessibility of official high quality spatial data provided by the Surveying and Mapping Authority, are of key importance for short, medium and long term planning of sustainable development and for efficient and effective decision making.



Anton KUPIC

Director General
Surveying and Mapping Authority
of the Republic of Slovenia

A high quality land administration system, which requires a high quality spatial data infrastructure, is a result of recognizing the wealth land and its components present for every country as it provides the space needed for living and functioning, presents an important natural resource as well as represents an important economic resource and basis for different economic activities.

In the draft document of the vision of the Surveying and Mapping Authority of the Republic of Slovenia we wrote our wish to becoming the reference organization in the field of official spatial data infrastructure and cadastral rearranging of space in the Republic of Slovenia. This will enable the sustainable development of society and position Slovenia amongst the progressive spatially aware societies, where all important decision are made on the foundation of effective services in the frame of a public spatial data infrastructure and land administration and using official and high quality spatial and real estate data.

In the activities report of the Surveying and Mapping Authority of the Republic of Slovenia for the year 2015 we tried to summarize all activities we conducted on the stated areas of work. With the gradual implementation of set tasks we strive to realize our legal obligations and in doing so wish to achieve our strategic goals in the most satisfying manner for all our users.



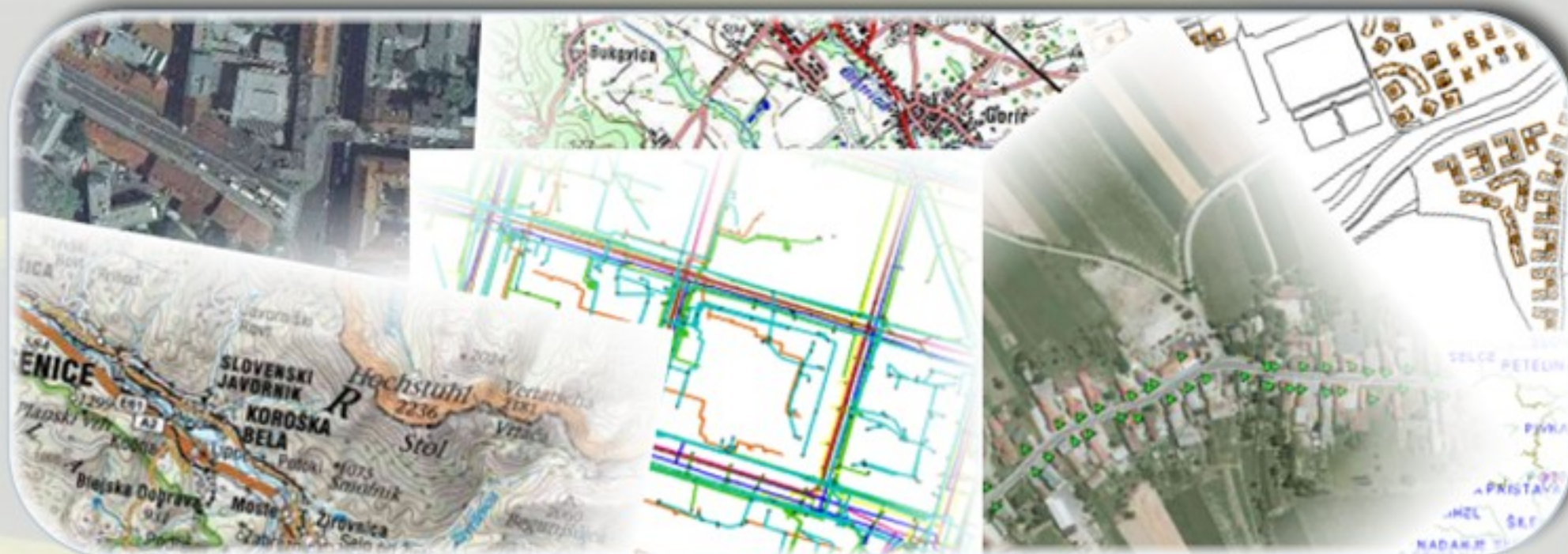


introduction

surveying and mapping authority of the republic of slovenia

identity card

The Surveying and Mapping Authority of the Republic of Slovenia is a body within the Ministry of the Environment and Spatial Planning. The competence of the Surveying and Mapping Authority of the Republic of Slovenia comprises the tasks of the national land survey service, which include the creation, management and updating of databases pertaining to the basic geodetic system, real estate, the state border, spatial units and house numbers, and the Consolidated Cadastre of Public Infrastructure, as well as the topographic and cartographic system.

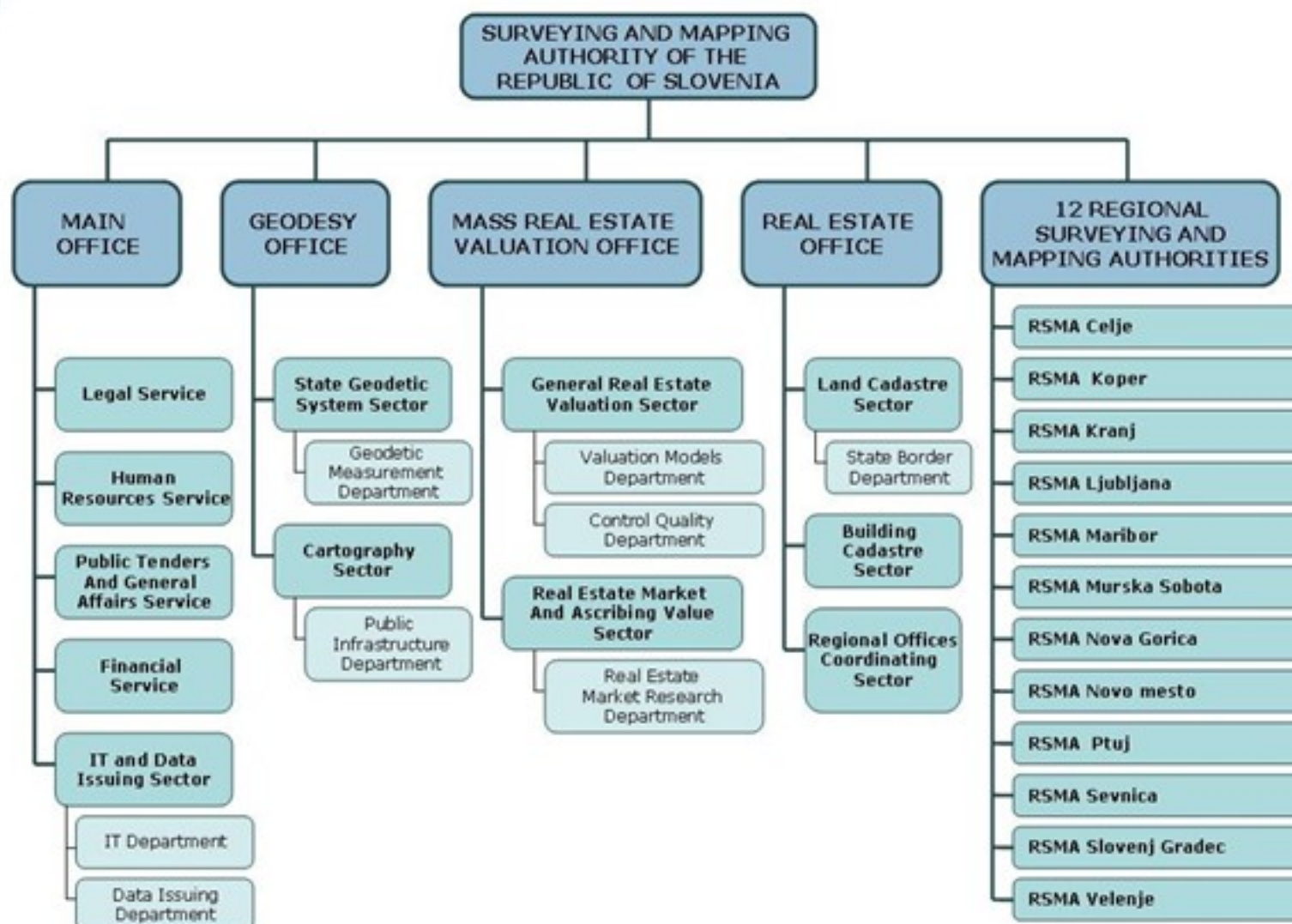


The Surveying and Mapping Authority of the Republic of Slovenia is responsible for basic data on space and real estate in the finalized databases, provides services pertaining to the registration of changes in physical space and on real estate, and performs the role of coordinator for the real estate system and spatial data infrastructure.

In cooperation with the Ministry of Finance, it is carrying out a mass real estate appraisal with the aim of creating the foundations for successful and efficient real estate management, to provide data for objective and comprehensive real estate taxation and improve the efficiency of the real estate market. It provides for the national coordinate system and its compliance with the European coordinate system and creates the conditions for implementing land surveys.

organization

The Surveying and Mapping Authority of the Republic of Slovenia comprises: the Main Office, the Real Estate Office, the Mass Real Estate Valuation Office, the Geodesy Office and twelve regional surveying and mapping authorities. The latter have been set up to streamline operations and increase the accessibility of administrative and professional tasks and services implemented by the Surveying and Mapping Authority of the Republic of Slovenia.



human resources

At the twelve regional surveying and mapping authorities and the Main Office of the Surveying and Mapping Authorities of the Republic Slovenia there a 469 employees on the 31.12.2015. The personnel structure in subject to the adopted human resources plan of the public administration and the number of employees is steadily decreasing.

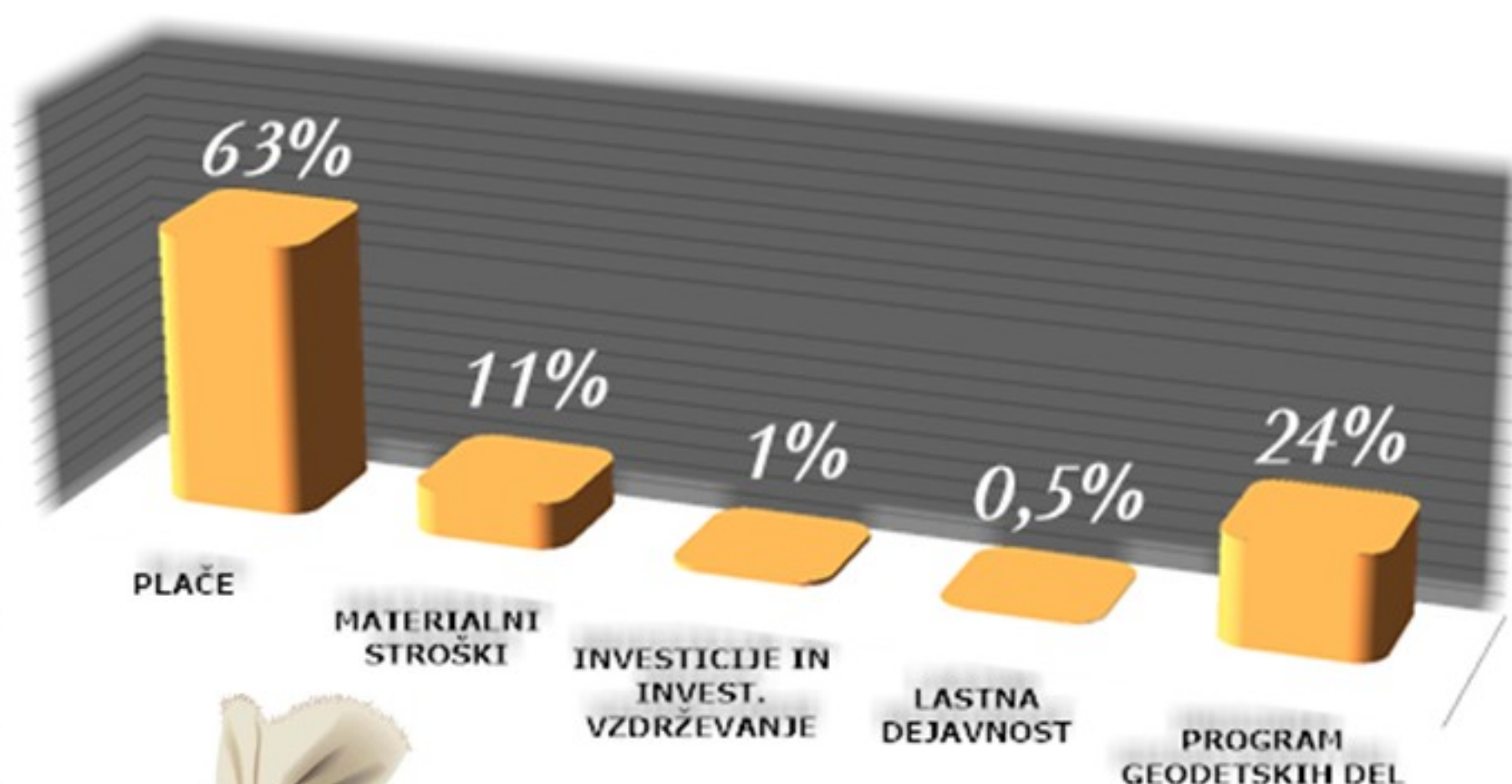
In the personnel structure the main part present surveyors with university or high professional education. In addition, the Surveying and Mapping Authority of the Republic of Slovenia employs lawyers, economists, agronomists, IT specialist and to a smaller degree administrative workers.



finance

The Surveying and Mapping Authority of the Republic of Slovenia is financed primarily from the national budget and to a lesser extent from income generated by its own activities. The surveying works program is prepared for a period of two years and is approved by the Government of the Republic of Slovenia.

Revenue generated from issuing geodetic data from the Land Cadastre, the Building Cadastre, the Real Estate Register, the state border records and the Register of Spatial Units for payment is revenue generated by our own activity.



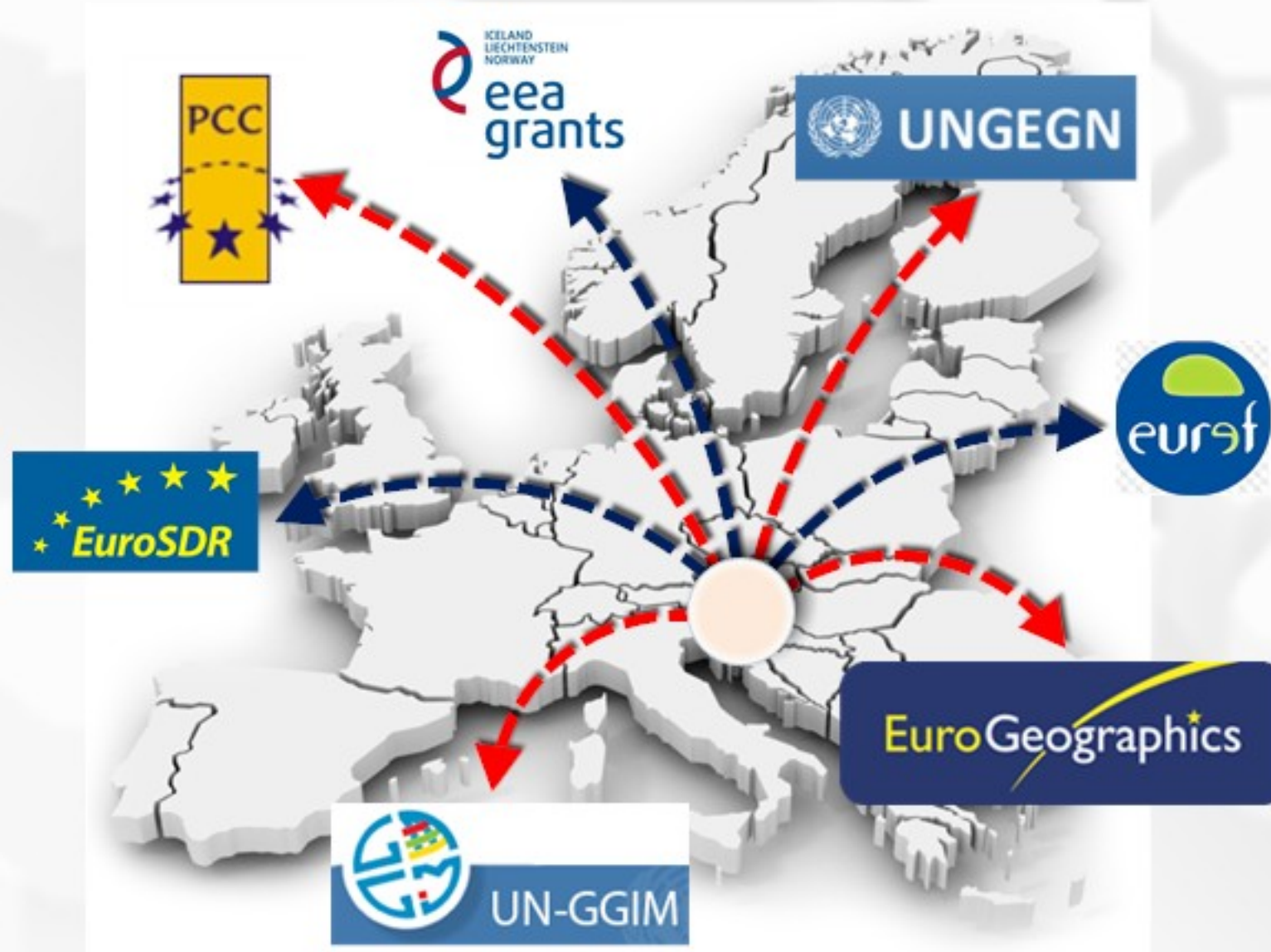
18.9 mio

budget of the SMA of the Republic of Slovenia

international activities

In accordance with the Declaration on the foreign policy of the Republic of Slovenia and the tasks outlined in the activities program of the national surveying service, the international cooperation of the Surveying and Mapping Authority of the Republic of Slovenia consists of participation in the frame of the institutions of the European Union, collaboration with neighboring countries and countries in the South-East region of Europe as well as bilateral cooperation with other countries.

In the year 2015 the Surveying and Mapping Authority of the Republic of Slovenia participated in two international projects.



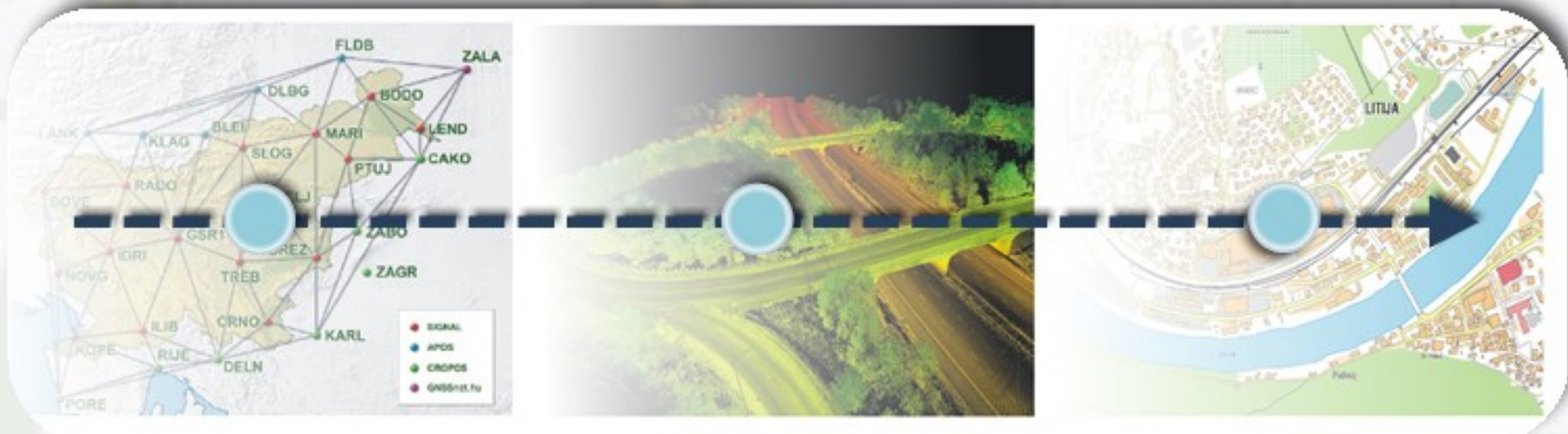
The background of the entire page is a dense, repeating pattern of various mathematical symbols and formulas. These include numbers (0-9), arithmetic operators (+, -, *, /, =), algebraic expressions (e.g., $2 > 3$, $101_2 = 5_{10}$), geometric symbols (π , $\sqrt{2}$), and infinity symbols (∞). The symbols are rendered in a light gray, semi-transparent font, creating a textured, intellectual backdrop.

activities

*of the surveying and mapping authority
of the republic of slovenia in 2015*

geodesy and topographic systems

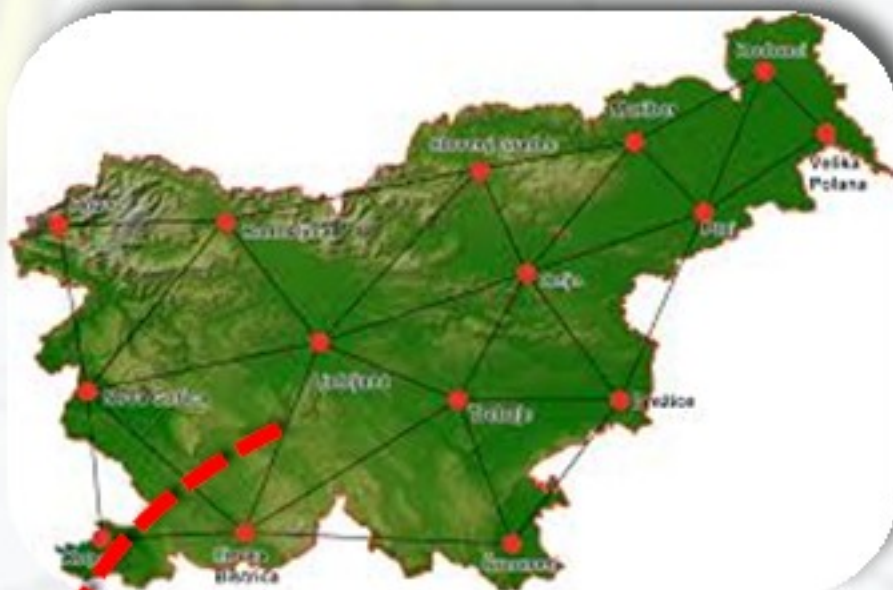
The Geodesy Office is responsible for the geodetic reference system represented by the national coordinate system and the national topographic system. In these fields, it implements legislative, professional, technical and coordination, implementation and supervisory assignments. It is responsible for establishing and updating the national coordinate system and its accessibility through the system of permanent global satellite positioning stations and other geodetic networks (the SIGNAL network). It coordinates and implements activities pertaining to the transition to the European coordinate system ETRS (European Spatial Reference System) and is responsible for linking the national coordinate system with the coordinate systems of neighboring countries. It carries out field work required to set up the horizontal and vertical (geometric and physical) components of the national coordinate system, provides transformation parameters between the existing (old) national and (new) European coordinate system and captures spatial data of the Surveying and Mapping Authority for the purpose of controlling. It manages a collection of data on geodetic points. It also implements organizational and coordination activities regarding the capture, management and integration of topographic data. It manages a collection of topographic data and the Consolidated Cadastre of Public Infrastructure. It is responsible for the national cartographic system and ensures the creation of national topographic and cartographic products for the needs of the state, ministries and local government. It provides for the compliance of the basic geo-information infrastructure with the European guidelines.



The most important permanent activities of the Geodesy Office are:

1. NATIONAL COORDINATE SYSTEM AND EXECUTION of SURVEYING MEASUREMENTS:

- operation of the grid of permanent GNSS stations - SIGNAL network
- measurement field work
- maintenance of equipment and instruments
- management and maintenance of the central geodetic points database application



*permanent
stations*



CENTRALNA BAZA GEODETSKIH TOČK

HORIZONTALNE TOČKE
VIŠINSKE TOČKE
GPS TOČKE

Iskalni pregledovalnik
Sprememba gesla
Uporabniška navodila

© GURS & © S&T 2005



The most important permanent activities of the Geodesy Office are:

2. NATIONAL TOPOGRAPHIC SYSTEM

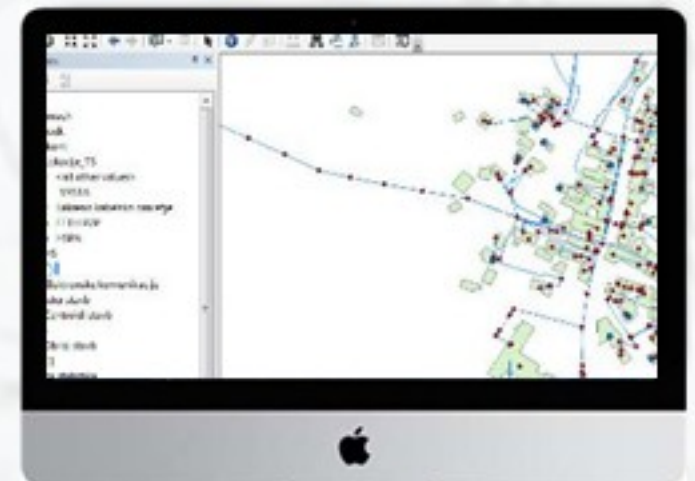
- areal imagery, orthophoto, production of digital relief model
- maintenance of military and topographic maps
- maintenance of country and transparent maps
- geographical names
- development of the topographic system of the Republic of Slovenia



The most important permanent activities of the Geodesy Office are:

3. CONSOLIDATED CADASTRE OF PUBLIC INFRASTRUCTURE

- IT support for managing the Consolidated Cadastre of Public Infrastructure
- IT support for managing the system of network connection points (OPT) and upgrading the management system of communication network data
- web based solutions for OPT network data access



INTERNATIONAL PROJECTS FROM DONATIONS OUT OF THE EEA FINANCIAL MECHANISM**PROJECT:****MODERNIZATION OF SPATIAL DATA INFRASTRUCTURE TO REDUCE RISKS AND IMPACTS OF FLOODS**

The project "Modernization of spatial data infrastructure to reduce risks and impacts of floods" has been carrying out in the years 2013-2016 with donations out of the European Economic Area Financial Mechanism of 1.7 MIO euros and regular budgetary funds of the Ministry of the Environment and Spatial Planning, the Surveying and Mapping Authority of the Republic of Slovenia and the Government Office for Development and European Cohesion Policy of 1.3 MIO euros. The concept and executed tasks of the project presents a systemic approach in preventive measures. The project is being implemented considering international professional, data and technological standards, even more so with the help of the solutions and experiences of our project partner, the Norwegian and Icelandic Surveying Authorities (Kartverket and Landmælingar Íslands). The project builds the basis for preventive planning and preventive measures or in other words reduces risks and impacts of floods.

The project consists of these subprojects:

- subproject Geodetic Reference System (GRS)
- subproject Topographic database (TOPO)
- subproject Hydrographic database (HYDRO)
- subproject INSPIRE (INSPIRE)



real estate registration

The Real Estate Office is responsible for administrative, professional, technical, coordination and supervisory activities pertaining to the management of the Land Cadastre, the Building Cadastre, the Real Estate Register and other records on real estate, the Consolidated Cadastre of Public Infrastructure. It is also engaged in managing the Register of Spatial Units and the Register of House Numbers. It operates in an interagency capacity in the work of international commissions and in other activities and projects, and is responsible for the training and education of employees of the regional surveying and mapping authorities. It prepares subject matter and material for the mandatory training of geodesists with a geodetic permit in cooperation with the Slovenian Chamber of Engineers. The substantive management and coordination of the work of regional surveying and mapping authorities in the field of real estate is another of its tasks.



*land
cadastre*

*building
cadastre*



*real estate
register*



The most important permanent activities of the Real Estate Office are:

1. NATIONAL BORDER SURVEYING ACTIVITIES

- maintenance work on the national borders with Austria, Italy and Hungary
- meetings of transnational commissions for national border
- periodic control of border signs
- control of GPS-RTK measurements
- professional, geoinformational, cartographic and geodetic support to the Ministry of Foreign Affairs in resolving border issue



The most important permanent activities of the Real Estate Office are:

2. MANAGEMENT AND MAINTENANCE OF REAL ESTATE DATABASES:

- IT support for managing real estate databases
- improvements to real estate data

IT OVERHAUL OF REAL ESTATE DATABASES

- preparation of documentation for public tenders for the IT overhaul of real estate databases
- development supervision over the application solution for the graphical part of the Land Cadastre
- graphical Land Cadastre data analysis on the central level
- preparation of the ZKN graphical layer with Land Cadastre points with corresponding accuracy levels
- realization of automatic building classification
- preparation of test migration of graphical Land Cadastre data into the new data model
- control, improvement and verification of the triangular transformation model

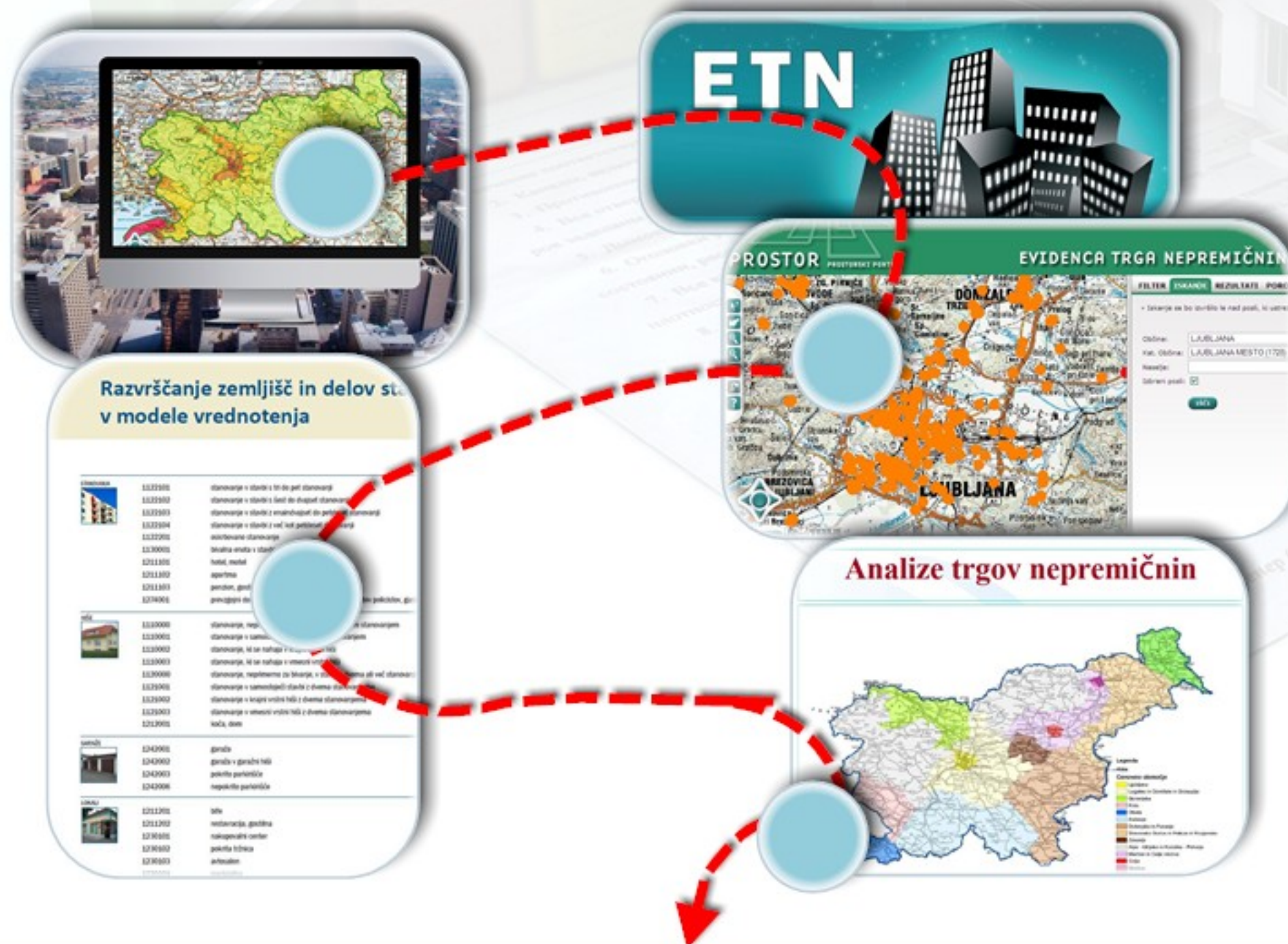


mass real estate valuation

The Mass Real Estate Valuation Office implements the tasks of general real estate valuation and the tasks of ascribing value to real estate properties. The main tasks comprise the preparation of real estate valuation models, determination of real estate value indices and monitoring of the Slovenian real estate market. The main products are valuation models for individual types of real estate that, on the basis of data from the Real Estate Register, provide for the calculation of the market value of real estate, calculated indices of the value of real estate that enable updating of market values with regard to price trends in the real estate market during the period between general valuations of real estate and periodic reports on developments in the market based on systematic monitoring and analysis of data on the market. The Office manages and maintains the Real Estate Market Record, which is a multi-purpose public database on purchases and rental agreements pertaining to real estate. The Real Estate Market Record is managed in order to provide data on realized prices and rents in the real estate market for the purposes of mass valuation and other public purposes determined by law. On account of the changes in real estate markets, the Office verifies individual real estate valuation models at least every four years. The Office manages and updates the Real Estate Valuation Database, which is a public database on real estate valuation models and data on value indices. The Office provides for the procedure of ascribing values, whereby the values of all recorded real estate are calculated on the basis of data on real estate entered in the Real Estate Register by using the mass valuation model for calculation of generalized market value, and enters the calculated values into the Real Estate Register.



1. UPGRADING AND MAINTAINING WORK ON THE INFORMATION SYSTEM FOR GENERAL VALUATION
2. DEVELOPMENT OF APPLICATIONS, FORMS AND DOCUMENTS FOR THE MASS REAL ESTATE VALUATION SYSTEM
3. PREPARATION WORK FOR THE NEW CYCLE OF GENERAL VALUATION
4. EXECUTION OF PROFESSIONAL AND TECHNICAL TASKS FOR MAS REAL ESTATE VALUATION
5. REAL ESTATE VALUATION DATASET
6. MAINTENANCE OF THE REAL ESTATE VALUE DETERMINATION APPLICATION
7. OVERHAUL AND MAINTENANCE OF THE REAL ESTATE MARKET REGISTER (ETN)



spatial data infrastructure

1. IMPLEMENTATION OF THE INSPIRE DIRECTIVE

In 2015 the Surveying and Mapping Authority of the Republic of Slovenia continued with the implementation of activities for the establishment of a common spatial data infrastructure as is defined in the Infrastructure for Spatial information Act - ZIPI. The tasks of establishing network services, ensuring interoperability of datasets, the maintenance of the Slovene INSPIRE geoportal and the Metadata system were realized in the scope of the subproject INSPIRE of the "Modernization of spatial data infrastructure to reduce risks and impacts of floods" project, which was defined in the Memorandum of Understanding on the implementation of the EEA Financial Mechanism 2009-2014.

In 2015 the Surveying and Mapping Authority of the Republic of Slovenia organized the First Slovene INSPIRE conference with international participation. The main theme of the conference was **NETWORK SERVICES** and the contributing presenters showed best practices from different European countries as well as realized Slovene projects, which sowed a high level of implementation of the demanding INSPIRE Directive.



